

Figure 1. 3D reconstruction of VGLUT-Fab complex from combined datasets collected on Talos Arctica. Current structure shows all transmembrane helices clearly but with distortions in many areas in the map (A). Map refined with cisTEM shows that particles in this dataset adopt preferred top-views (B) with a global resolution ~ 4.2 Å (C).

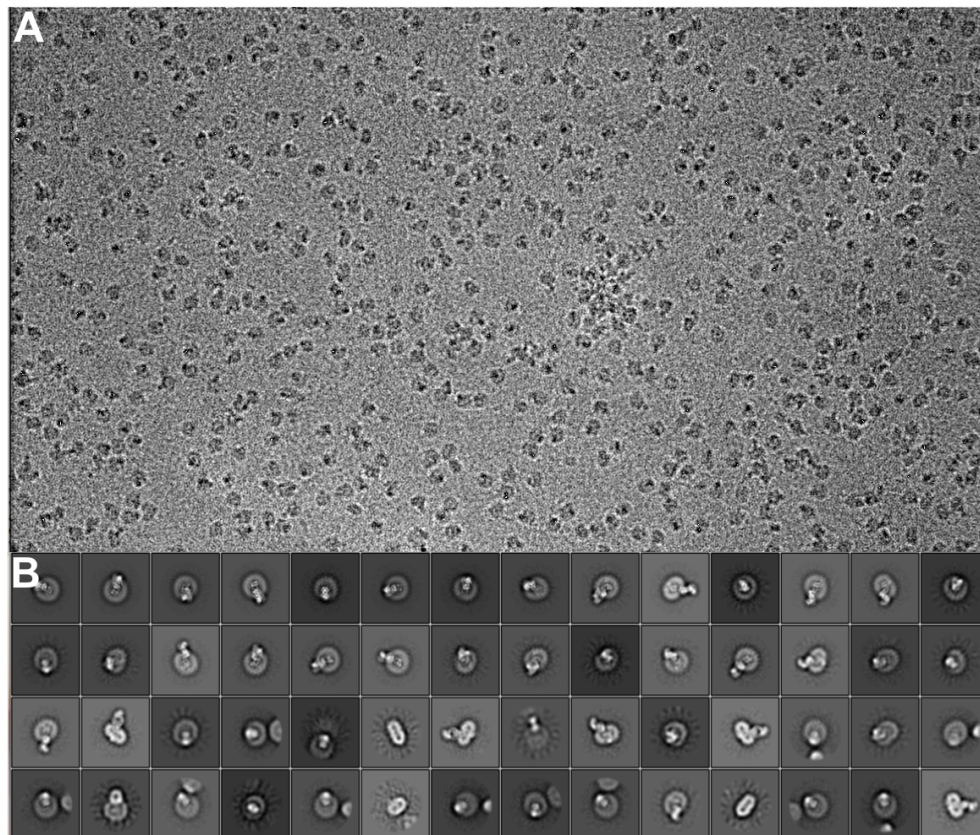


Figure 2. Representative micrographs and 2D classification. (A) VGLUT-Fab complex homogeneously distributed in vitrified ice. (B) 2D classification result shows that most particles adopt top-views.