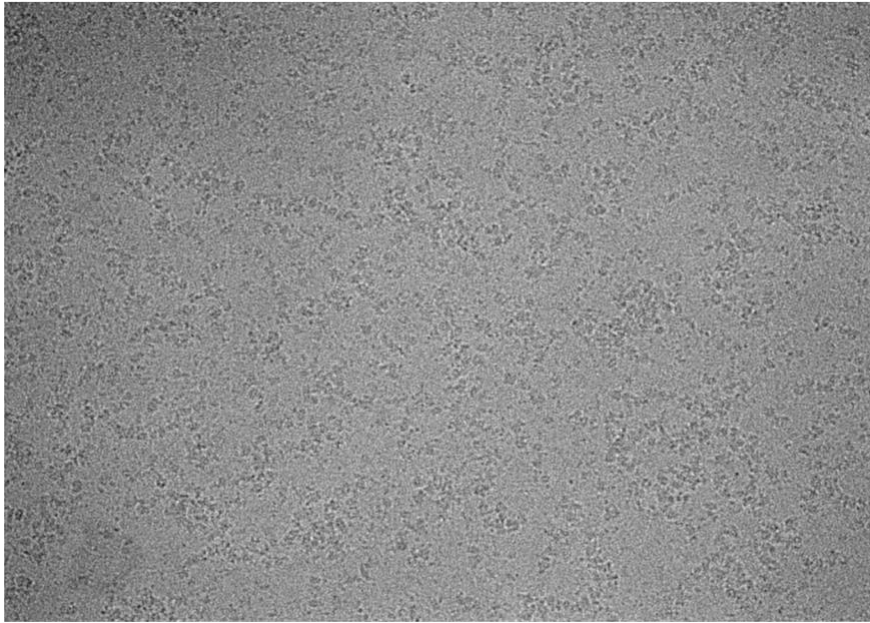
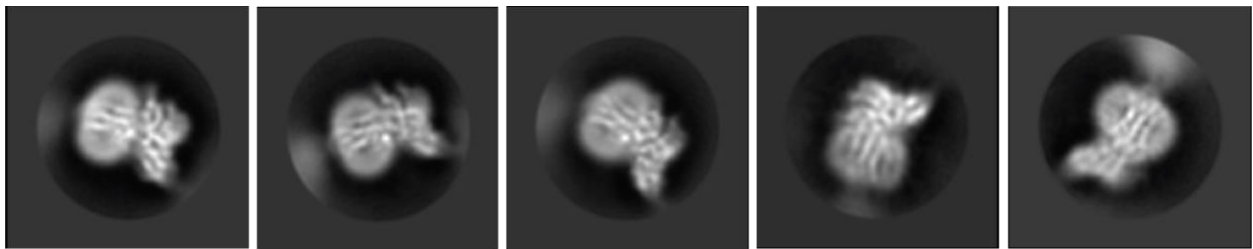


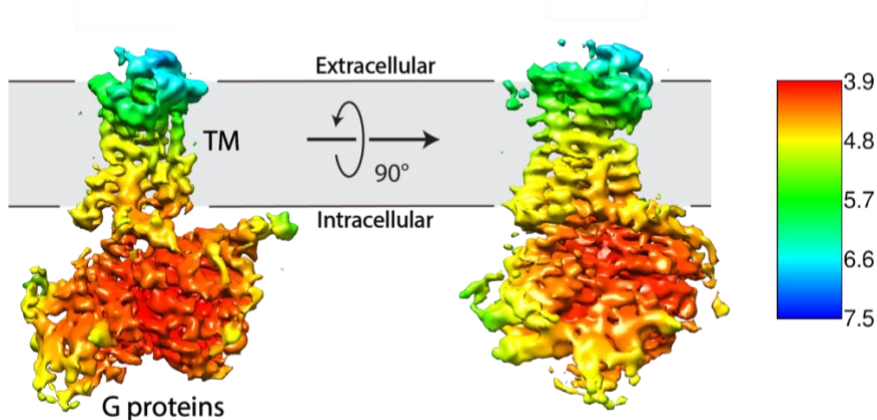
**NCCAT GUP2 Proposal Supplementary Information**  
Sarah Erlandson



Representative micrograph collected on a Titan Krios microscope with a K3 detector. The particles show some slight aggregation behavior in the ice.



2D class averages calculated from a Titan Krios dataset. The class averages show secondary structure, but because they only contained a subset of views of the complex, a good 3D reconstruction could not be obtained.



A dataset collected on a Talos Arctica microscope resulted in slightly less preferred orientation and resulted in a 3D reconstruction at 4.2 Å. However, distortions of the TM helices are visible in the cryo-EM map due to the poor angular distribution of particles.