

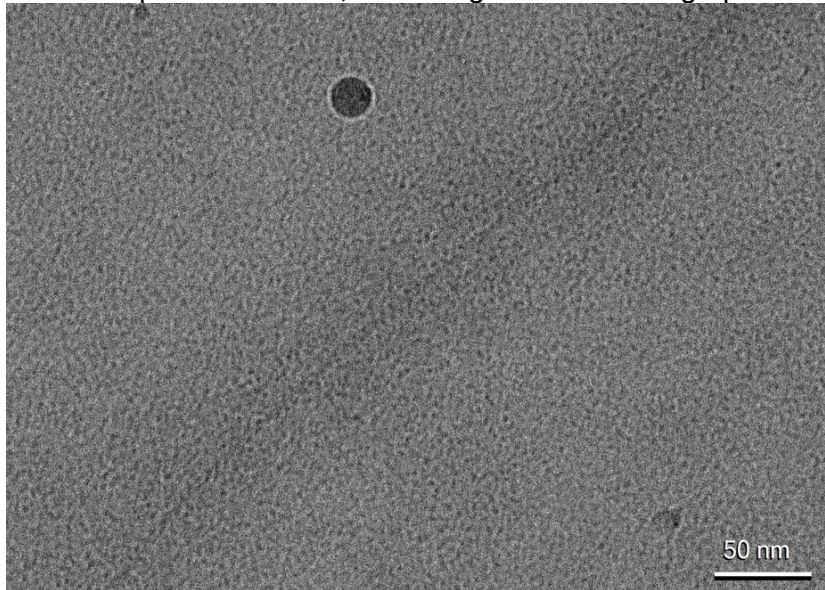
Supplementary Information *

Please provide a representative low mag, high mag image, and any processing on the samples to be submitted for this proposal. Keep this supplemental to no more than 2 pages of data and figures for supporting material in pdf format. All attachments should be in pdf format, ideally with a combined size no larger than 10 Mb.

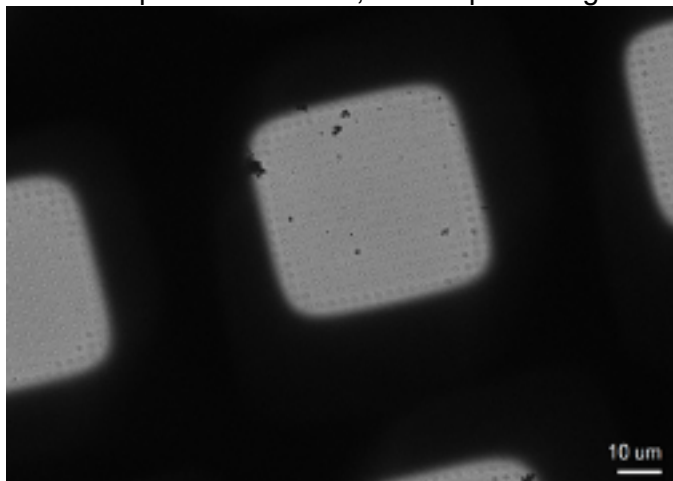
We have 5 samples: (1) the talin1 actin-binding domain 1 bound to F-actin, (2) the alpha-catenin dimerization domain (residues 22-263), (3) the integrin ectodomain bound to the receptor binding domain of the spike protein, and the dystrophin (4) 1 and (5) 2 actin binding domains bound to F-actin.

(1) the talin1 actin-binding domain 1 bound to F-actin

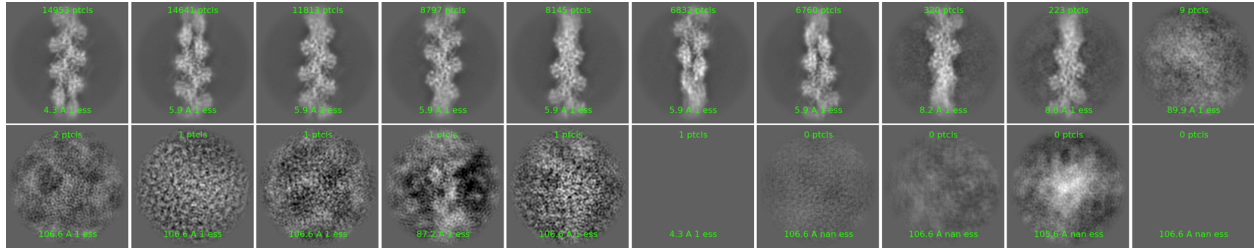
1.1. Representative 60,000 x magnification micrograph:



1.2. Representative 200,000 x square magnification image:

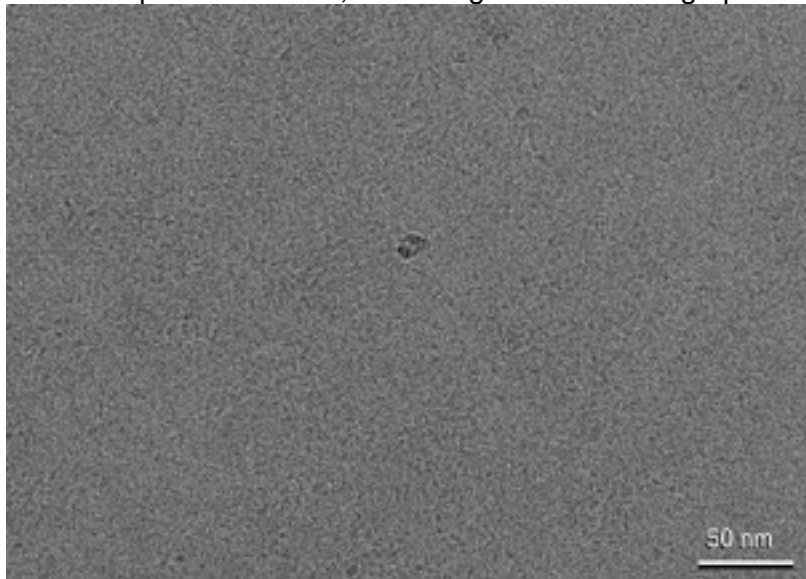


1.3. Preliminary 2D classes:

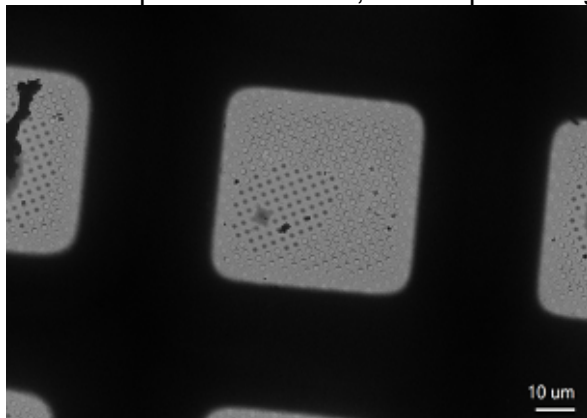


(2) the alpha-catenin dimerization domain (residues 22-263)

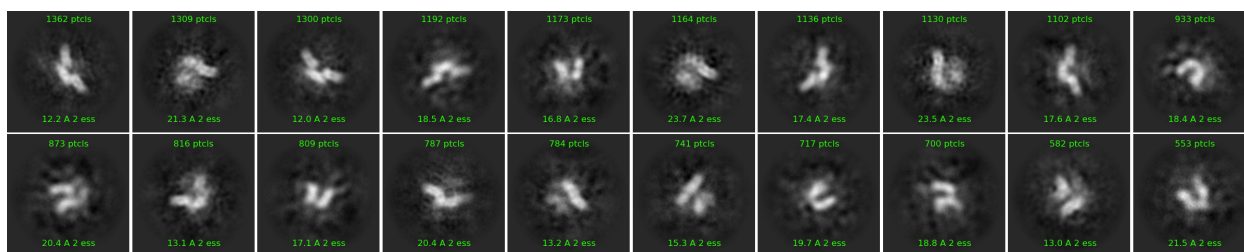
2.1. Representative 60,000 x magnification micrograph:



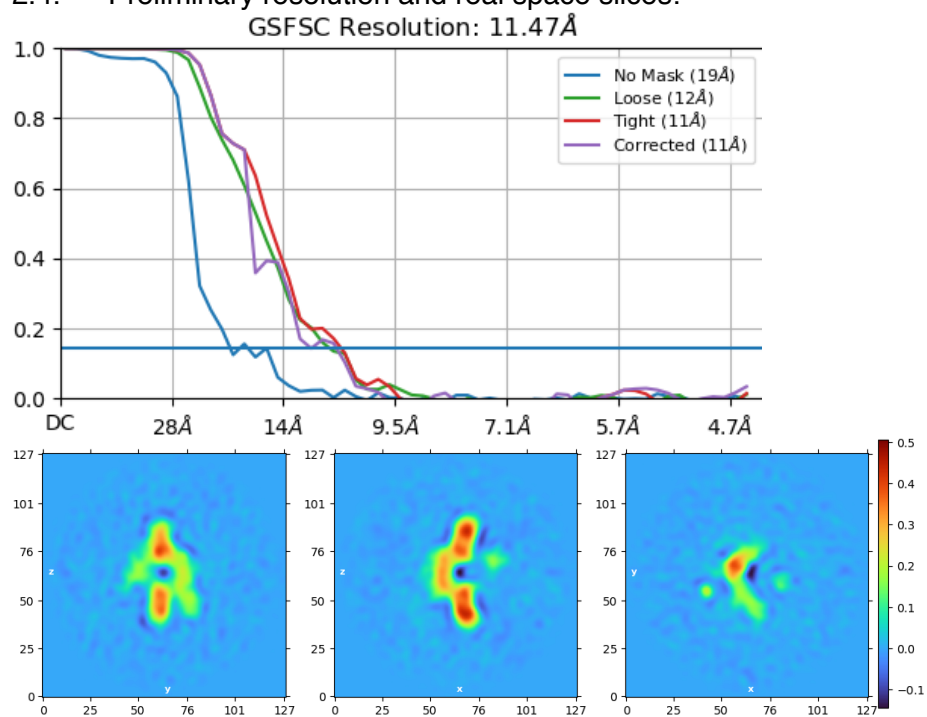
2.2. Representative 200,000 x square magnification image:



2.3. Preliminary 2D classes:

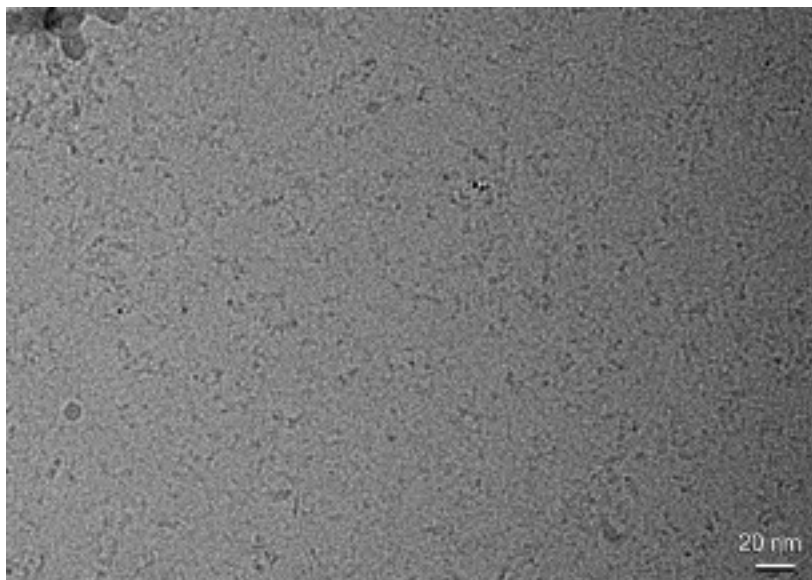


2.4. Preliminary resolution and real space slices:

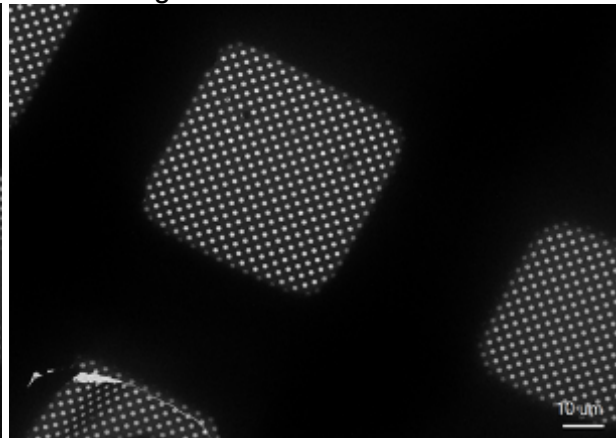
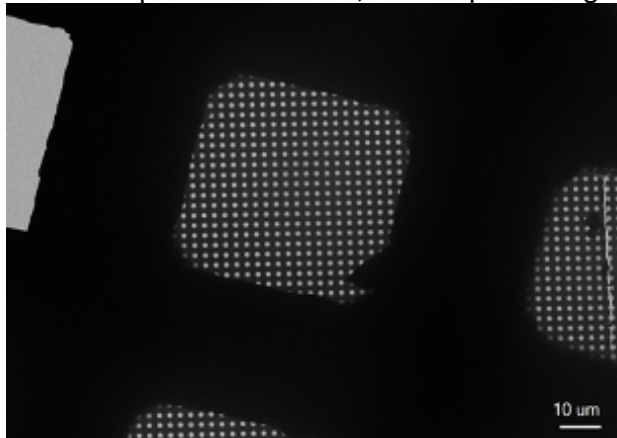


(3) the integrin ectodomain bound to the receptor binding domain of the spike protein

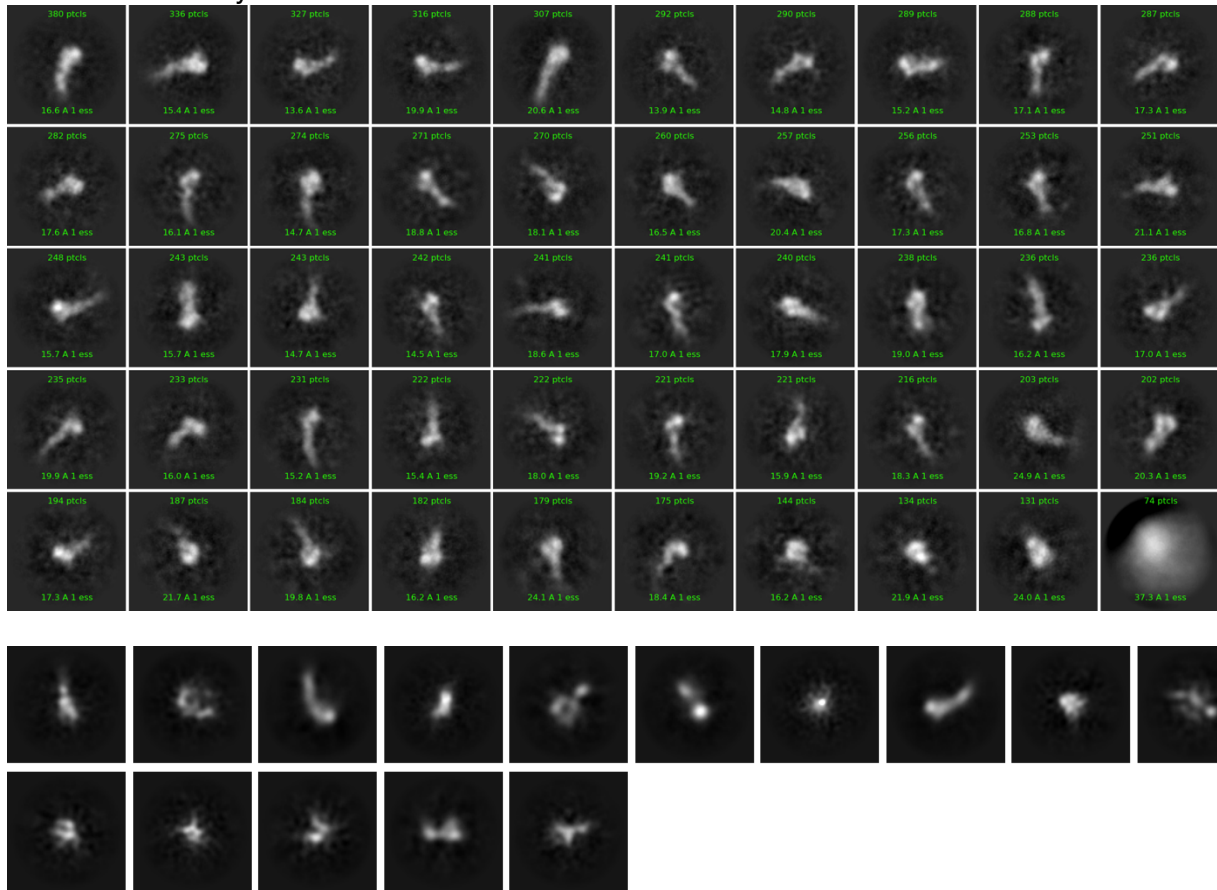
3.1. Representative 60,000 x magnification micrograph:



3.2. Representative 200,000 x square magnification image:



3.3. Preliminary 2D classes:



(4) the dystrophin 1 and 2 actin binding domains bound to F-actin

4.1. actin co-sedimentation of dystrophin

