

Fig. 1 Representative reference-free 2D class averages for top and side views of mHsp60. The data were collected at IU EMC (without tilts) using Talos Arctica with 1.128 Å/pixel.

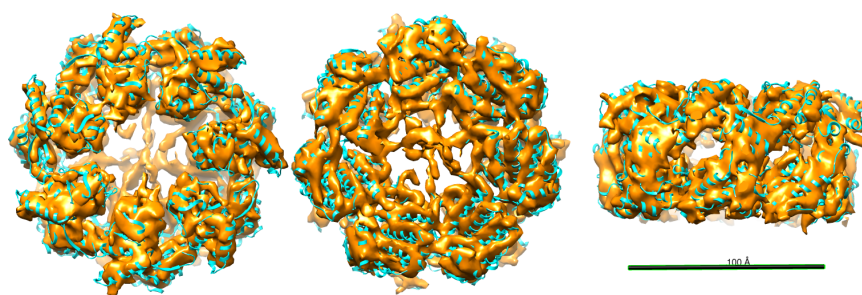


Fig. 2 Cryo-EM model of mHsp60 heptamer. The mHsp60 model was superimposed with one GroEL ring in cyan ribbons. The model was refined at 7 Å without imposing 7-fold symmetry. Left to right, top, bottom and side views of mHsp60.