

Figure 1 Initial CryoEM analysis of Rad52-rad51 complex with data collected NCCAT. A) Depicted here are representative 2D Classes of Rad52-Rad51 complex B) Maps of three volumes of Rad52-Rad51 complex showing different conformational states. Grey (12083), yellow (14627) and cyan (9032) volumes have very low number of particles. Collecting more data might improve the resolution of these volumes.

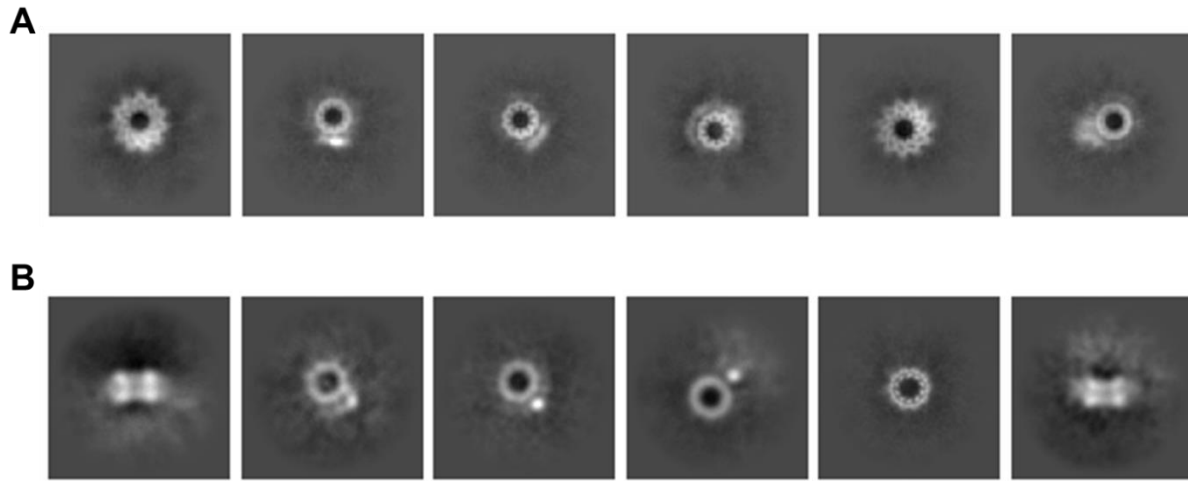


Figure 2 A) Preliminary analysis of Rad52-Rad51-DNA complex with cryoEM data collected at NCCAT. Depicted here are representative 2D Classes of Rad52-Rad51-DNA complex. We have not observed side views in this dataset during the preliminary analysis B) Preliminary analysis of Rad52^{ΔC}-Rad51 complex with cryoEM data collected at Washington University at St. Louis Center for Cellular Imaging (WUCCI). Though we see side views the data is not enough to reach high resolution.