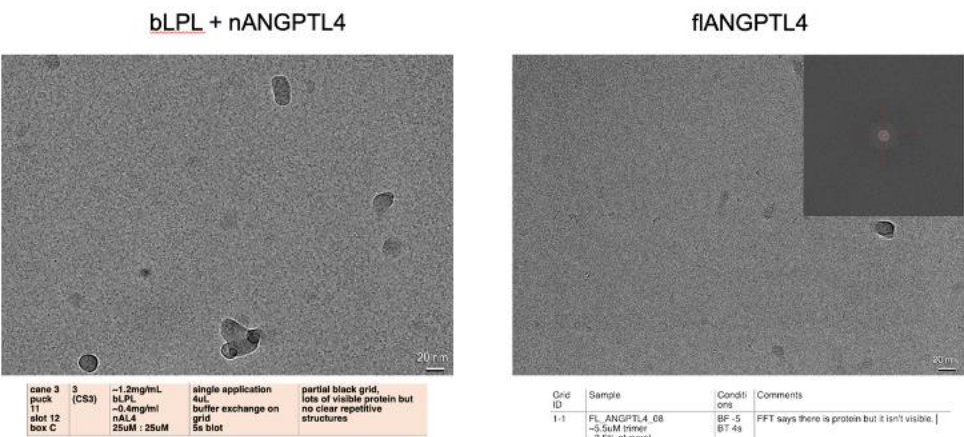


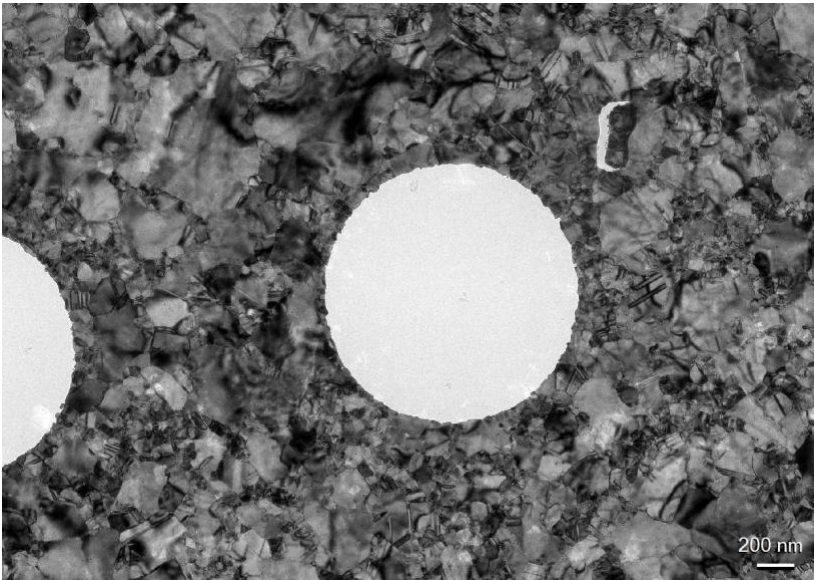
Supplemental Information

Note: There are several samples I am planning to ship. Based on the conversation I had with Mahira, it sounds like we make a couple grids at a time, then check for quality. If it seems that one or two protein samples are not looking good, I will have alternative constructs/complexes of the same two proteins available.

High Mag Representative Images (from Talos Arctica at home institution)
bLPL/ANGPTL4



Low Mag Representative Image (From Talos Arctica at home institution)
bLPL/ANGPTL4



Low Mag Representative Image (NSTEM, from home institution)

MBP-ANGPTL4

1.2uM (and washed, but maybe too concentrated)

