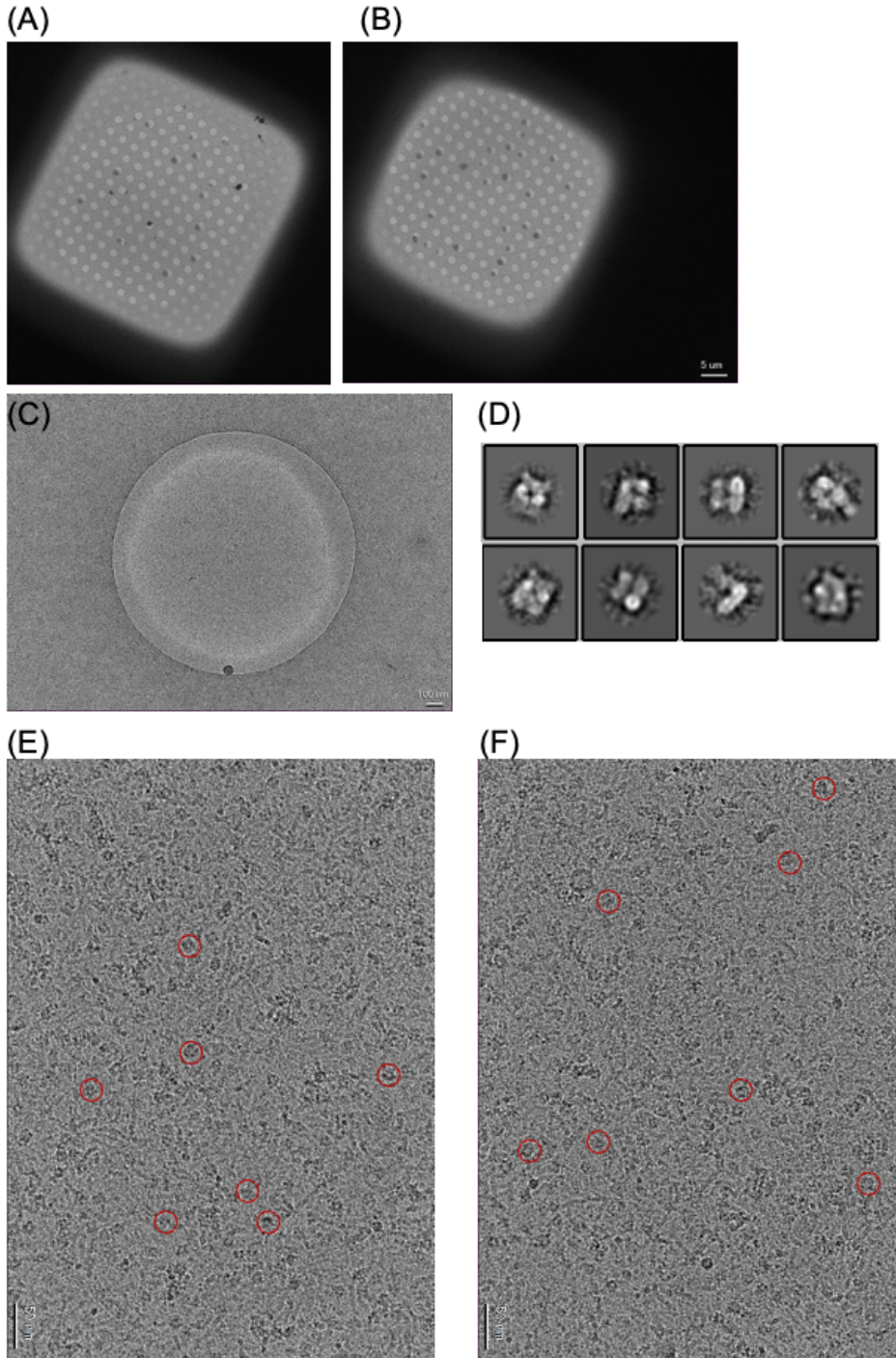


Supplementary information

For this current RAP1 proposal, we have frozen and screened three grids under similar sample and freezing conditions. The representative images at high- and low-magnifications, along with the preliminary data analysis are shown below.



(A-B) Representative images of the two grids squares acquired at low magnification.
(C) Representative images of the grid holes.

(D) Preliminary 2D class averages generated from ~3600 particles on 11 micrographs of similar quality to images in (E-F).

(E-F) Two representative micrographs acquired at 36,000x magnification with 1.15 Å/pixel. Red circles indicate protein particles.

All the representative images were acquired on a Talos Arctica (200kV) microscope equipped with a K3 camera.