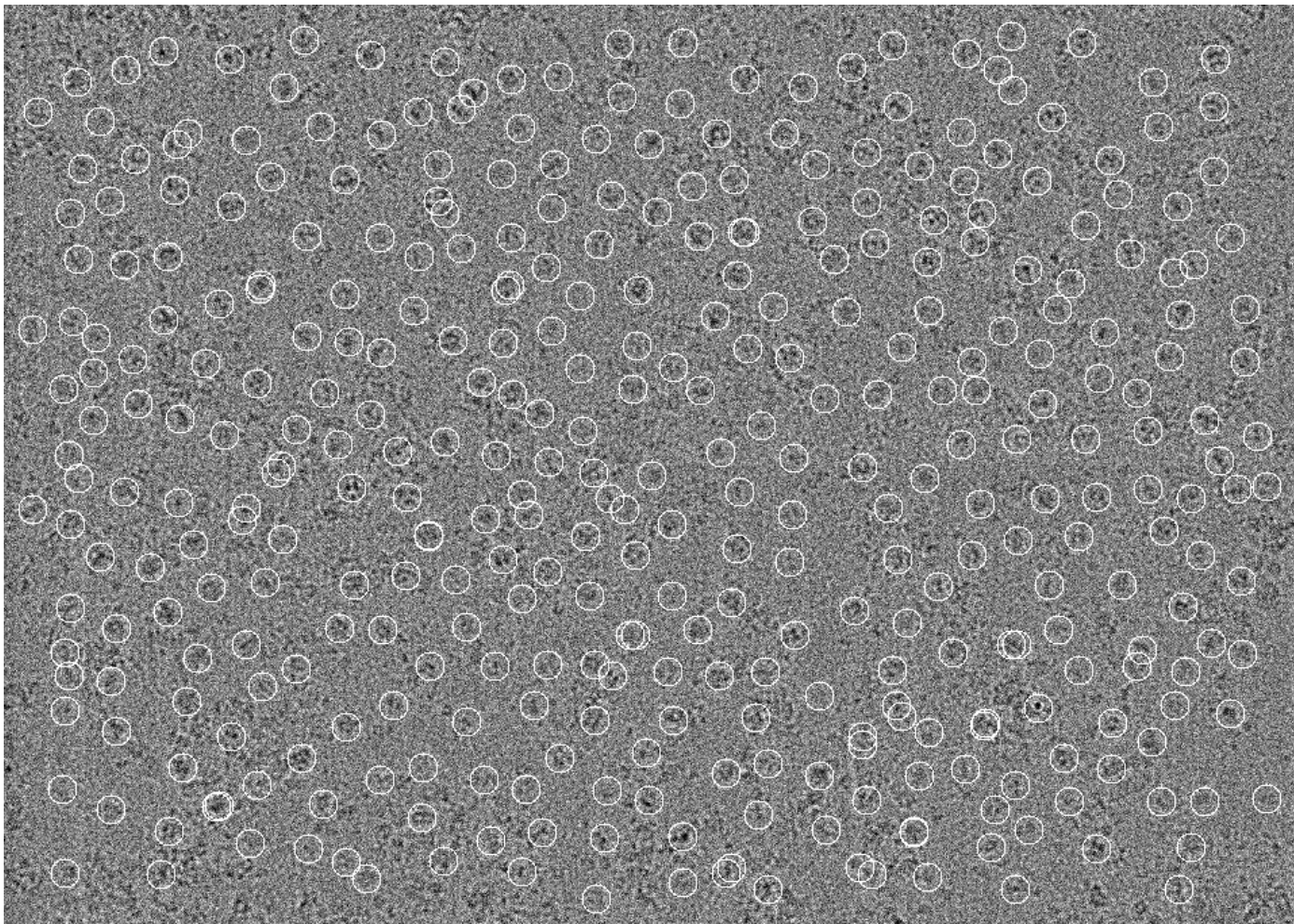
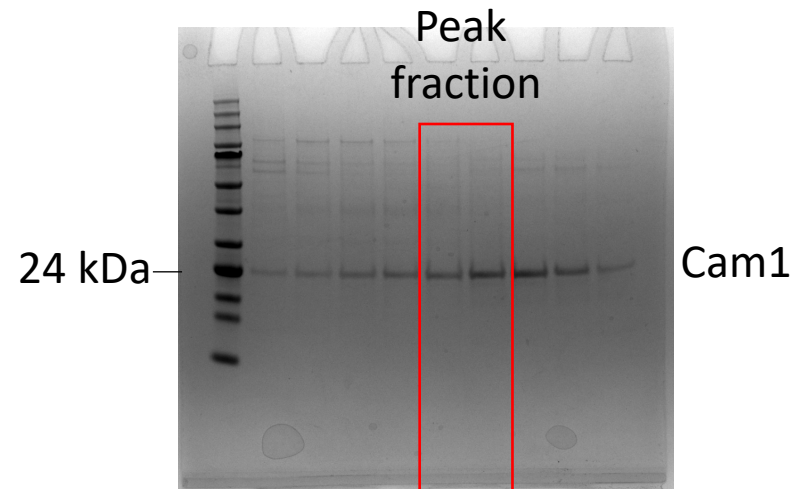


High magnification image:



Representative micrograph of Cam1-Fab in absence of cA4



SEC fractions in red box used for complex formation

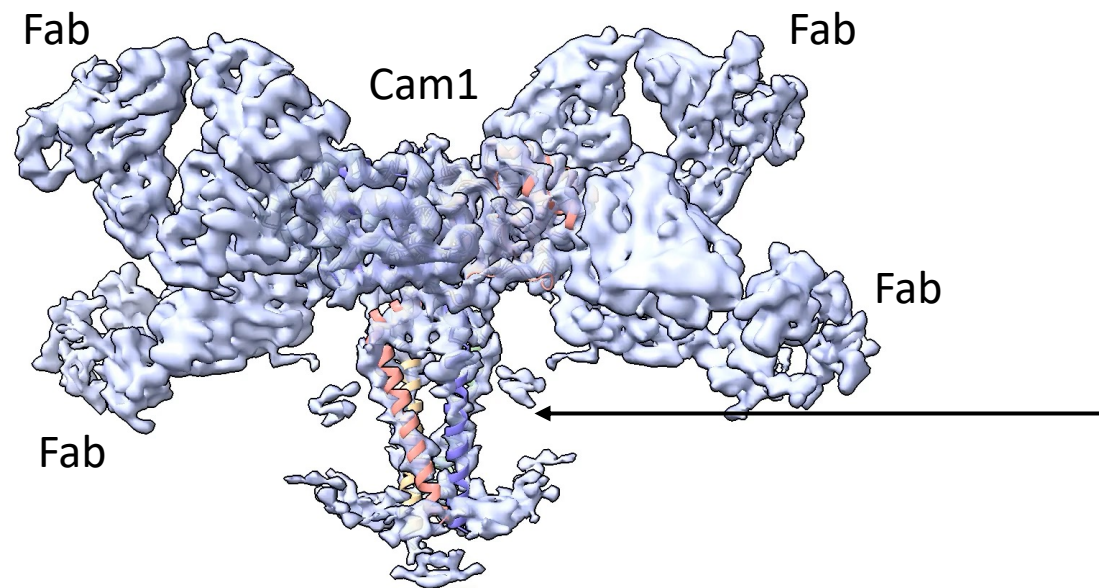
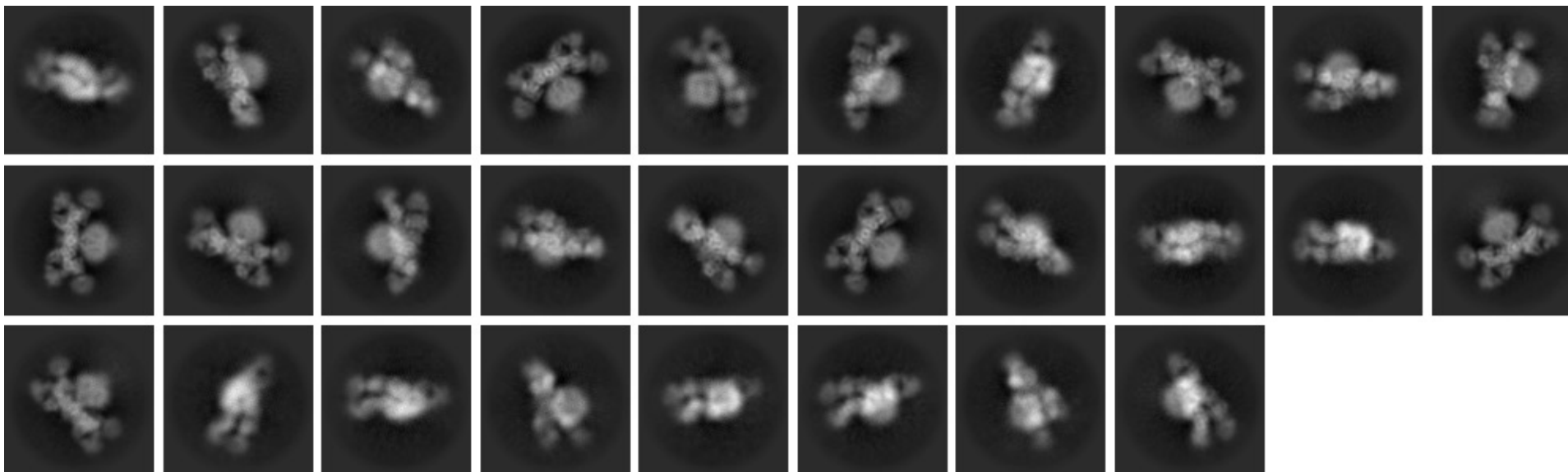


Cam1:Fab (B01) = 1:4



Dataset collected at NCCAT
Pixel size 1.069 Å/px
Total dose 53 e/Å²
Acceleration voltage 300 Kev

Current 2D classes with 136 k particles



- **Membrane part marked with black arrow has poor local resolution and side chains in this part are not visible.**
- **Global resolution 3.9 Å**

Membrane spanning region is poorly resolved

3D model of Cam1-Fab complex