

Figure 1. Representative cryo-EM micrograph (A) and 2D classifications (B).

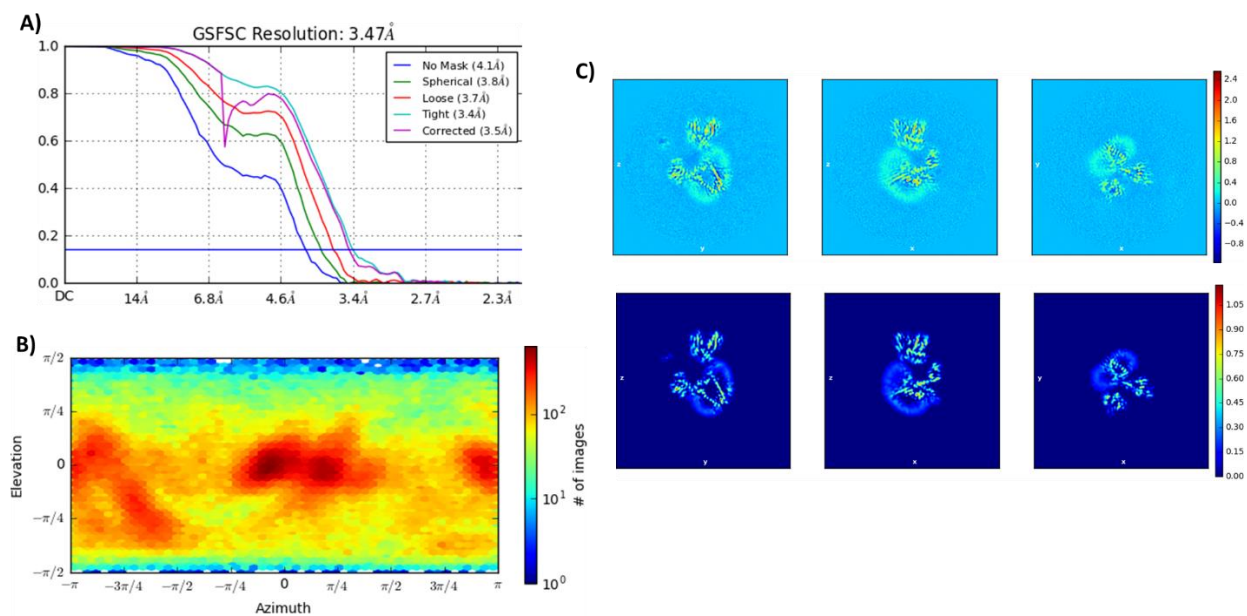


Figure 2. (A) Gold standard FSC curves calculated with different masks in cryoSPARC, (B) Distribution of orientations over azimuth and elevation angles for particles used for the final map, (C) Real space slices without (upper) and with (bottom) masks after local refinement in cryoSPARC.

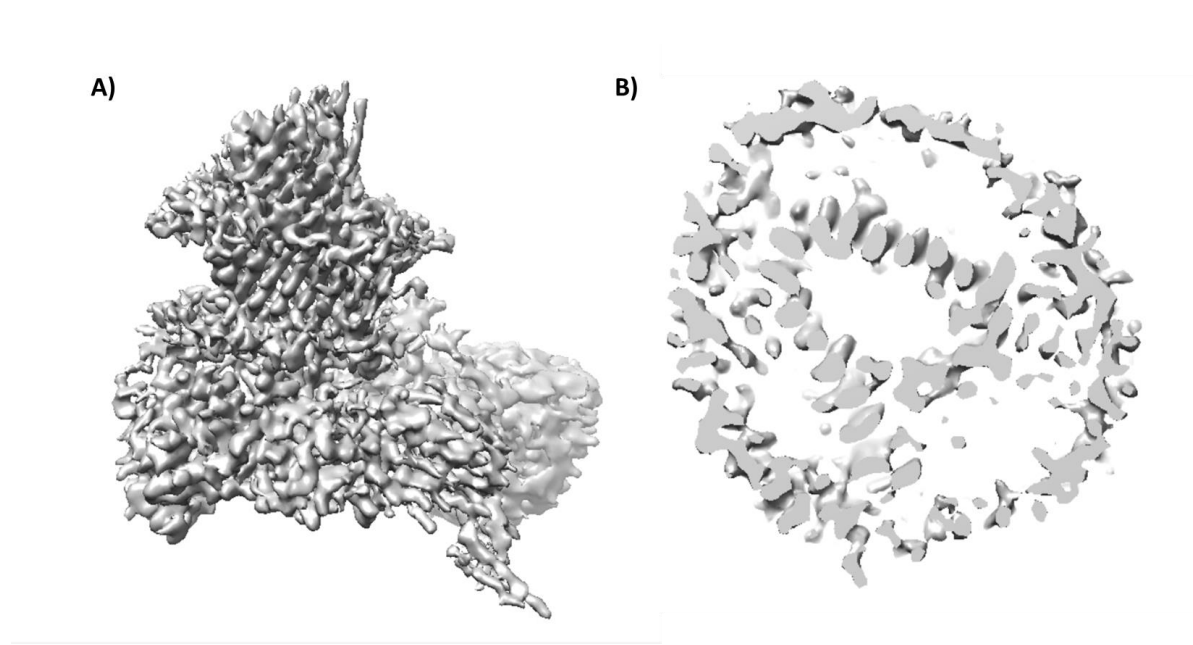


Figure 3. Side view of the map showing the final 3D construction (A), and the densities within the transmembrane region (B).