

Figure 1. Cryo-EM grid preparation. Sample images of the assembled IC on Quantifoil R1.2/1.3 Copper grids using the Atlas (A), Grid Square (B), Foil hole (C) and Data Acquisition (D) presets captured in EPU cryo-EM imaging software.

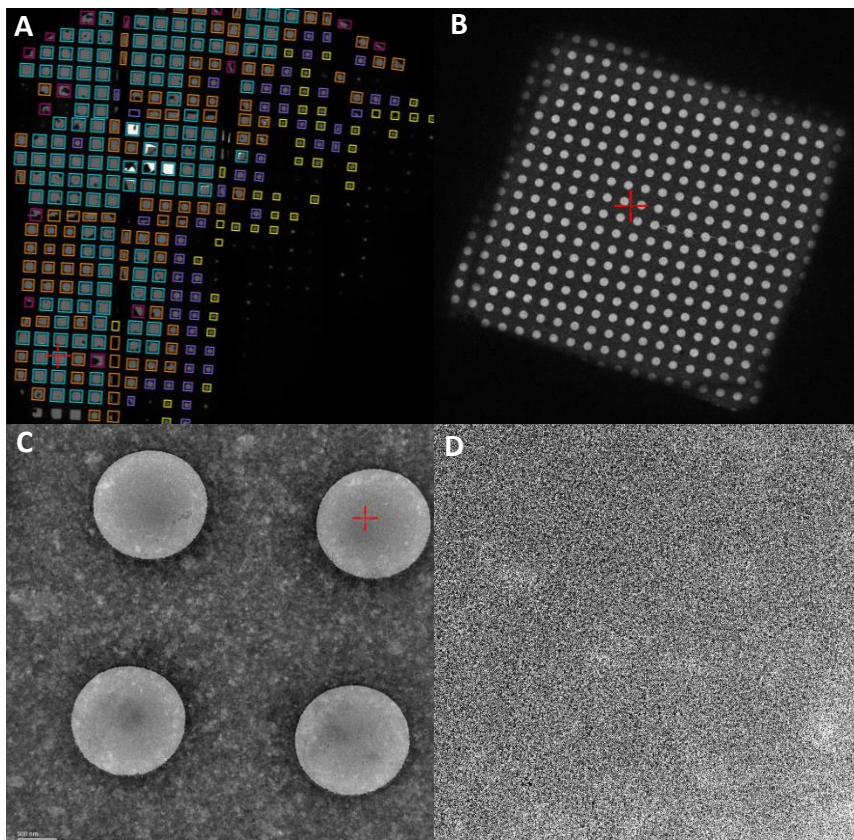


Figure 1. Cryo-EM grid preparation. Sample images of the assembled IC on UltraAuFoil R1.2/1.3 gold grids. Images depicted the same as in Figure 1.

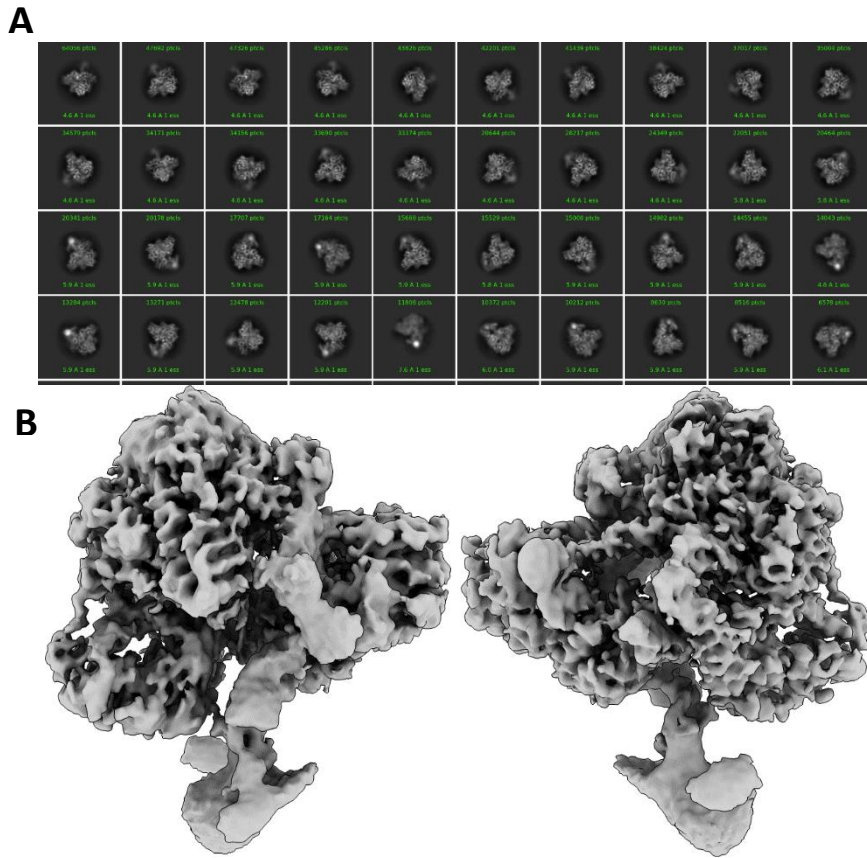


Figure 3. The most populated classes from 2D classification of selected particles containing the full initiation complex (A) from GUP1 data collection. (B) High resolution 3D-reconstruction of particles depicting 2 major orientations (2.7 Å).

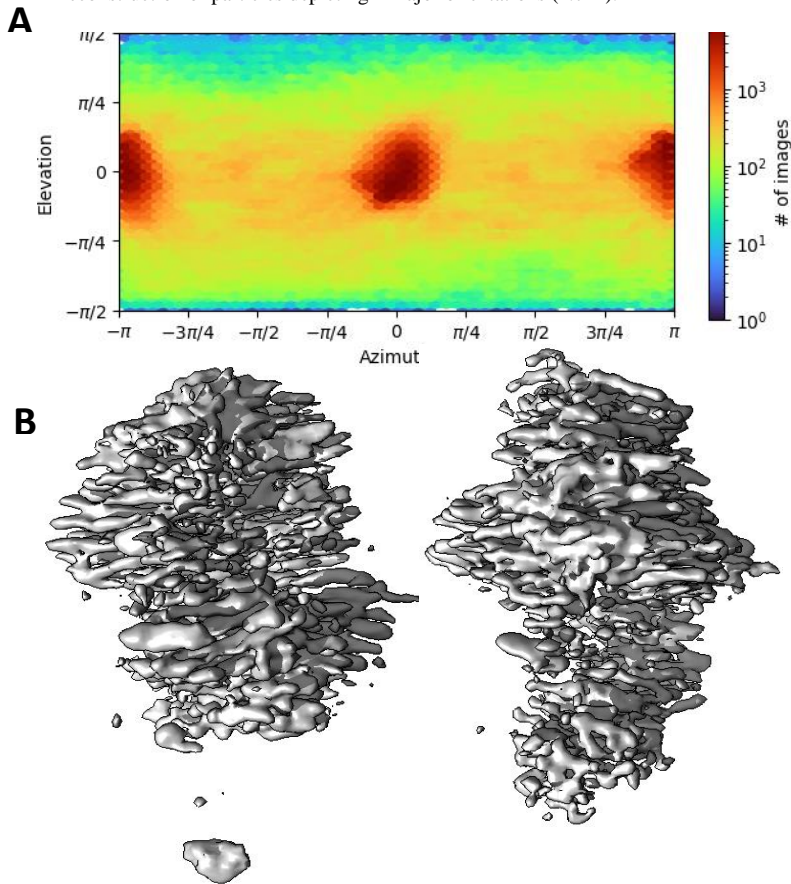


Figure 4. Orientation bias of GUP1 collected data. (B) The High resolution 3D-reconstruction of the same particles as in Figure 3 depicting orientation bias as evidenced by the “streaking” of electron map density (2.7 Å).