

Figure 1. Cryo-EM grid screening and 2D class average the auto-inhibited monomeric MLKL. (a, b) Representative micrographs of monomeric MLKL on the grids at low (a) and high (b) magnification, respectively. scale bar: 500 μm (a) and 100 nm (b). (c) 2D class average of the particles collected on Glacios during screening session using cryoSPARC.

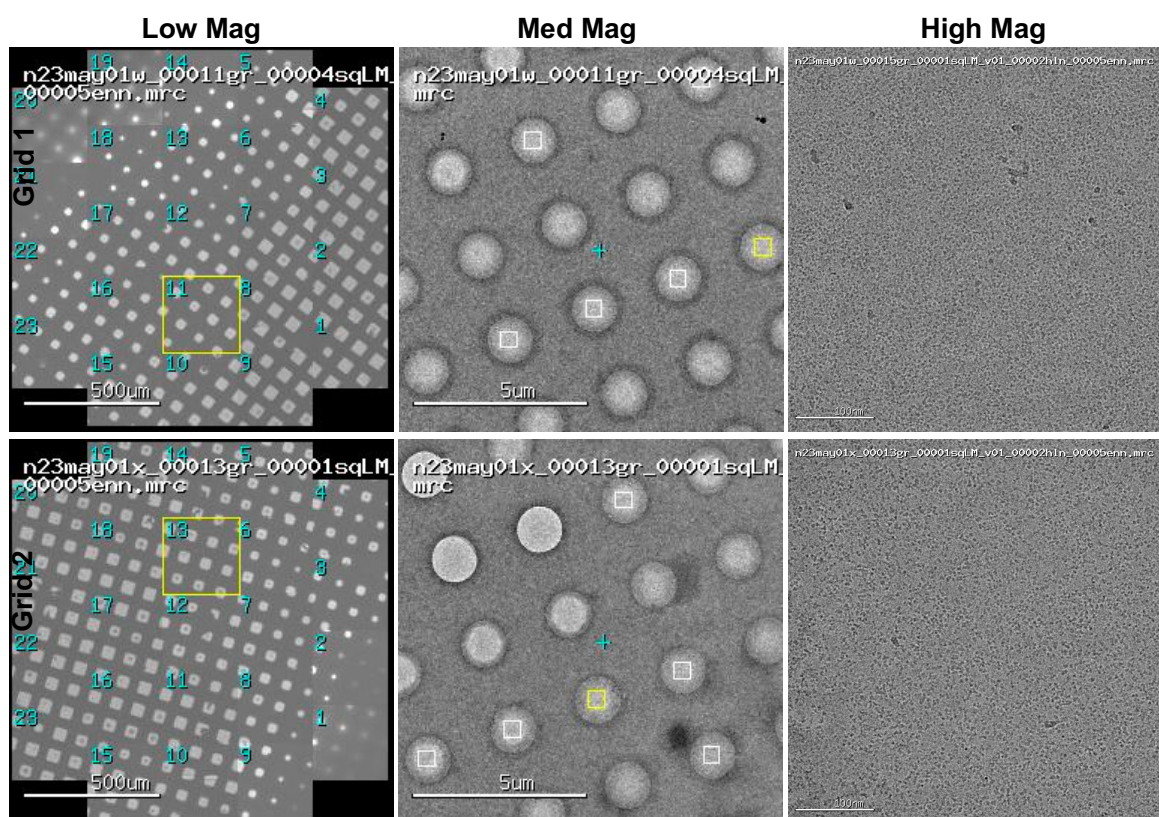


Figure 2. Representative low, medium, and high mag images of two screened grids of the tetramerized MLKL. Samples were prepared on Quantifoil R1.2/1.3 (Au 300mesh) holey carbon grids.

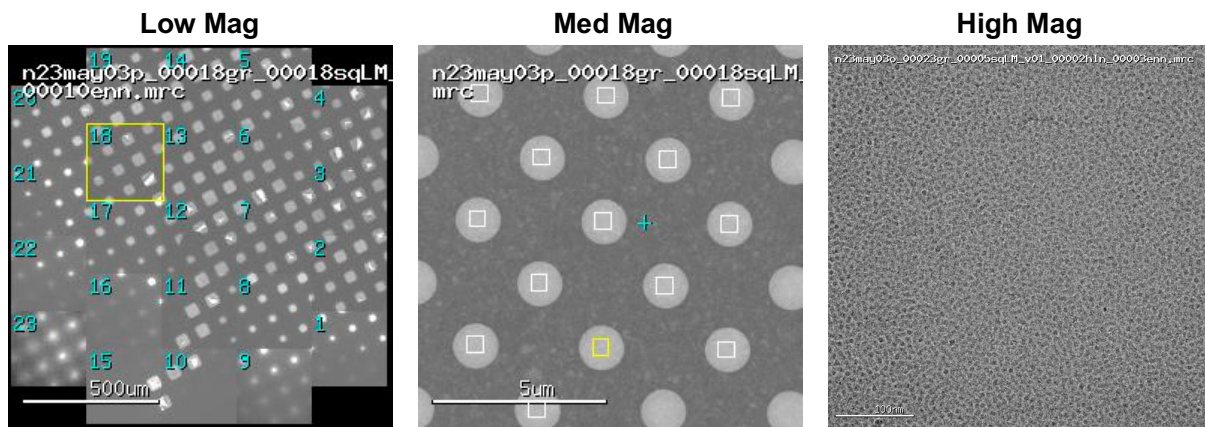


Figure 3. Representative low, medium, and high mag images of a screened grid of the MLKL pore. The sample was prepared on Quantifoil R1.2/1.3 (Au 300mesh) holey carbon grid.