

**Figure 1. Cryo-EM grid screening and data processing of apo Caspase-11<sup>CARD</sup> oligomer and Caspase-11<sup>CARD</sup> in complex with LPS-Ra.** (a and b) Severe aggregation of protein particles of both apo Caspase-11<sup>CARD</sup> oligomer (a) and Caspase-11<sup>CARD</sup> in complex with LPS-Ra (b) on quantifoil holey carbon grids vitrified with Vitrobot. (b and c) Representative micrographs of apo Caspase-11<sup>CARD</sup> oligomer (b) and Caspase-11<sup>CARD</sup>/LPS-Ra complex (c) on the grids plunged with Chameleon; scale bar: 100 nm. (e and f) Data processing of datasets of apo Caspase-11<sup>CARD</sup> oligomer (e) and Caspase-11<sup>CARD</sup>/LPS-Ra complex (f) using cryoSPARC.

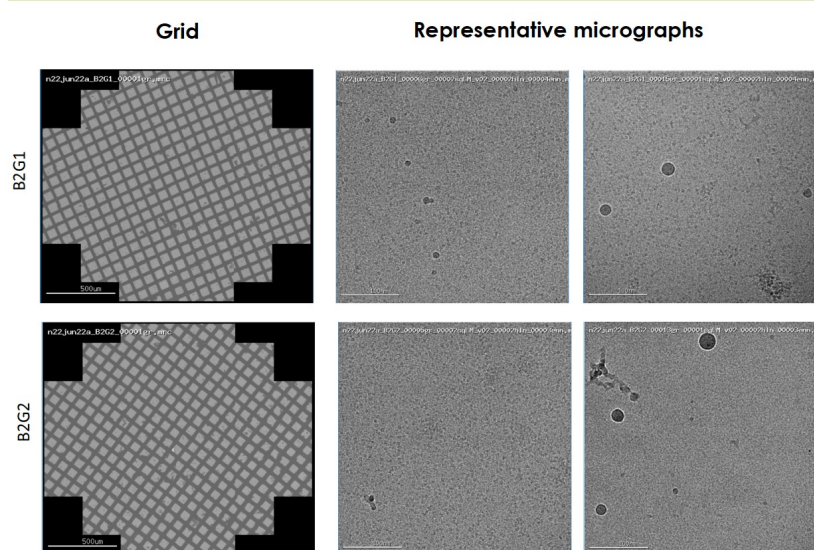
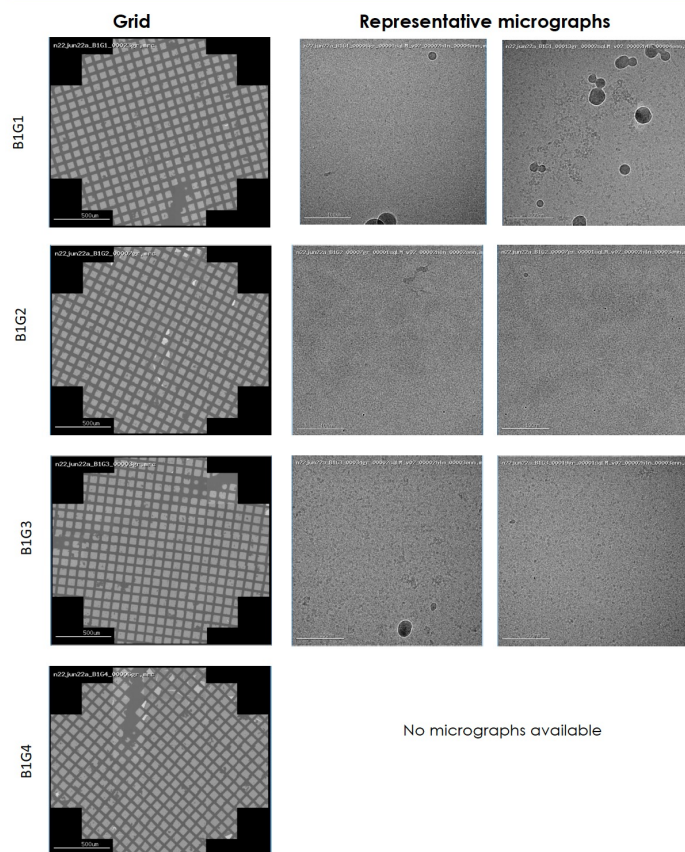


Figure 2. Representative low mag, high mag images of the grids we have plunged using Chameleon in our GUP2 session.