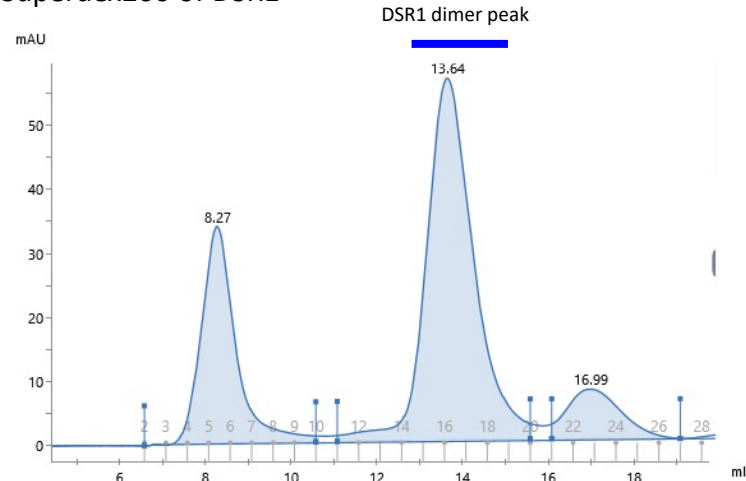


The purification and cryo-EM structure of DSR1 (*E. Coli*) at 3.16 Å

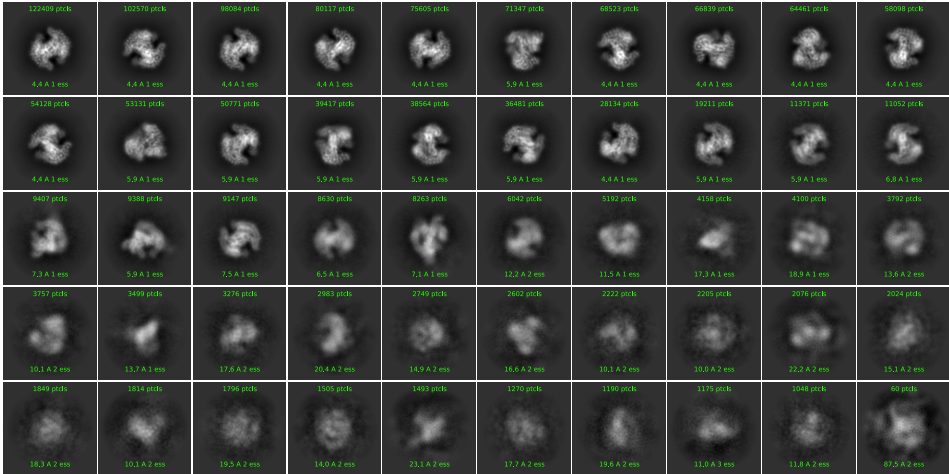
Superdex200 of DSR1



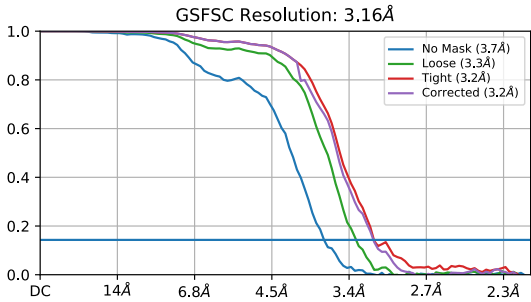
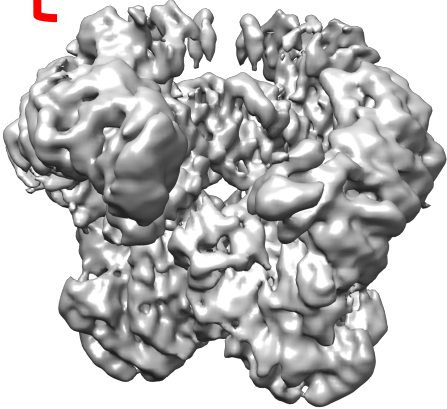
Buffer: 25mM Tris, pH=7.5, 250mM NaCl,
2mM betaMe, 0.002% DDM



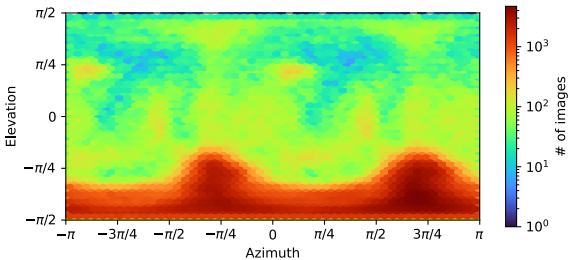
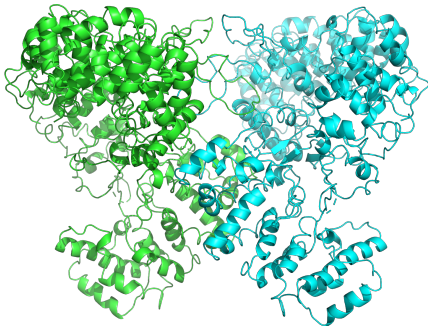
2D Classifications of DSR1



SIR2 domains are invisible
in DSR1 dimer cryo-EM map



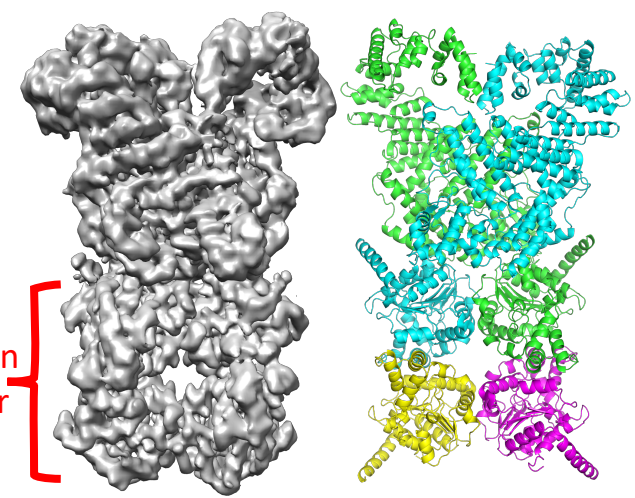
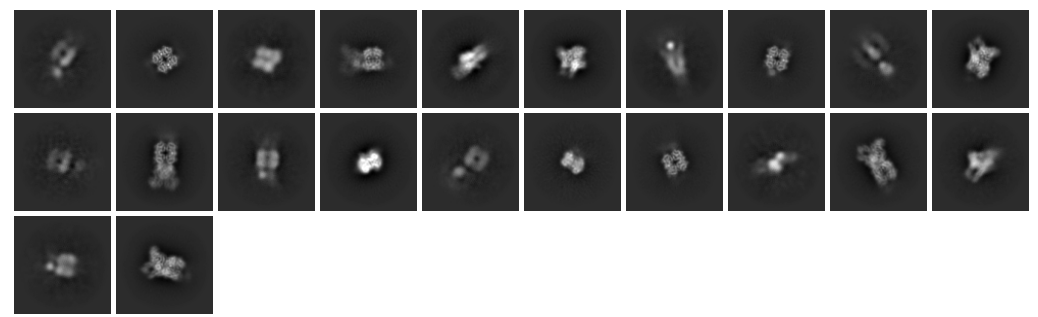
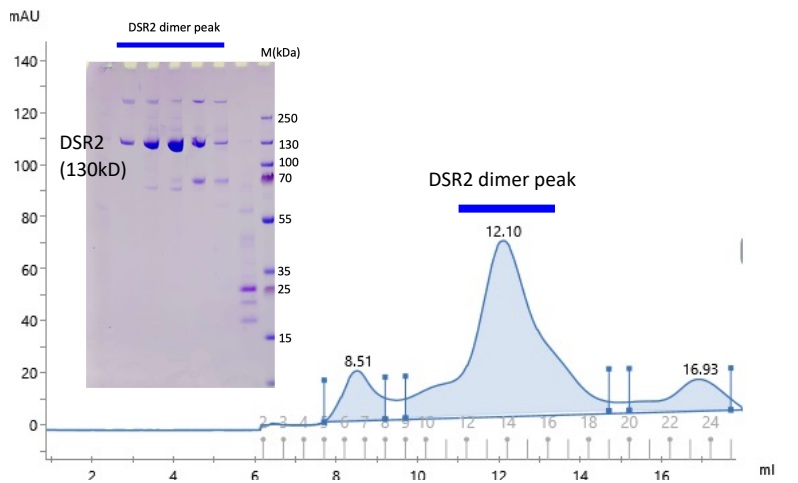
FSC curve of DSR1 cryo-EM map



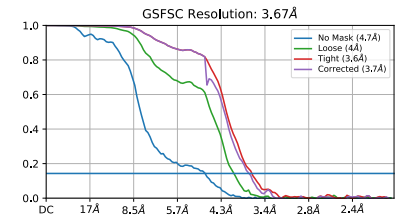
Direction Distribution of DSR1 cryo-EM map

The purification and cryo-EM structure of DSR2 (*B. Subt*) at 3.67 Å and our sample of DSR1+tail tube

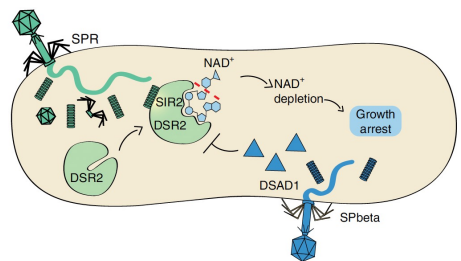
Superdex200 of DSR2



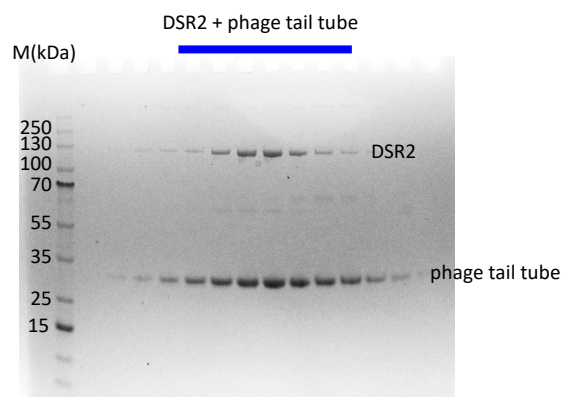
FSC curve of DSR2 cryo-EM map



Schematic model outlining the DSR2 antiviral system



Sample#1
DSR2+
Tail tube



Screened micrograph
→

