

Molecular basis of regulation of DNA engagement and cleavage in Topo VI - Dan Richman (James Berger Lab)
RAP1 for NCCAT-GUP3-DR220401

Figure 1. Example square, hole, and high-mag micrographs with clearly visible and well-dispersed Top6•minicircle DNA•AMPPNP particles in 112 nm and 39 nm ice (ALS measurements), from grids prepared with 3 and 4 sec blots.

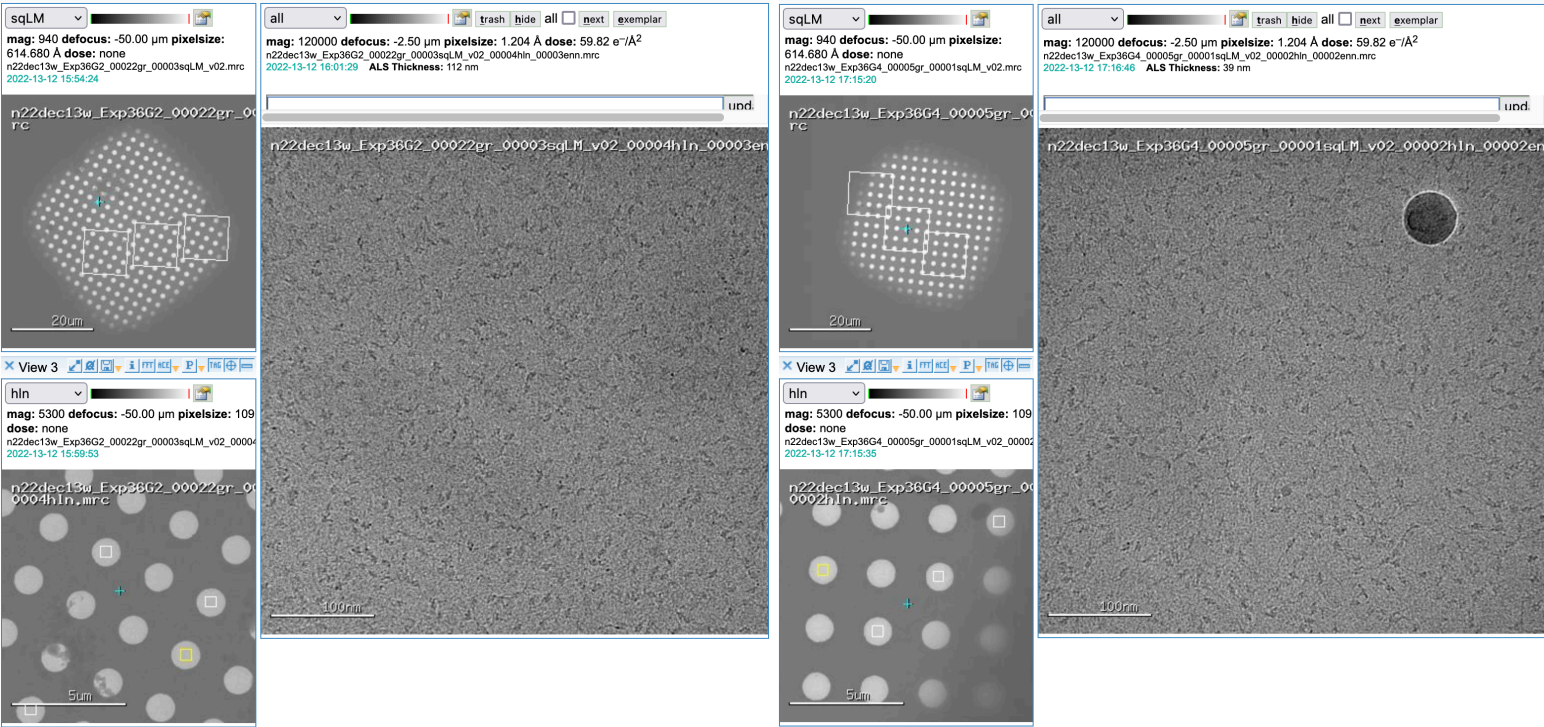


Figure 2. 2D classes derived from ~562k particles from ~1950 micrograph test dataset collected on NCCAT Glacios 1 on grid prepared similarly to those in Fig 1. Red box highlights an example of a rare particle view that could be improved by large data collection and possibly with stage tilt.

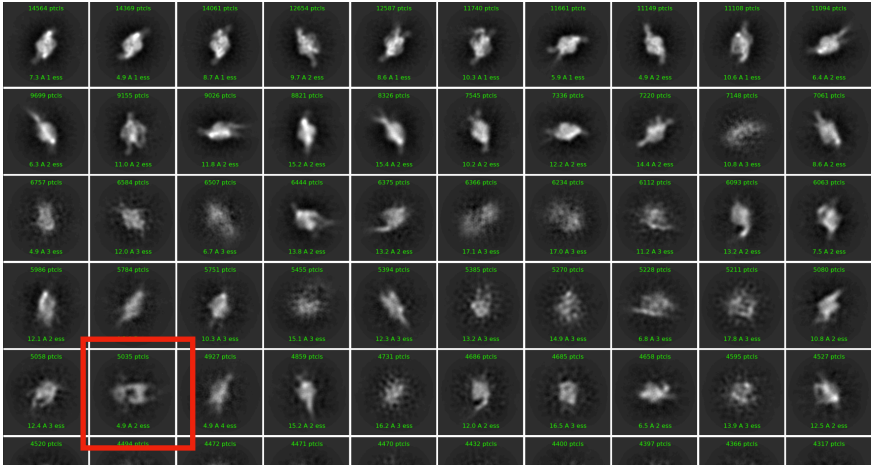


Figure 3. Atlases of 4 additional grids prepared with the same range of blot conditions as those in Figs 1-2, and stored at NCCAT along with grids of Figs 1-2.

