

Fig. 1: Complexing AnxA2 and SA10. (A) SEC chromatogram and (B) SDS-PAGE gel under reduced conditions showing the heterotetrameric complex (A2t) formed by AnxA2 and SA10. The peaks in (A) have been labelled accordingly on (B) for easy reference.

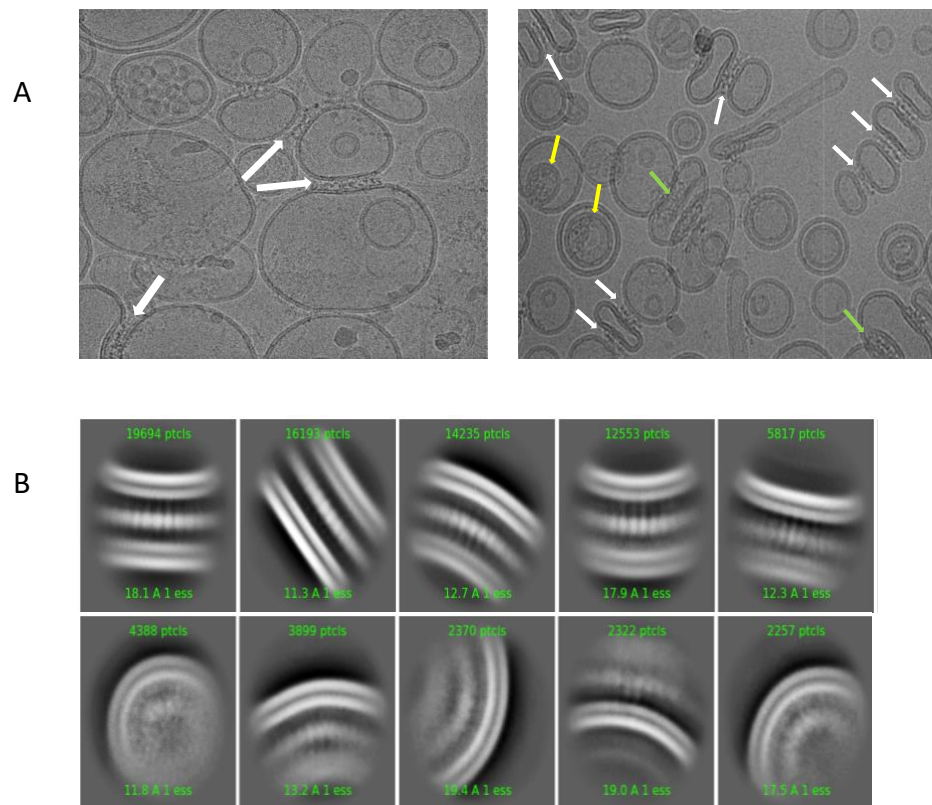


Fig. 2: Preliminary Cryo-EM SPA screening data. (A) Raw and aligned micrographs. (B) 2D classes showing A2t protein bridge sandwiched between liposomes.