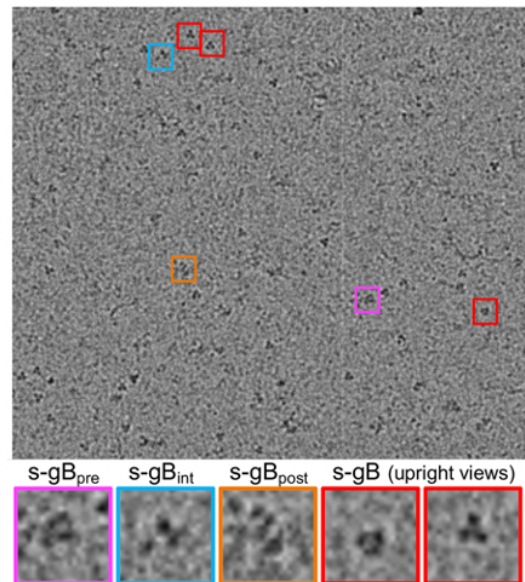


**Figure 1. Purification and NS-EM reconstruction of s-gB<sub>pre</sub>** (A) SDS-PAGE gel of s-gB<sub>pre</sub> size-exclusion column (SEC) purification. Changes in reducing conditions verify the existence of disulfide bonds. (B) SEC purification of s-gB<sub>pre</sub> results in homogenous sample for downstream analysis. Molecular weight indication for a gB monomer. (C) Cryo-EM structure of native HCMV prefusion gB (RCSB PDB ID: 7KDP) and (D) crystal structure of postfusion HCMV gB (RCSB PDB ID: 5CXF) fitted to NS-EM map. Protomers of gB are shown in different colors. *Panels A and B adapted from A. McGuire.*



**Figure 2. Initial cryo-EM studies of s-gB<sub>pre</sub>.** Initial cryoelectron micrographs of uncrosslinked HCMV gB reveals a preferred orientation problem.