

Figure 1: Protein Purification – PAGE/Western Blot

LPL is a ~55kDa (monomer mass) protein (purified from cow milk).
nANGPTL4 is a ~15kDa protein (monomer mass) (purified from *E. coli*).
flANGPTL4 is a ~50kDa protein (monomer mass) (purified from Expi293 cells).

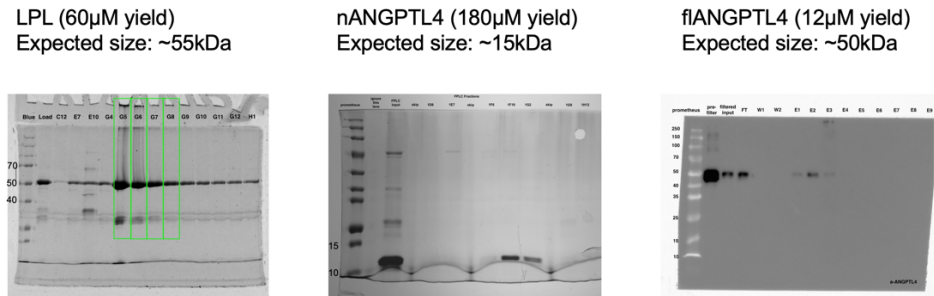


Figure 2: Heparin Affinity Chromatography, Western Blot, and Mass Photometry

LPL and nANGPTL4 may form multiple complexes with unique heparin affinities, but complexes do not appear to necessarily stay intact based on MW estimates from mass photometry.

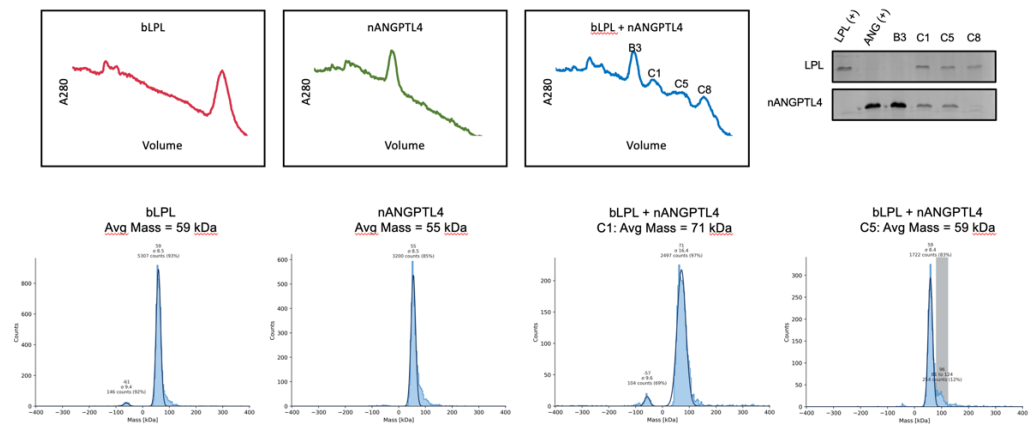


Figure 3: Preliminary CryoEM Screening Images (Vitrobot/Talos Arctica)

Example images from screening showing low contrast/signal.

