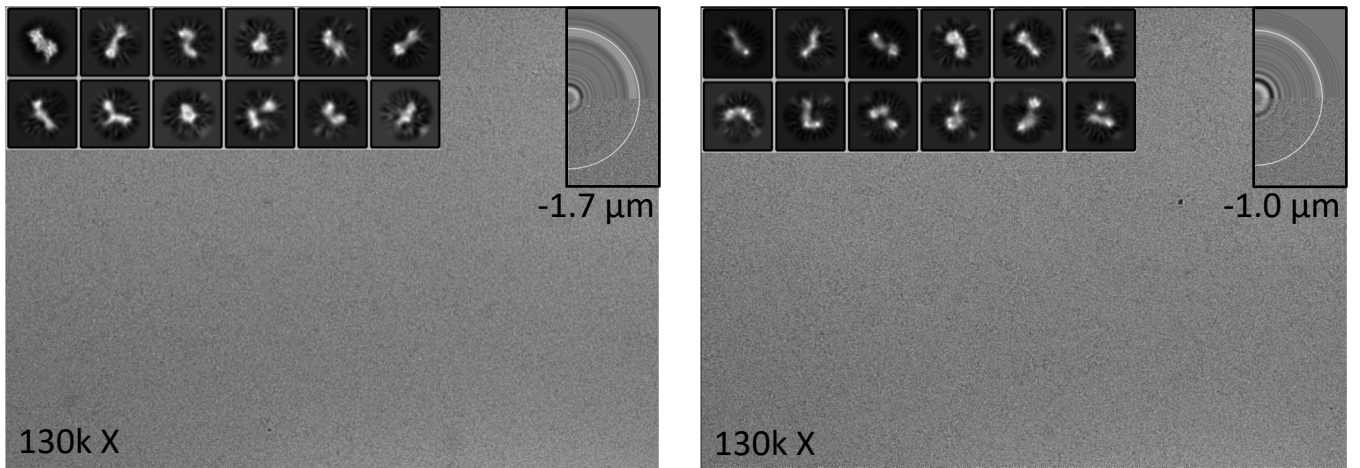
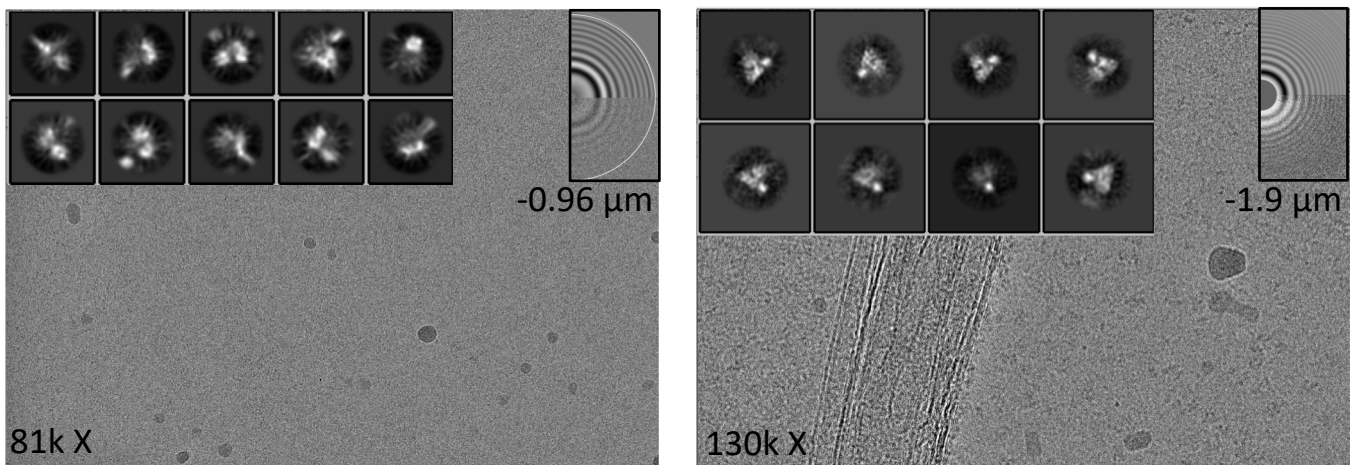


**Fig. 1.** NS-EM micrographs and classes of PARP1-DNA (left) and PARP1-DNA-HPF1 (right). Particles were extracted in 264 Å boxes and classified with a 180 Å mask.



**Fig. 2.** Cryo-EM of PARP1-DNA-HPF1 at 2 μM (left) and 5 μM (right). Note the single class with secondary structure features in the 2 μM sample. The defocus and magnification are indicated. Particles were extracted in a 200 Å box and classified with a 150 Å mask.



**Fig. 3.** Left: Cryo-EM of PARP1-DNA at 5 μM in thin ice shows inconsistent 2D classes (200 Å box, 140 Å mask). Right: Cryo-EM of PARP1-DNA-HPF1 at 2 μM on graphene oxide-coated grids shows discrete particles on the right of the crease and increased background from multiple sheets of graphene oxide on the left. 2D classes from 650 micrographs indicate a more coherent particle (270 Å box, 150 Å mask). The defocus and magnification of each micrograph are indicated.