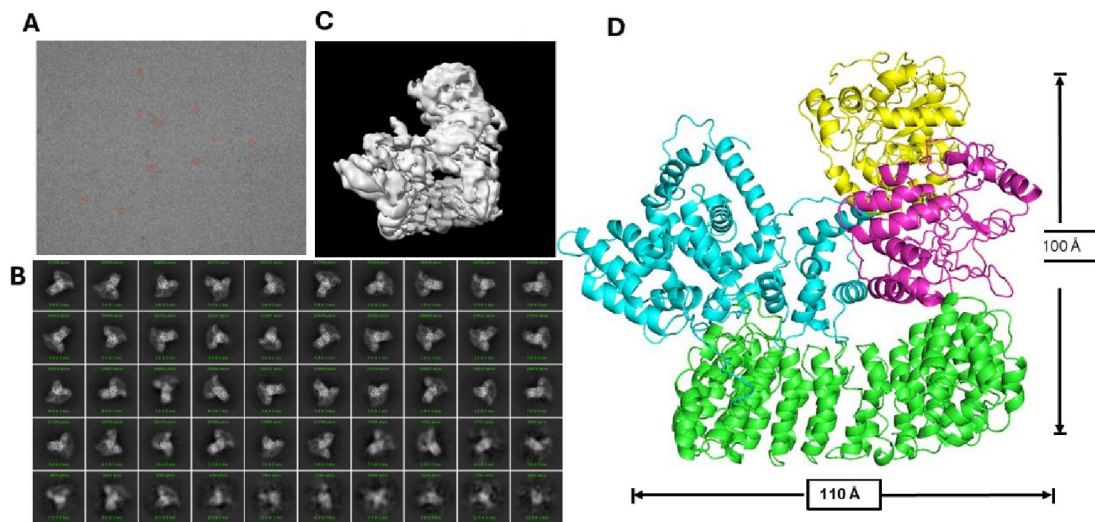
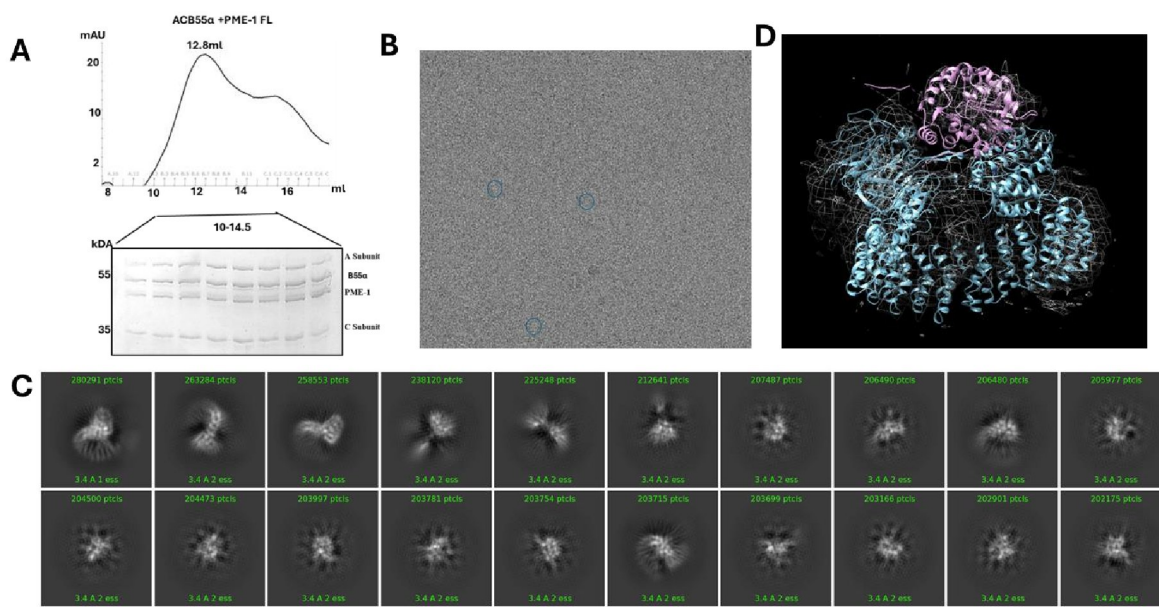


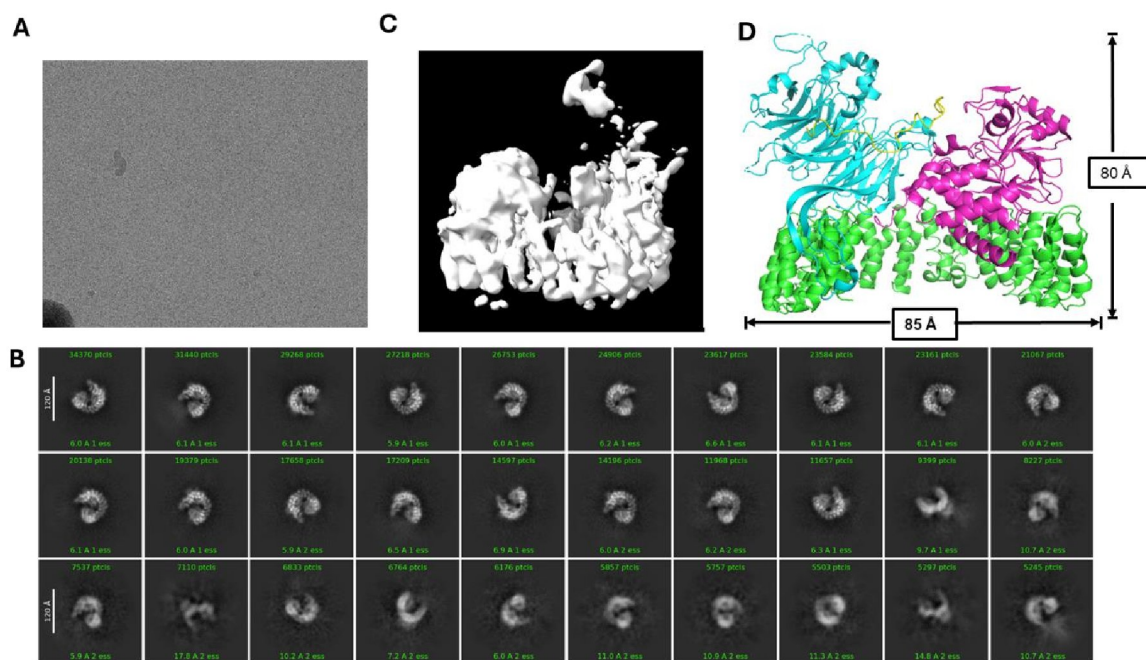
**Fig. 1.** A) Protein preparations of variants of PP2A-PR70-PME-1 holoenzyme complex. Each subunit was expressed, purified and assembled with other subunits followed by a size exclusion chromatography. complex peak at 12.8 ml. B). Proteins were examined by SDS-PAGE and visualized by Coomassie Blue. C&D) Initial Promising electron density map of PP2A-PR70-PME1 complex.



**Fig 2.** A). Representative micrograph of PP2A-PR70-PME-1 holoenzyme complex collected by Titan Krios with K2 camera at NYSBC. B). 2D class averages of PP2A-PR70-PME-1 holoenzyme complex. C). 3D map of PP2A-PR70-PME-1 holoenzyme complex. D) Low resolution structure of PP2A-PR70-PME-1 holoenzyme complex representing A subunit (green) PR70 (Cyan) C-subunit (magenta) PME-1 (yellow).



**Fig 3. A).** A) Protein preparations of variants of PP2A-B55a-PME-1 holoenzyme complex. Each subunit was expressed, purified and assembled with other subunits followed by a size exclusion chromatography. complex peak at 12.8 ml. Proteins were examined by SDS-PAGE and visualized by Coomassie Blue. **B).** Representative micrograph of PP2A-B55a-PME-1 holoenzyme complex **C)** 2D class averages of PP2A-B55a-PME-1 holoenzyme complex... **D)** Low resolution structure of PP2A-B55a-PME-1 holoenzyme complex representing PP2A-B55a holoenzyme (Cyan) PME-1 (magenta).



**Fig 4. A).** Representative micrograph of PP2A-B55a-CRTC-3 holoenzyme complex collected by Titan Krios with K2 camera at NYSBC. **B).** 2D class averages of PP2A-B55a-CRTC-3 holoenzyme complex. **C).** 3D map of PP2A-B55a-CRTC-3 holoenzyme complex. **D)** Low resolution structure of PP2A-B55a-CRTC-3 holoenzyme complex representing A subunit (green) B55a (Cyan) C-subunit (magenta) CRTC-3 peptide (yellow).