

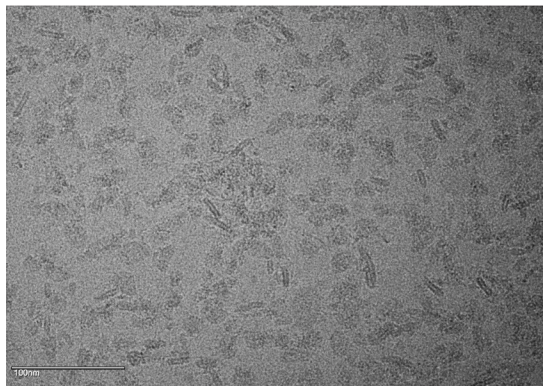
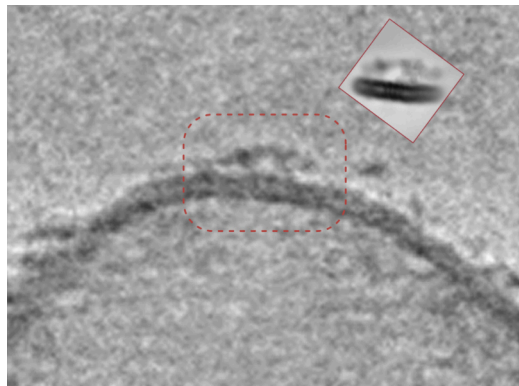
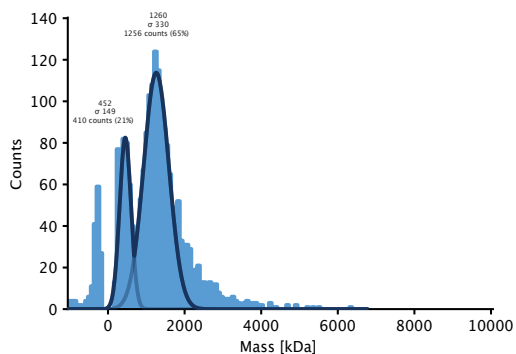
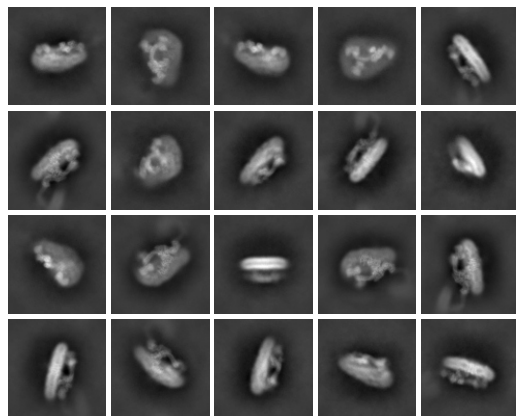
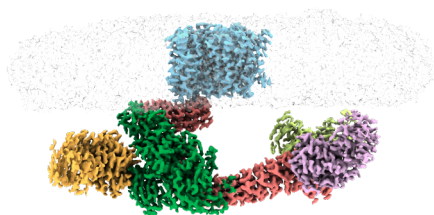
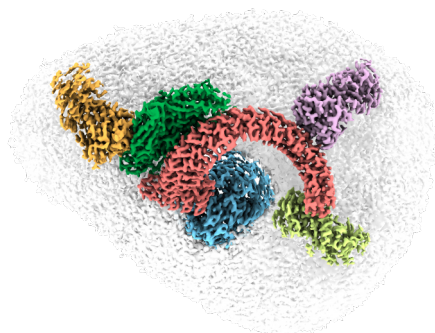
A**B****C****D****E****F**

Figure 1: Preliminary structure of erythrocyte ankyrin complex. (A) Representative micrograph. (B) Comparison of 2D class averages of digitonin solubilized complex with complex embedded in native membrane (tomogram of vesicles generated from erythrocyte ghost membrane) (C) Mass photometry (refeyn) histogram, showing a peak corresponding to the ankyrin complex at 1.2MDa. (D) Representative 2D class averages. (E,F) side and top views of an initial reconstruction of the complex at 2.7 Å. The transmembrane domains of band 3 are poorly ordered, and not visible at the contour level depicted here. Rh trimer is colored cyan, Ankyrin is colored salmon, protein 4.2 is colored green, and the three AE1 dimers are colored orange, yellow and mauve.