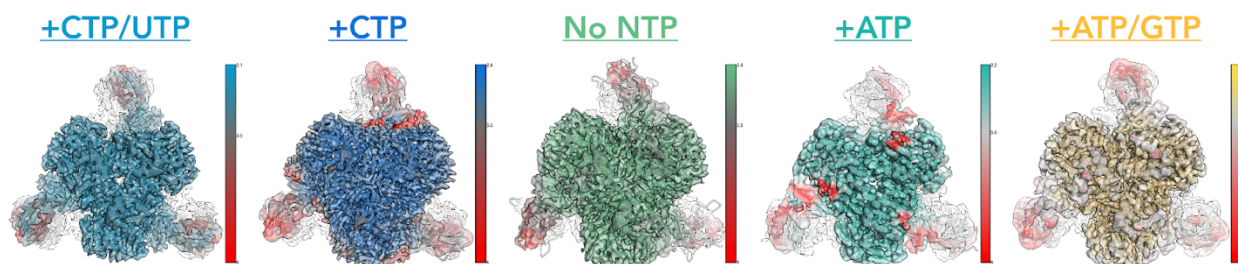
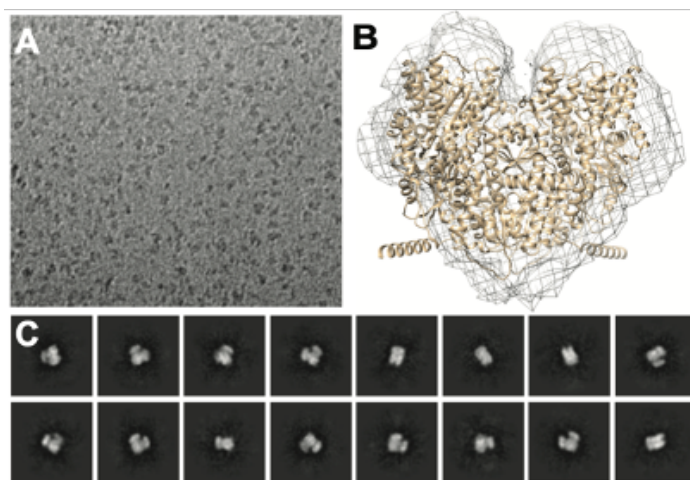


**Figure 1.** (A) 2D classes show significant inter-subunit motion in RNR. (B) Example consensus map showing that the small subunit (green) is poorly resolved relative to the large subunit (blue). (C) 3D classification focused on the small subunit region shows that it can adopt various conformations. Black guidelines are shown for easier comparison.



**Figure 2.** Consensus maps of five distinct active states of ATCase ranging from 2.7-3.0 Å nominal resolution. Each state is displayed in the same orientation and colored by local resolution (from red to another color) as estimated by cryoSPARC.



**Figure 3.** (A) Example micrograph of COR frozen rapidly in air. (B) Consensus map aligned with AlphaFold prediction. (C) 2D classes.