

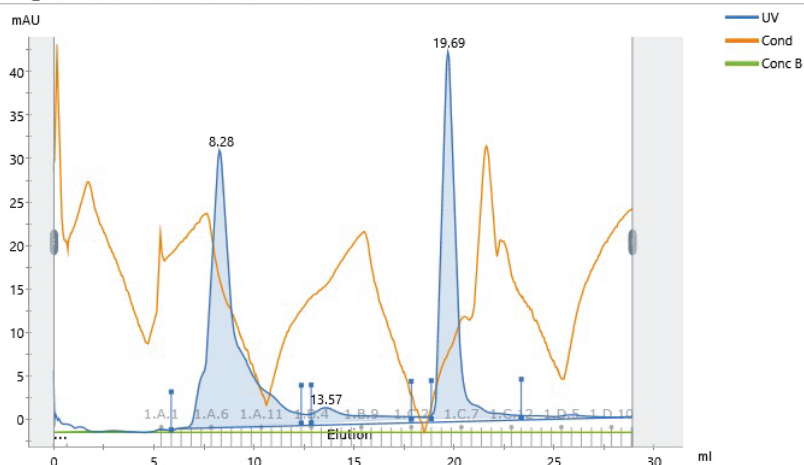
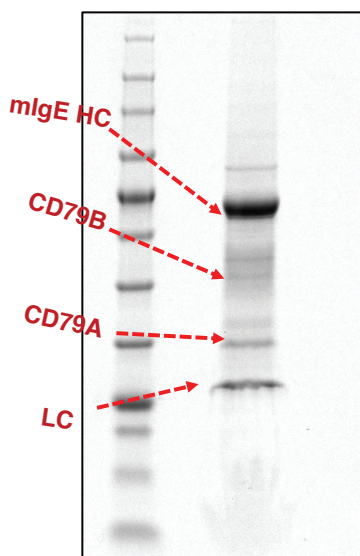
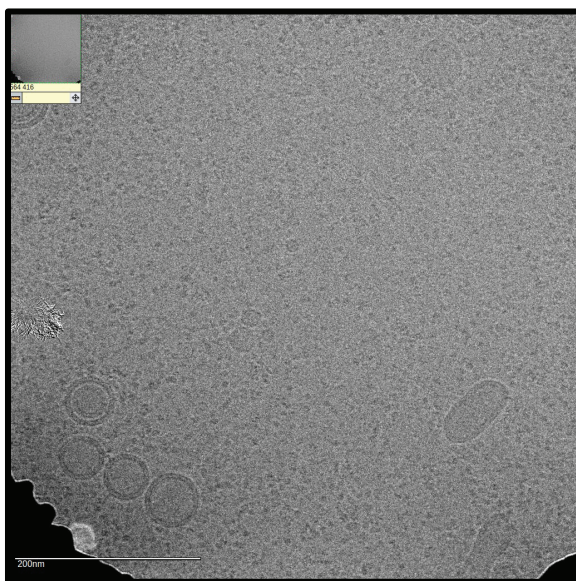
A)**mlgE_8f9_BCR_GNT1_031322_001****B)****C)**

Figure legend. **A)** A size-exclusion chromatogram of detergent solubilized (0.05% GDN + 0.005% CHS) BCR preparation ran on a Superdex200 10/300 column. The first peak eluting at approx. 8.3 mL corresponds to the ternary complex as shown on a Coomassie-stained SDS-PAGE in **B)**. **C)** Preliminary screening of the cryo conditions on an F20 operated at 200 kV and on Quantifoil R 1.2/1.3 gold grids. The size of the proteins on the grid indicates that the ternary complex (IgE-CD79a/b) may be falling apart as the expect size is approximately 20 nm. The particles shown here are about 8-10 nm.