

Structural studies of HIV-1 Reverse Transcriptase and interactions with host factors

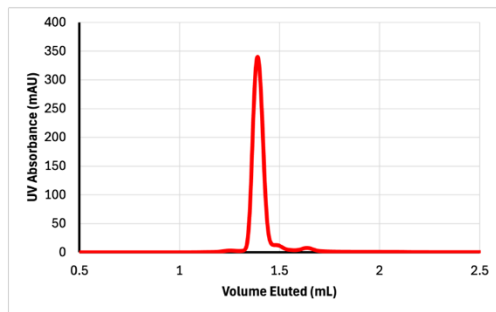


Figure 1: Size-exclusion chromatography of RT/eEF1A1 complex

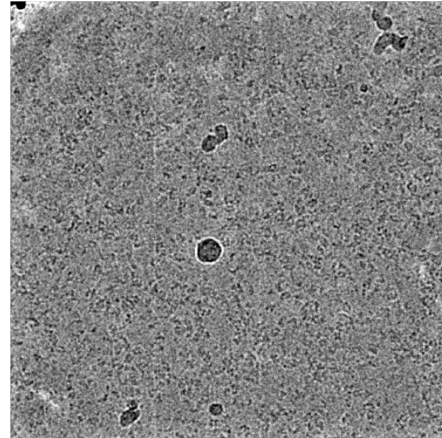


Figure 2: 200 kV micrograph from RT/eEF1A1 screening session

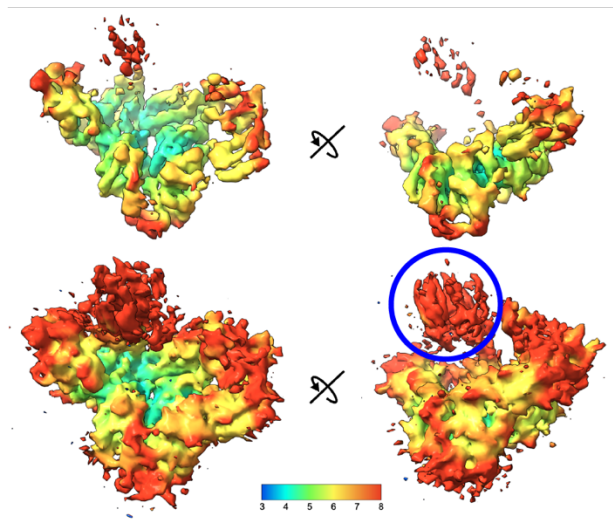


Figure 3: Best RT/EEF map at low and high contour (data from same session as Figure 2) (blue circle encapsulates eEF1A1)

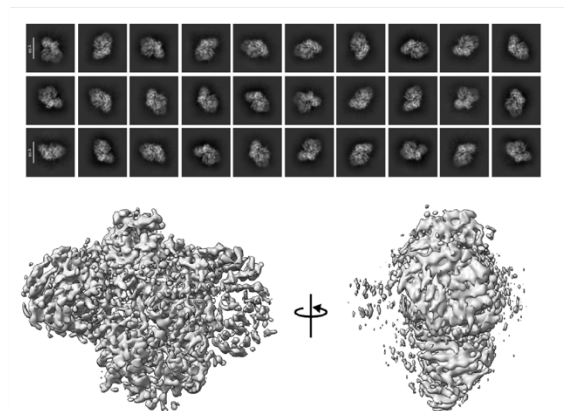


Figure 4: 2D and 3D classes of RT/eEF1A1/DNA aptamer, highlighting preferred-orientation issues