

Preliminary Data

Youzhong Guo

Homogeneous single particles of membrane proteins in the form of NCMN particles shown on the micrographs of negative stained EM grids

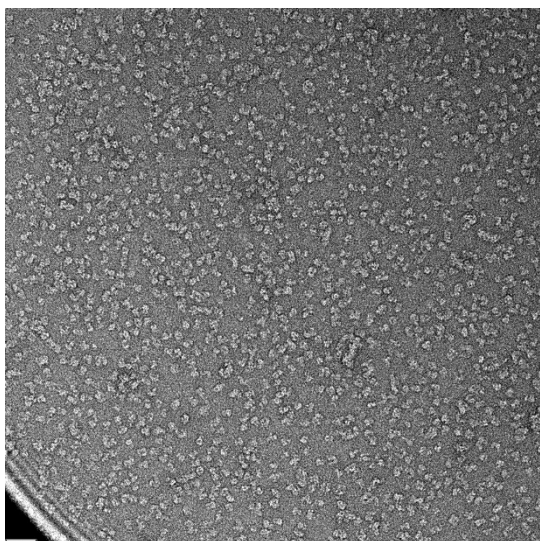


Figure 1. MsbA from *E.coli*
A model protein of ABC transporter

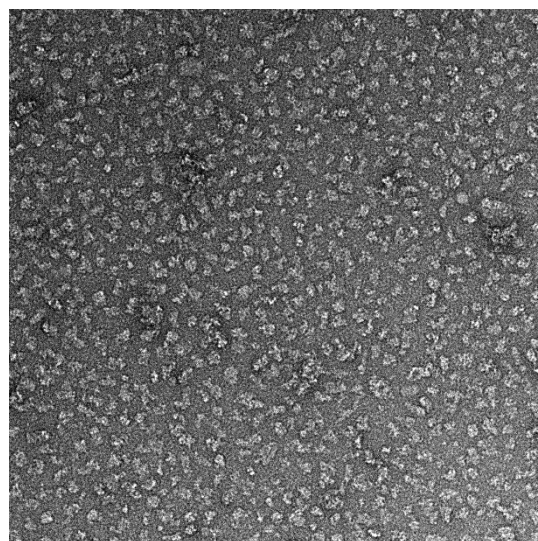


Figure 2. PMA1 from *S. cerevisiae*
Yeast A model protein of ATPase

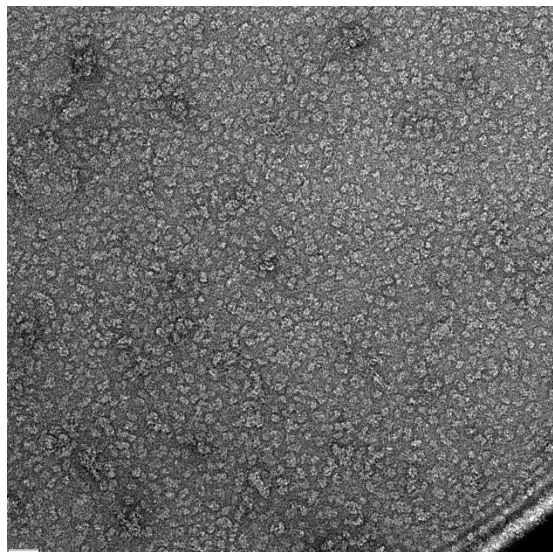


Figure 2. ABCB1 from human cell
A model protein of ABC transporter

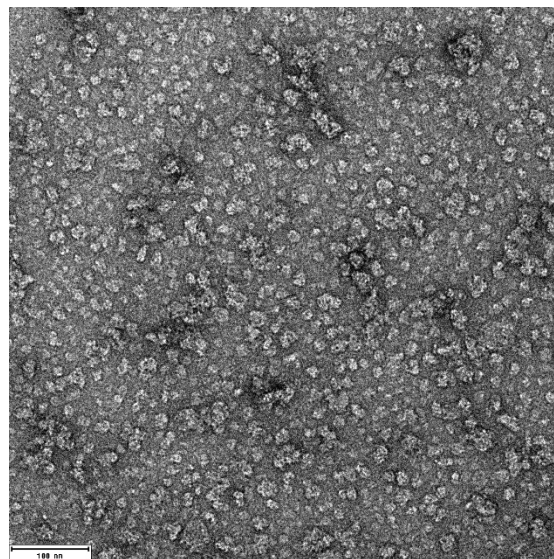


Figure 4. μ -Opioid receptor from human cell
A model protein of GPCR