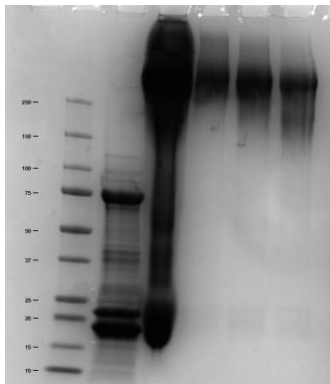
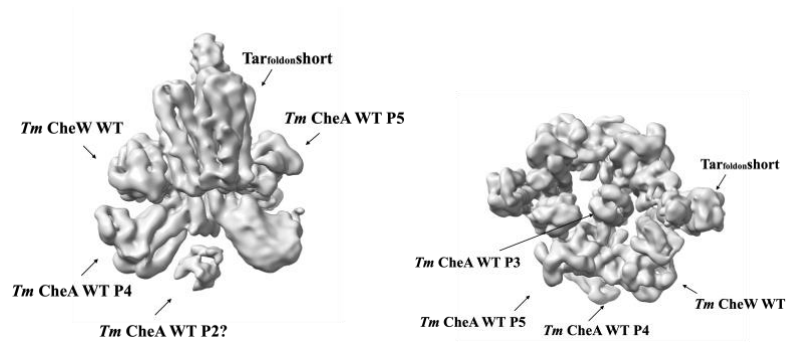


Figures/Preliminary Results:

(A)



(B)



(C)

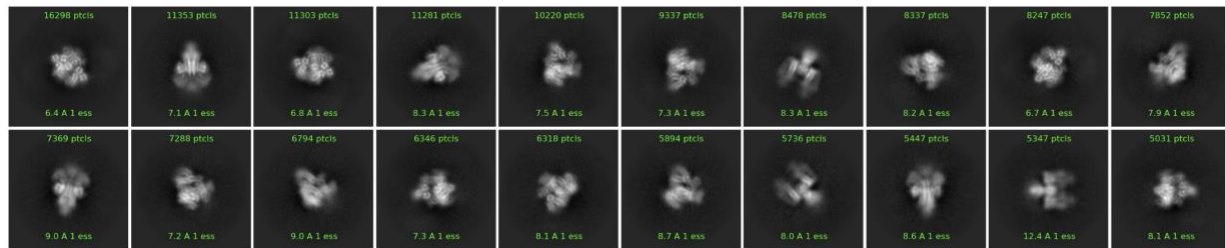
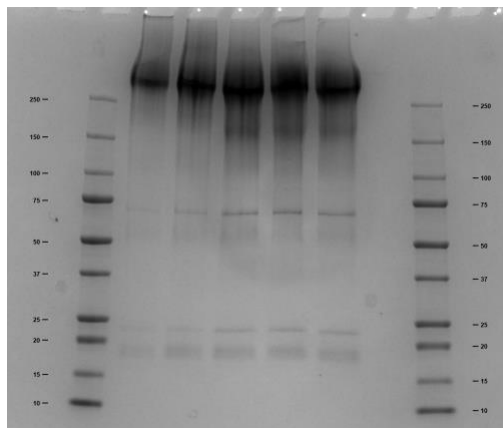
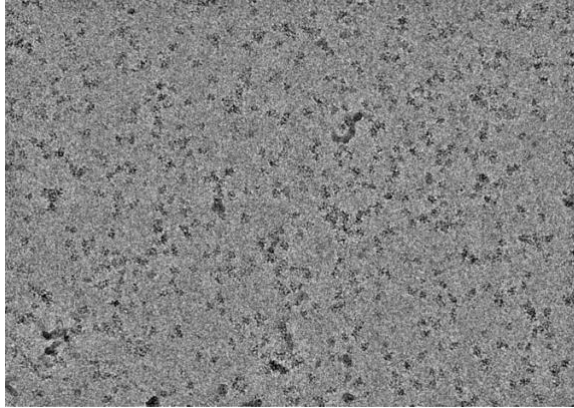


Figure 1: Tar ternary complex in the kinase-off state. (A) SDS page gel of the cross-linked Tar ternary complex (312 kDa) reconstituted using *Tm* CheA WT, *Tm* CheW WT, and Tar_{FoldonShort}. (B) Tar ternary complex at 4.5 Å resolution (rigid region). Data collected using 300 keV Krios (NCCAT-GUP1-BC230625). (C) Representative 2D classes of Tar ternary complex.

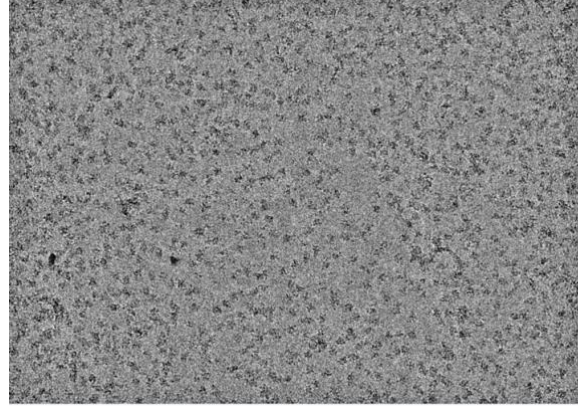
(A)



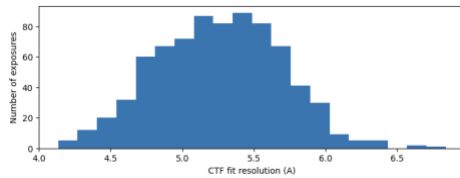
(B)



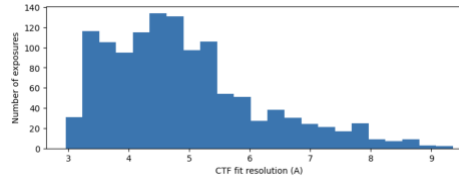
(C)



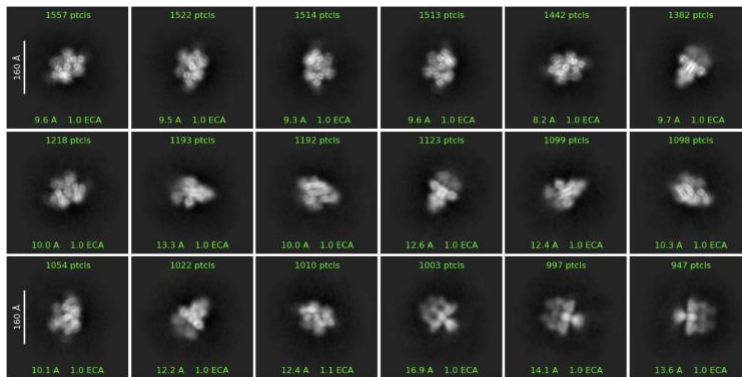
(D)



(E)



(F)



(G)

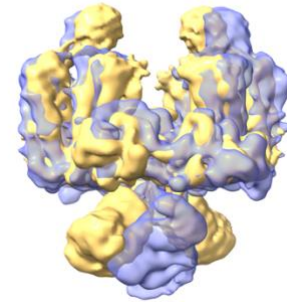


Figure 2: Tar ternary complex in the kinase-on state. (A) SDS page gel of the cross-linked Tar ternary complex (302 kDa) reconstituted using *E. coli* CheA, *E. coli* CheW, and Tar_{Foldon}Short,. (B) Tar ternary complex in the kinase-on state on Quantifoil Cu 200 1.2/1.3 grid. Screened with 200 keV Arctica (CCMR) (C) Tar ternary complex in the kinase-on state on UltraAufoil Au 300 1.2/1.3 grid. Screened with 200 keV Arctica (CCMR). (D) CTF range of data collected on Cu grid using the 200 keV Arctica. (E) CTF range of data collected on Au grid using the 200 keV Arctica. (F) Representative 2D classes of Tar ternary complex in the kinase-on state. (G) Yellow: Tar ternary complex in the kinase-on state (~900 movies collected) superimposed with the the structure for the kinase-off state(Purple).