

**Molecular basis of regulation of DNA engagement and cleavage in Topo VI - Dan Richman (James Berger Lab)**

Figure 1A. Final step of purification, SEC. Heterotetramer (A2B2) runs stably as single peak.

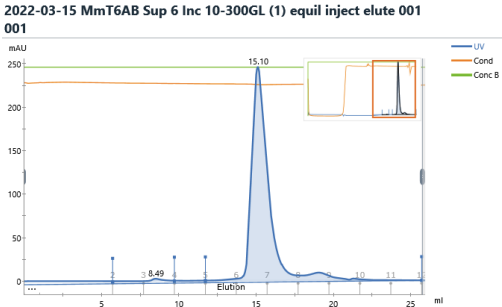


Figure 1B. SDS-PAGE. SEC fraction 6 (second to last lane) shows high purity of A and B subunits.

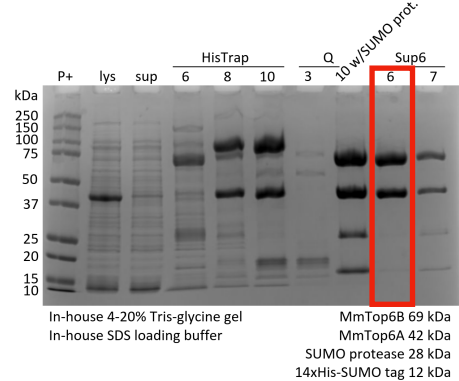


Figure 1C. Agarose DNA gel of supercoil relaxation assay showing recombinant purified Top6 is active.

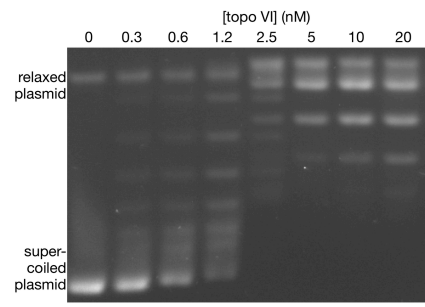


Figure 2A. Example motion-corrected micrograph of Top6•minicircle DNA•AMPPNP sample

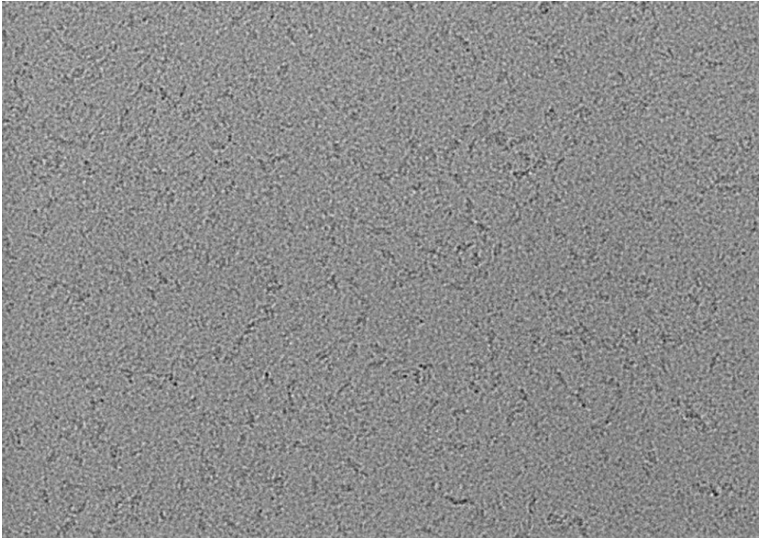


Figure 2B. Example motion-corrected micrograph of Top6•oligomeric Holliday junction DNA•AMPPNP sample

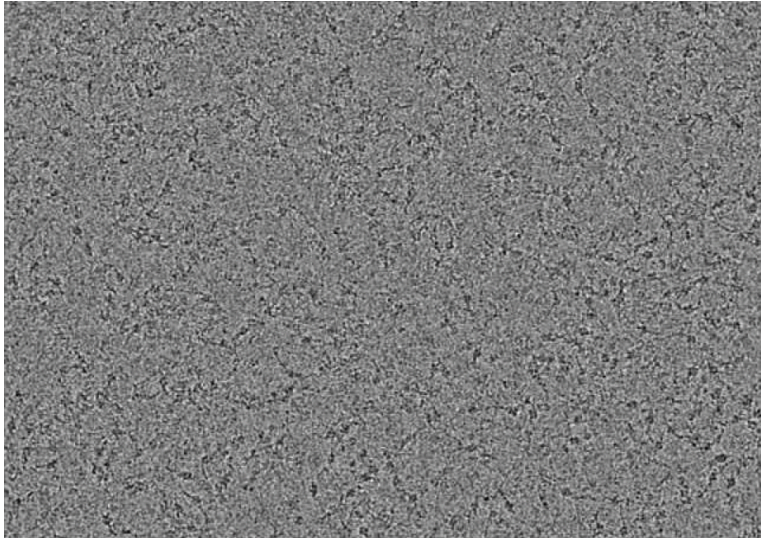


Figure 3A. 2D classes from Top6-minicircle DNA dataset

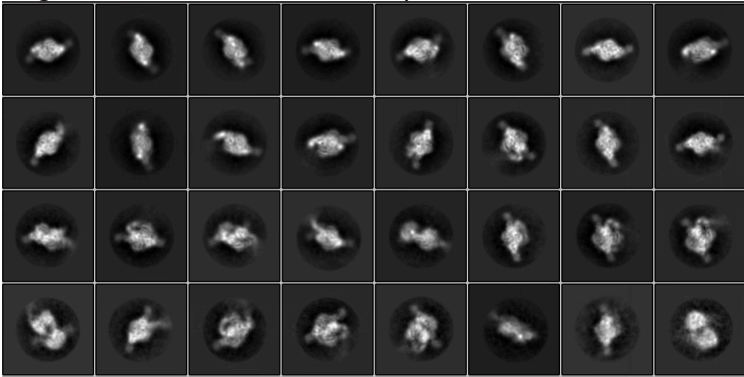


Figure 3B. 2D classes from Top6-junction DNA dataset

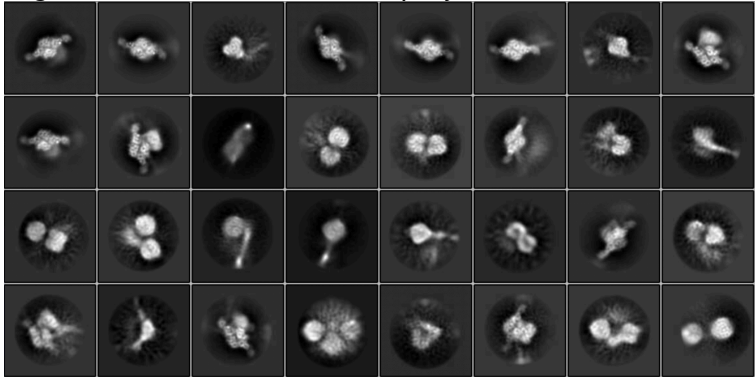


Figure 3C. Map from Top6-minicircle DNA dataset

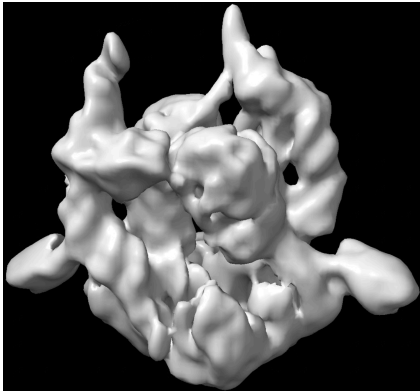


Figure 3D. Map from Top6-junction DNA dataset

