

Figures and Preliminary results

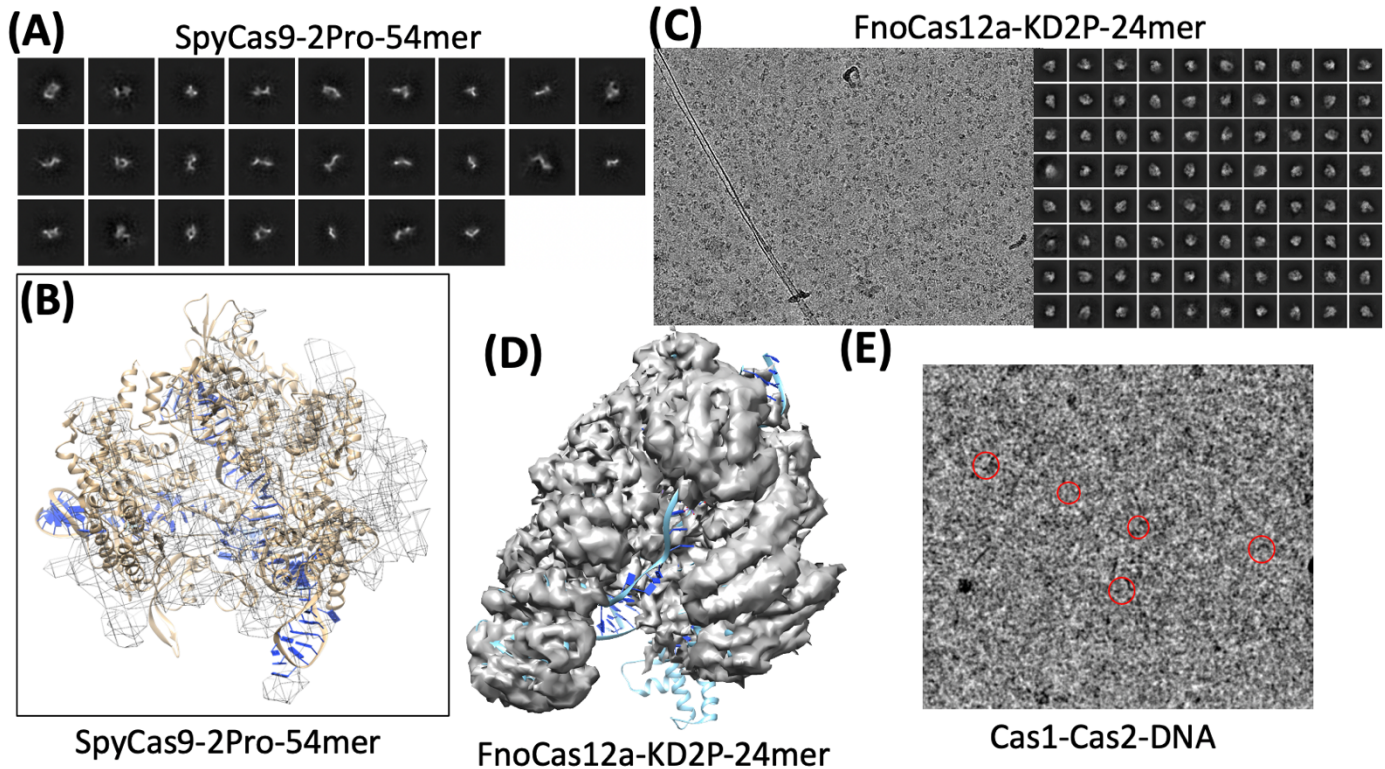


Figure 1. Preliminary results. (A) Representative 2D classes for the SpyCas9-2Pro^{1,2}-gRNA-54-mer DNA data collected during the NCCAT-TP1 visit. (B) Initial map volume fit with a model (PDB ID: 4OO8)³. (C) Micrograph showing distribution of FnoCas12a-KD2P⁴-gRNA-DNA complex on GO-coated quantifoil grid. 2D classification of FnoCas12a-KD2P⁴-crRNA-DNA particles is also shown. Data was collected at SLAC. (D) The *ab-initio* volume map generated for the complex fit with PDB ID: 5NFV,⁵ and it exhibits the expected crab-claw feature. (E) Micrographs showing the distribution of Cas1-Cas2-DNA complex purified using our established methods⁶ on a quantifoil grid. The particles possess elongated morphology similar to an available structure from an ortholog (e.g., PDB ID: 5XVN)⁷.

References Cited:

1. Babu, K., ..., Qin, P.Z. & Rajan, R. Bridge helix of Cas9 modulates target DNA cleavage and mismatch tolerance. *Biochemistry* **58**, 1905-1917 (2019).
2. Babu, K., Kathiresan, V., ... Qin, P.Z. & Rajan, R. Coordinated actions of Cas9 HNH and RuvC nuclease domains are regulated by the bridge helix and the target DNA sequence. *Biochemistry* **60**, 3783-3800 (2021).
3. Nishimasu, H., *et al.* Crystal structure of Cas9 in complex with guide RNA and target DNA. *Cell* **156**, 935-49 (2014).
4. Parameshwaran, H.P., ... Rajan, R. The bridge helix of Cas12a imparts selectivity in *cis*-DNA cleavage and regulates *trans*-DNA cleavage. *FEBS Lett* **595** (7), 892-912 (2021).
5. Swarts, D.C. and Jinek, M. Structural basis for guide RNA processing and seed-dependent DNA targeting by CRISPR-Cas12a. *Mol. Cell* **66**, 221-233.e4 (2017).
6. Van Orden, M.J., Newsom, S. & Rajan, R. CRISPR type II-A subgroups exhibit phylogenetically distinct mechanisms for prespacer insertion. *J Biol Chem* **295**, 10956-10968 (2020).
7. Xiao, Y. *et al.* How type II CRISPR-Cas establish immunity through Cas1-Cas2-mediated spacer integration. *Nature* **550**, 137-141. (2017).