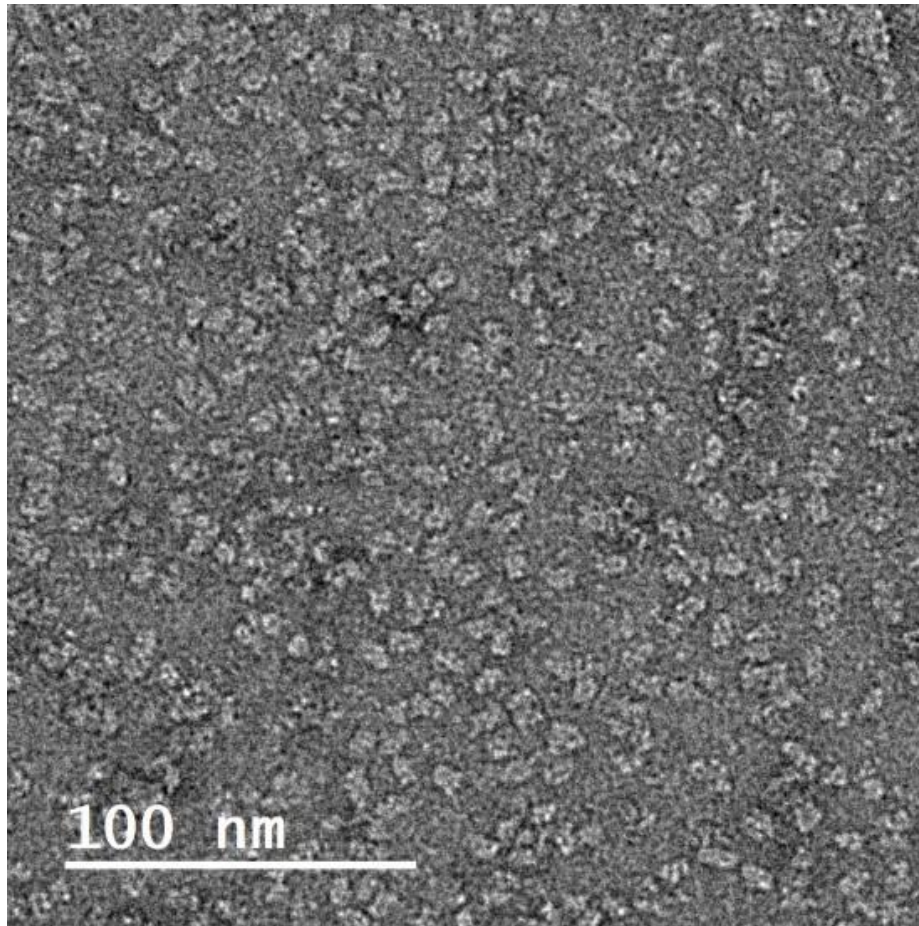
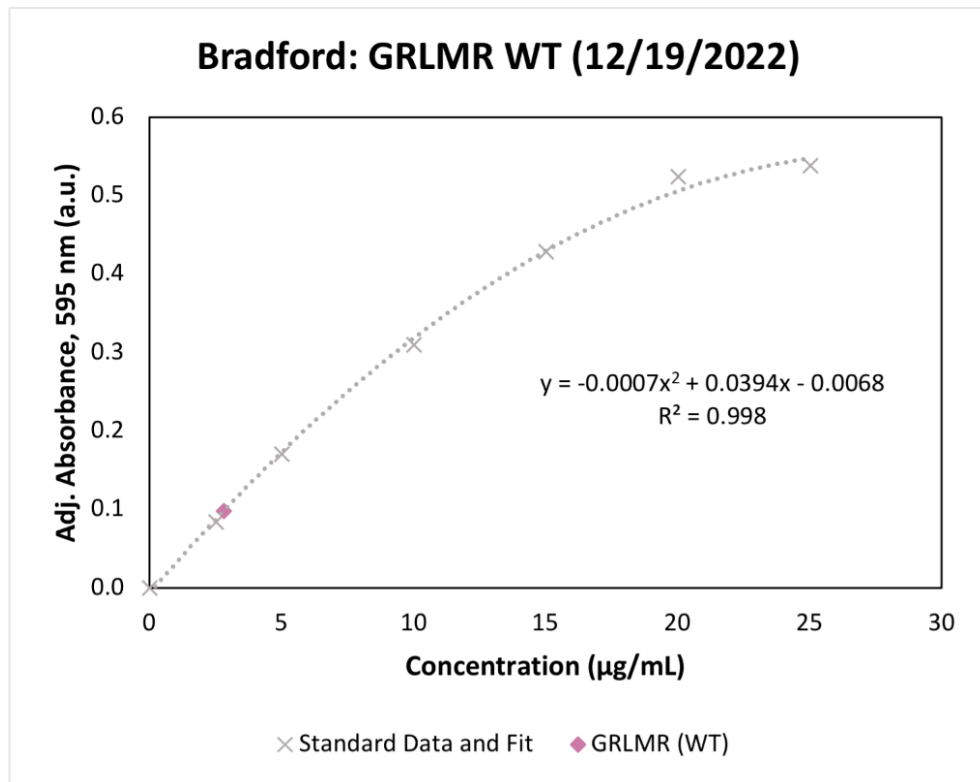


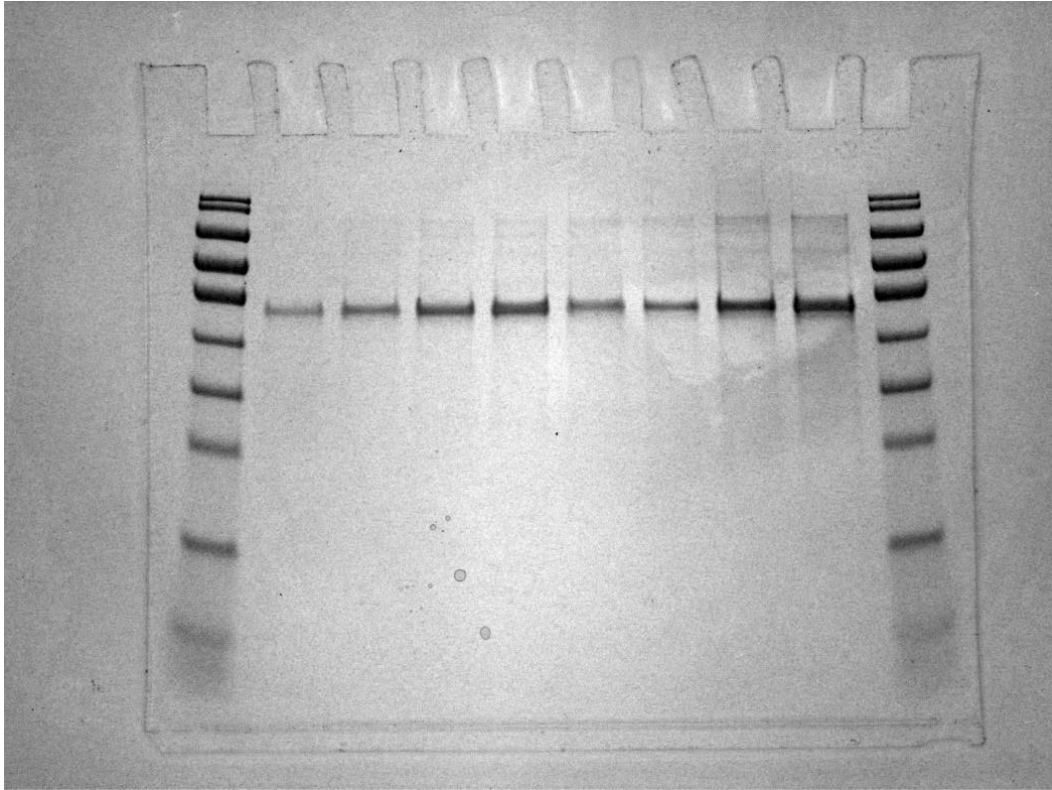
*Figure 1. Negative stained (2% UA) GRLMR WT (0.1 mg/mL) imaged in JEOL 2100F TEM with Gatan Ultrascan CCD camera on negatively glow discharged 200 mesh carbon support copper grids*



*Figure 2. Negative stained (2% UA) GRLMR WT (0.1 mg/mL) imaged in JEOL 2100F TEM with Gatan Ultrascan CCD camera on negatively glow discharged 200 mesh carbon support copper grids*



*Figure 3. Example Bradford Assay from GRLMR WT expression and purification; ~3.8 mg/mL is typical for our purifications.*



*Figure 4. SDS-PAGE gel of purified GRLMR WT (lanes 6 thru 9) at (2  $\mu$ g -5  $\mu$ g). Ladders are in the 1st and last lane. Primary bands in each lane correspond to (1) copy of the protein, additional bands correspond to 2x or 4x monomers. Lane 1: Ladder, Lane 2: 2  $\mu$ g GRLMR (alanine mutant), Lane 3: 3  $\mu$ g GRLMR (alanine mutant), Lane 4: 4  $\mu$ g GRLMR (alanine mutant), Lane 5: 5  $\mu$ g GRLMR (alanine mutant), Lane 6: 2  $\mu$ g GRLMR WT, Lane 7: 3  $\mu$ g GRLMR WT, Lane 8: 4  $\mu$ g GRLMR WT, Lane 9: 5  $\mu$ g GRLMR WT, Lane 10: Ladder*