

Fig. 1 Assembly of a GABA(B)-Go complex.
a. Size exclusion chromatography profile.
b. SDS PAGE of peak fraction.

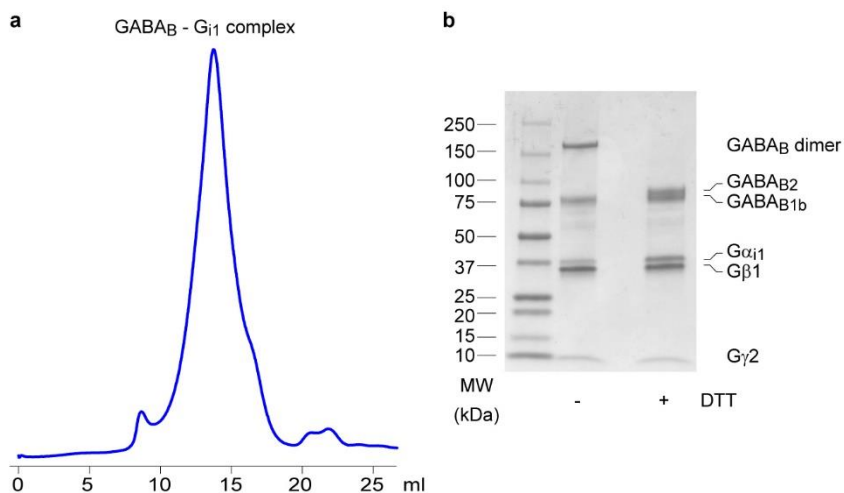


Fig. 2 Assembly of a GABA(B)-Gi complex.
a. Size exclusion chromatography profile.
b. SDS PAGE of peak fraction. The GABA(B)-receptor construct contains an engineered disulfide bond that locks the receptor in an active conformation.