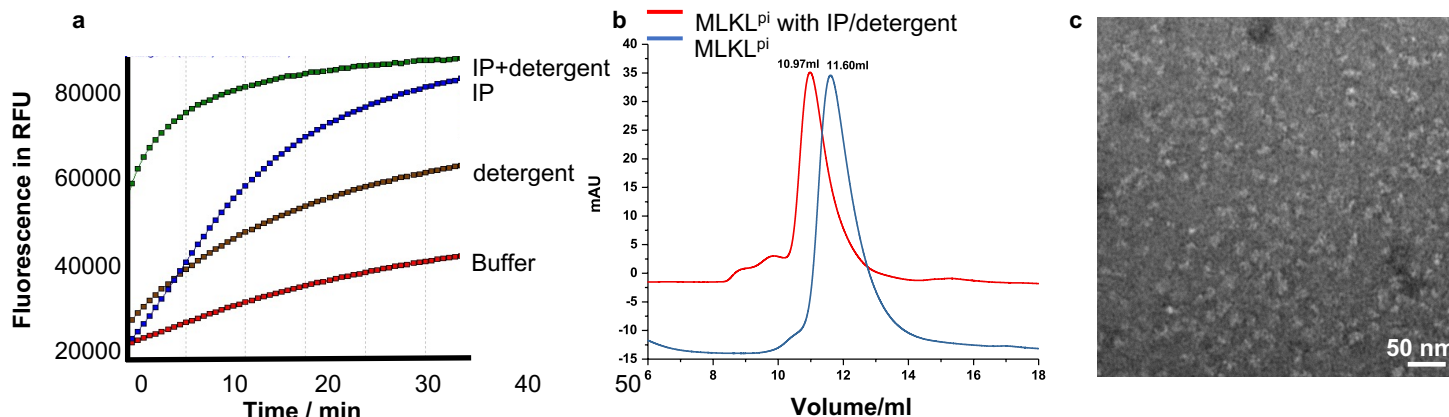
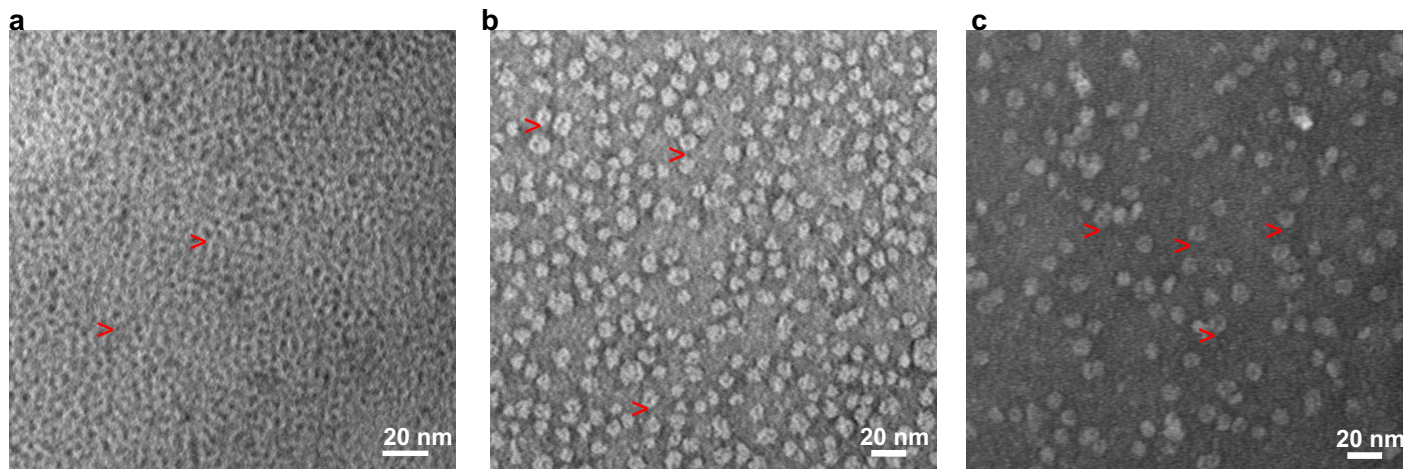


**Figure 1. The MLKL phosphomimic mutant (MLKL<sup>pi</sup>) forms a tetramer.** (a) MLKL<sup>pi</sup> (55 kDa) was eluted at 11.6 ml from size exclusion column Superdex 200 increase 10/300GL with an estimated molecular weight about 220 kDa, indicating the tetrameric form of MLKL<sup>pi</sup>. (c) A negative stain EM image of MLKL<sup>pi</sup> tetramer.



**Figure 2. Inositol Phosphate (IP) bound MLKL pre-pore.** (a) Pore-forming activity of MLKL phosphomimic mutant MLKL<sup>pi</sup> is enhanced by IP. (b) IP and detergent triggers the oligomerization of MLKL<sup>pi</sup>. (c) An example of negative stain EM image of MLKL<sup>pi</sup> in complex with IP in the presence of detergent.



**Figure 3. Reconstitution of MLKL pore.** (a) MLKL forms pores on liposome. (b) A negative stain EM image of detergent solubilized MLKL pores. (c) A negative stain EM image of MLKL pores reconstituted on nanodiscs. MLKL forms ring-like structures on liposomes, in detergent, and in nanodisc lipid bilayers.