

Figure 1: Cryo-EM data of RAD52 collected at PNCC (project ID 51258). A) Representative 2D classifications of RAD52. B) Plot of Fourier shell correlations resolution and C) X-ray crystal structure of N-terminal domain of RAD52 (PDB 5JRB at 2.4 Å) fitted to Cryo-EM density map (2.65 Å).

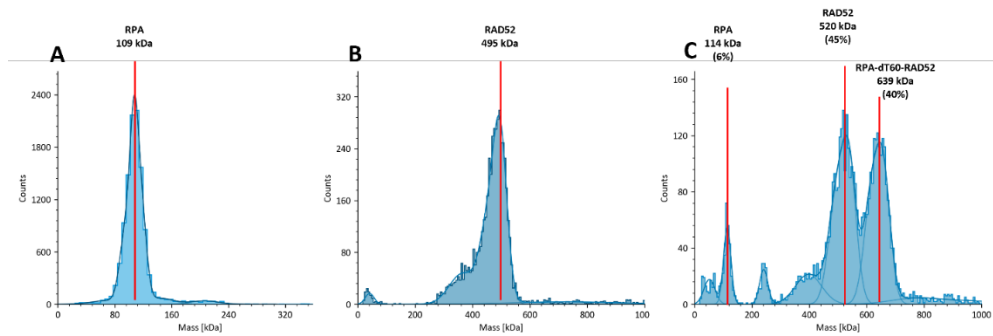


Figure 2) Mass photometry data for RAD52-dT60-RPA complex. A) RPA (25 nM) B) RAD52 (100 nM) and C) RPA-dT60-RAD52. The theoretical molecular weights of RPA, dT60 and RAD52 (11 mer) are 111, 18.2 and 532 kDa.

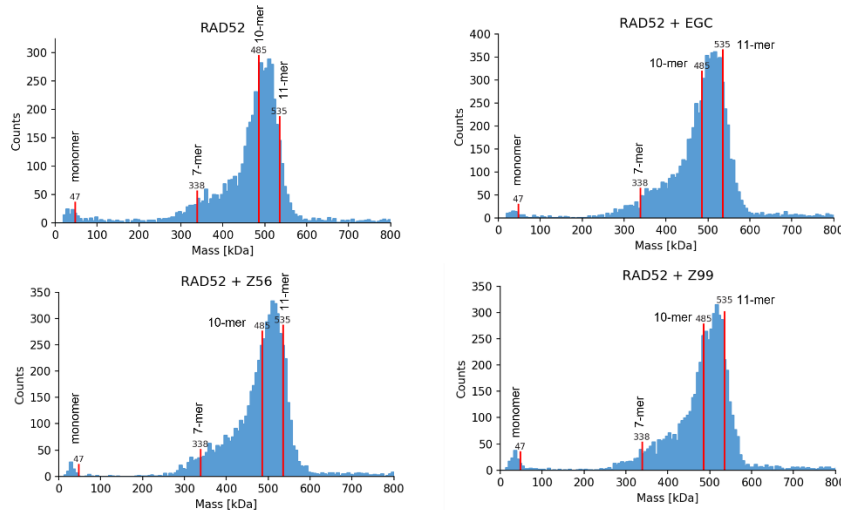


Figure 3) The mass photometry data of RAD52 in the presence of identified inhibitors in our lab. RAD52 (6.5 μM) incubated with inhibitors EGC, Z56 and Z99 (500 μM) for 5 minutes in buffer of 20 mM Tris pH 7.5, 150 mM KCl, 1 mM DTT.