

Figure 1. Preliminary data of EMSA showing DS interacts with both EBNA1 FL (left), and EBNA1 401-641 (right). Adding TRF1 could help the EBNA1 interaction with DS.

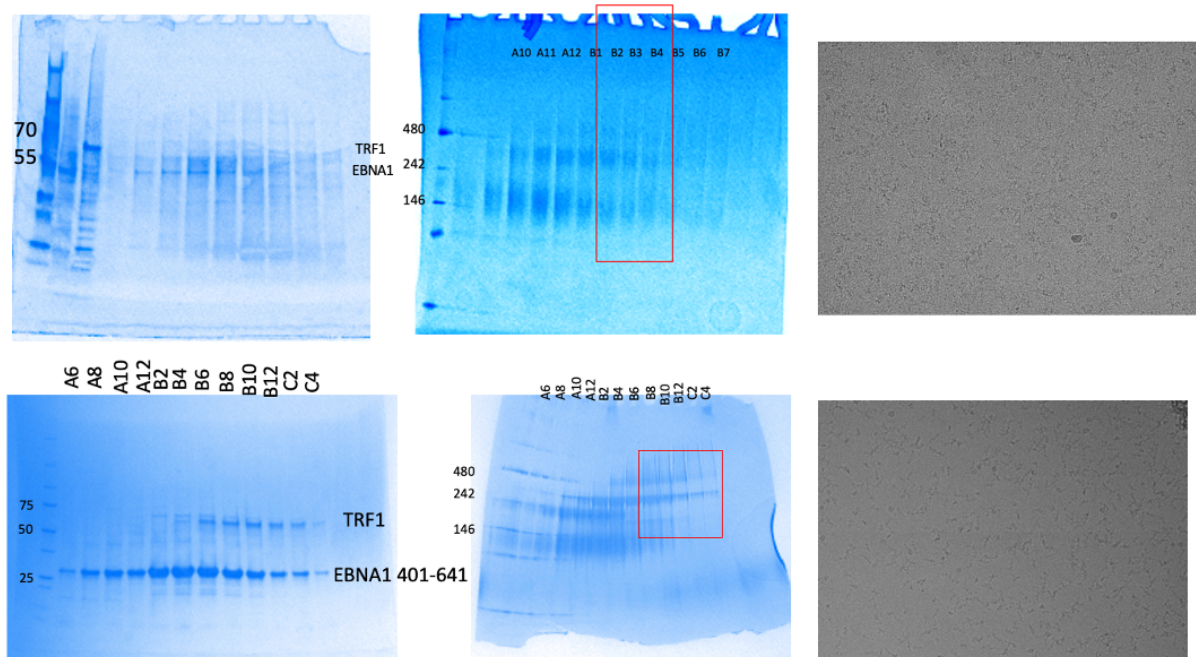


Figure 2. Preliminary data of DS with EBNA1 FL (top), EBNA1 401-641 (bottom). Left: SDS-PAGE of fractions collected from gradient centrifugation (10%-30% glycerol, without fixation); Middle: Native gel of fractions collected from gradient fixation (left), fractions used for further EM analysis are labeled with red box. Right: CryoEM of fractions from red box.

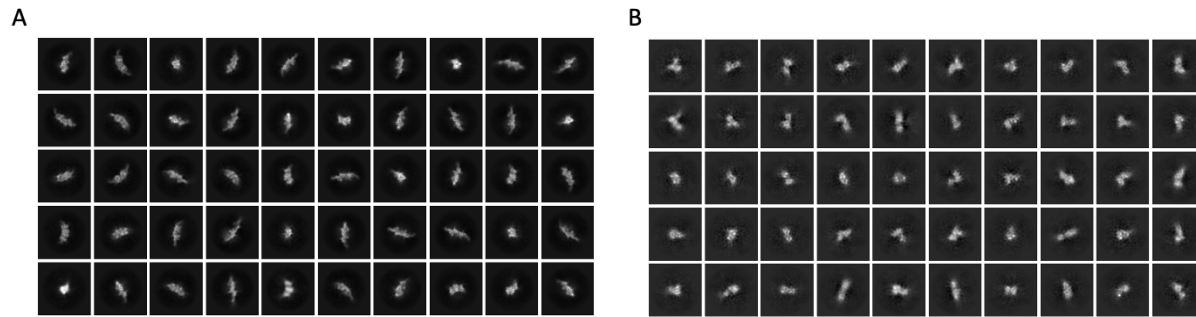


Figure 3. Preliminary data of 2D map for (A) EBNA1 401-641+TRF1+DS and (B) EBNA1 FL+TRF1+DS

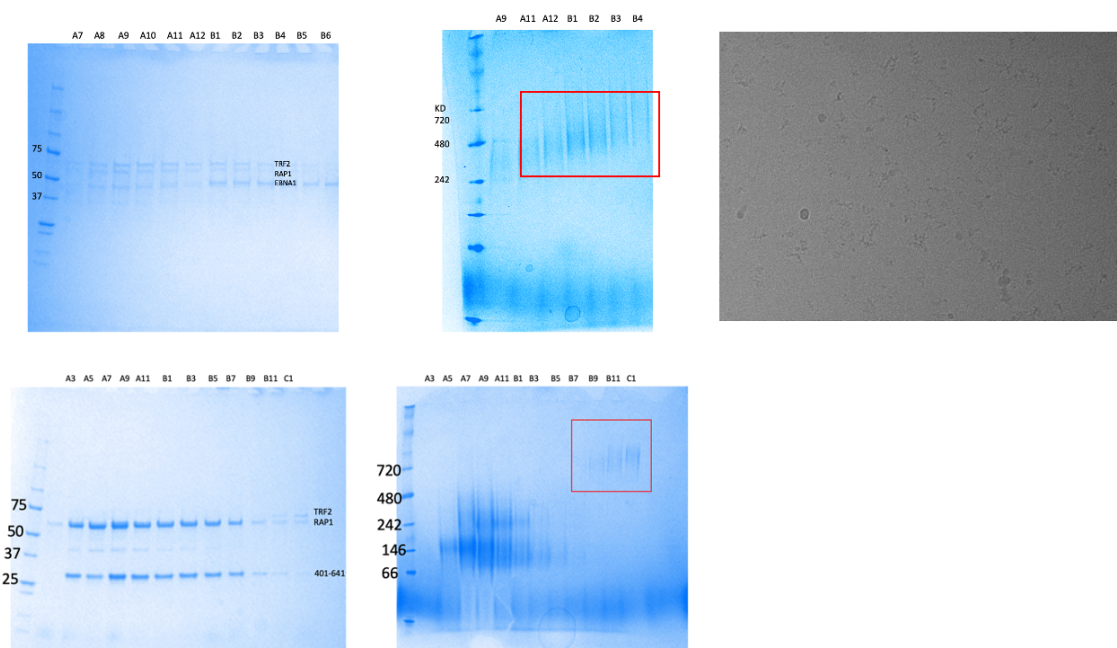


Figure 4. Preliminary data of TRF2, RAP1 and DS with EBNA1 FL (top), EBNA1 401-641 (bottom). Left: SDS-PAGE of fractions collected from gradient centrifugation (10%-30% glycerol, without fixation); Middle: Native gel of fractions collected from gradient fixation (left), fractions used for further EM analysis are labeled with red box. Right: CryoEM screening image of fractions from red box.

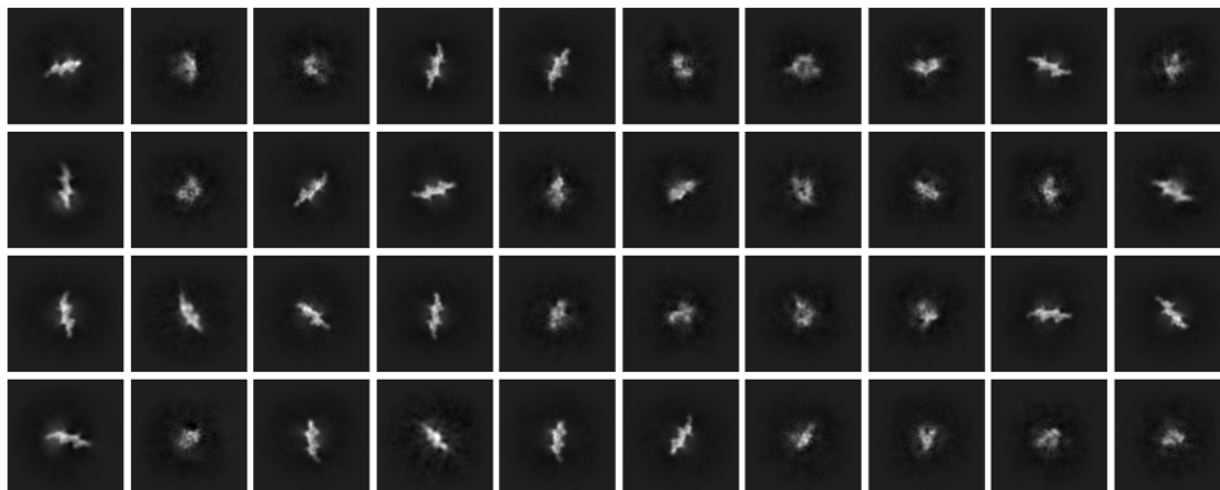


Figure 5. Preliminary data of 2D map for EBNA1 FL+TRF2+RAP1+DS

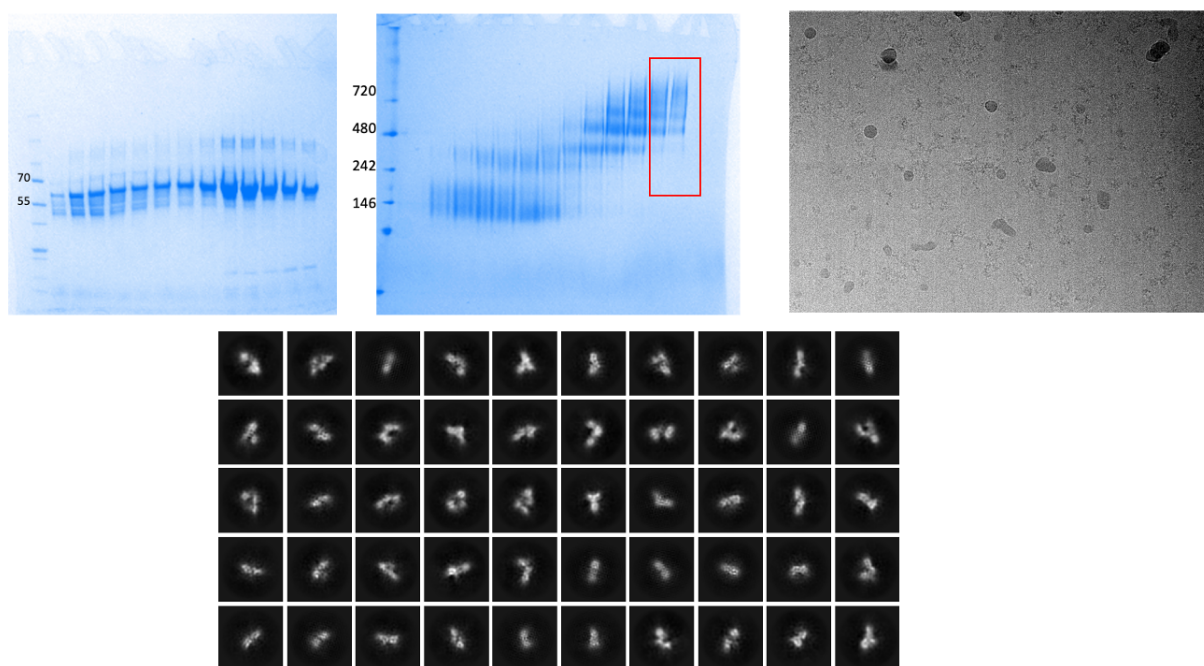


Figure 6. Preliminary data of TRF1 and telomeric repeat DNA. Top left: SDS-PAGE of fractions collected from gradient centrifugation (10%-30% glycerol, without fixation); Top middle: Native gel of fractions collected from gradient fixation (left), fractions used for further EM analysis are labeled with red box. Top right: CryoEM screening image of fractions from red box. Bottom: 2D map