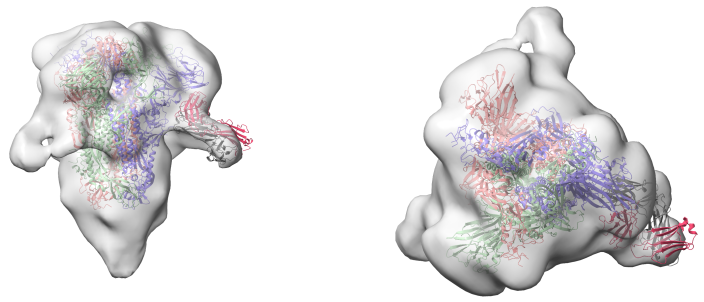
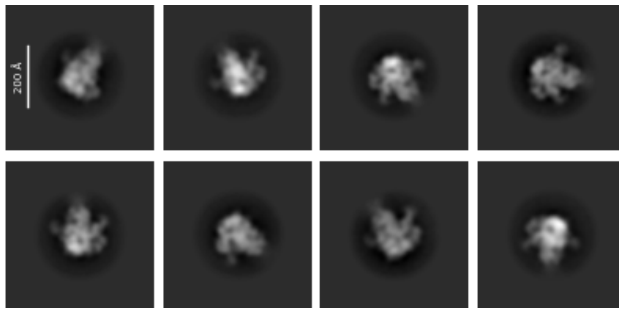
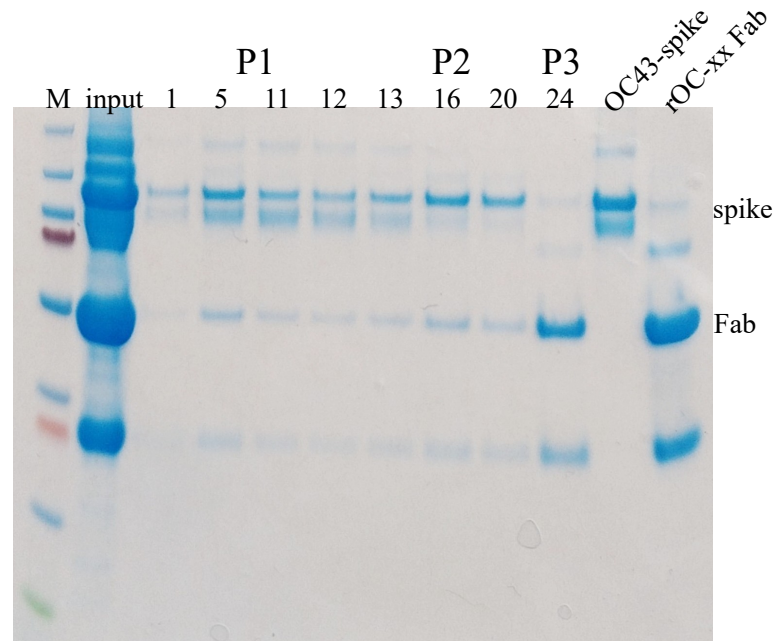
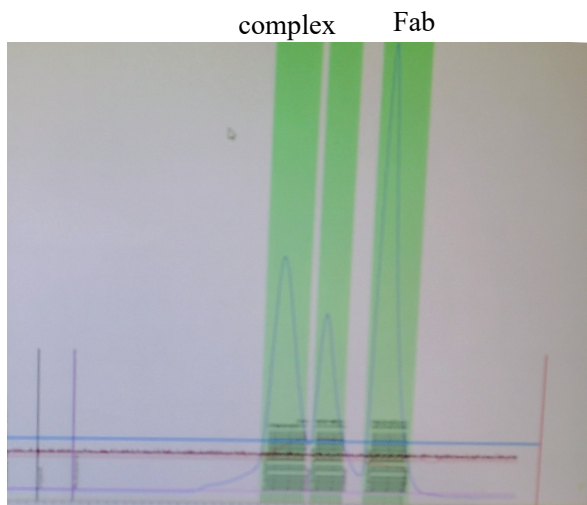


OC43-2P spike Fabxx

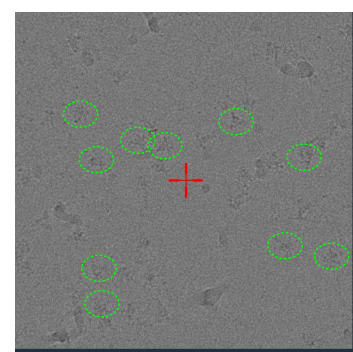
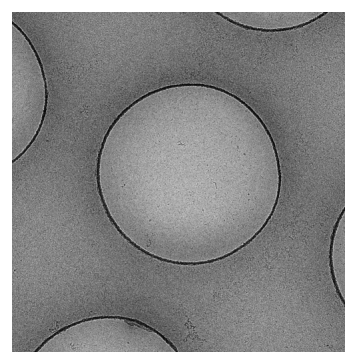
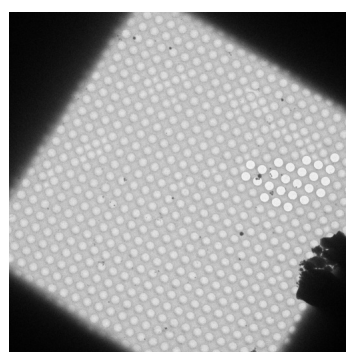
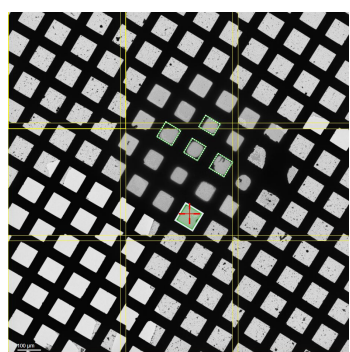
A. nsEM



B. SEC



C. CryoEM



- A. nsEM of OC43 in complex with Fab. 2D classes and 3D map with fitted model of spike and Fab.
B. Purify the complex by GF. Chromatogram and SDS-PAGE of the peak fractions.
C. cryoEM screening of the plunge sample after the GF.