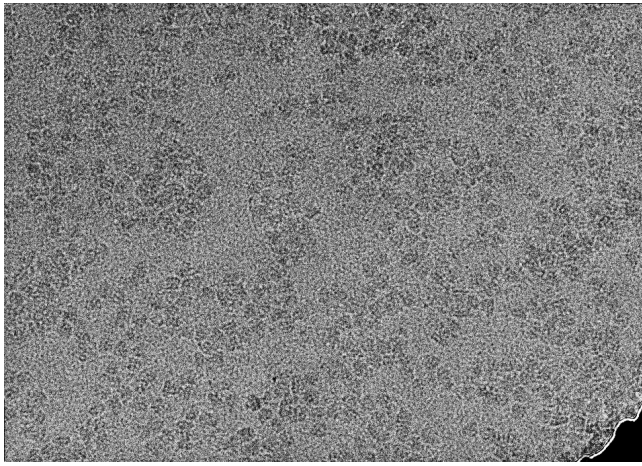
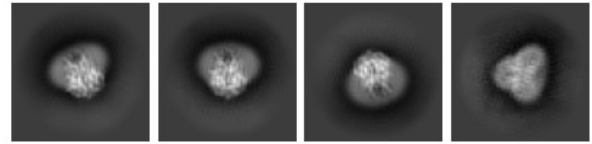


A

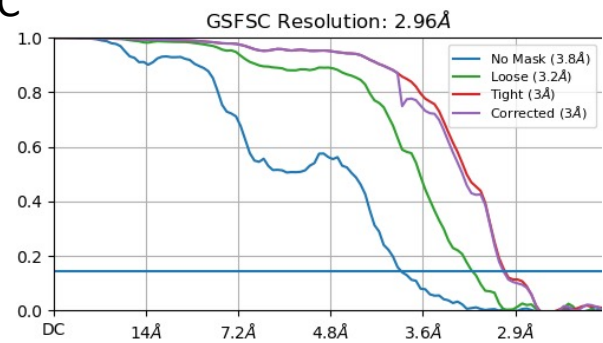


Consensus on-the-fly refinements
Hydrophobic gate (neck)

B

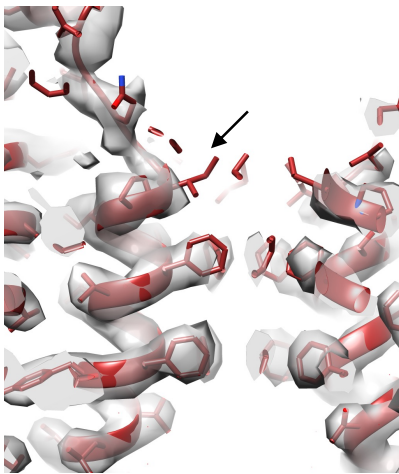


C



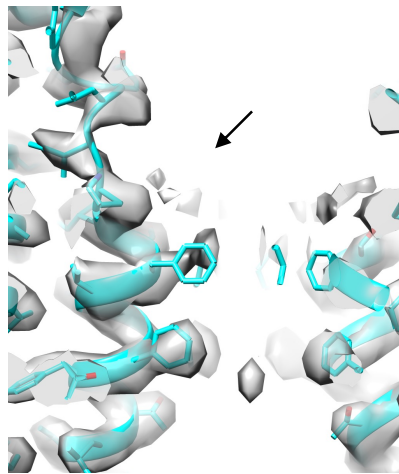
D

Negative
(closed)



E

Positive
(intermediate open)

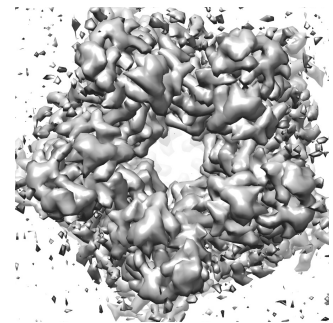


F

3D classification

Open

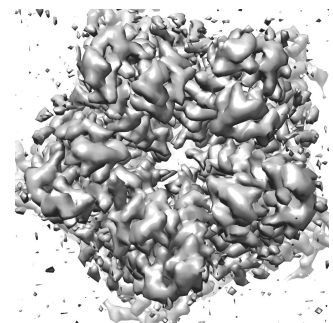
41,771 particles (18%)



G

Closed

189,238 particles (82%)



- A) Representative micrograph from Krios
- B) Representative 2D classes
- C) FSC curve for the 3D consensus refinement of a "positive hit" processed on-the-fly
- D) Example of negative consensus refinement
- E) Example of positive hit consensus refinement demonstrating heterogeneity within the neck gate
- F) 3D classification separates the first open state (18%) of a wild-type human Best1 channel
- G) 3D classification separates the 82% closed class