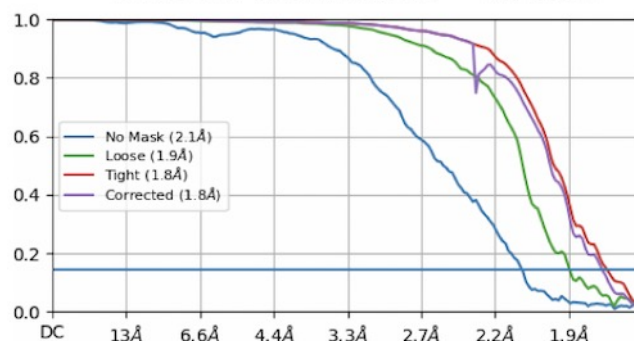


a

1 μM Ca^{2+} closed
399,281 particles
GSFSC Resolution = 1.78 Å



b

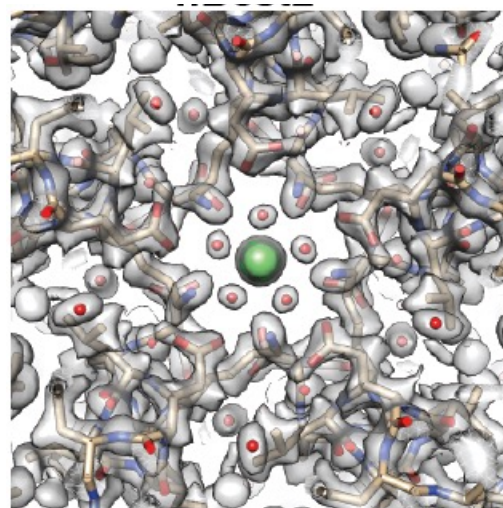
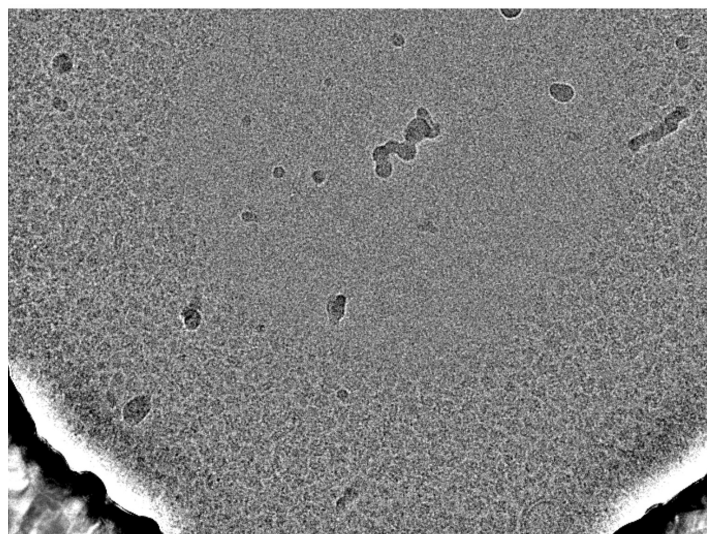


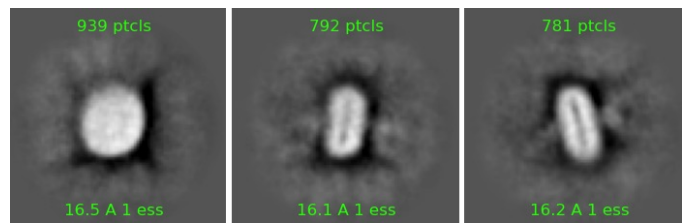
Figure 1 – a) FSC curve and b) anion-selective gate for human Bestrophin-2.

a

90 mics



b



c

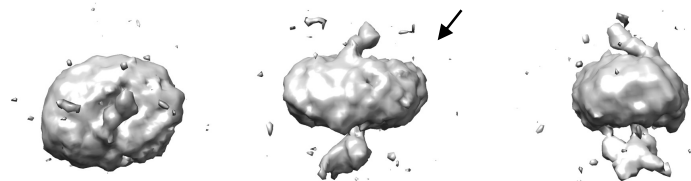
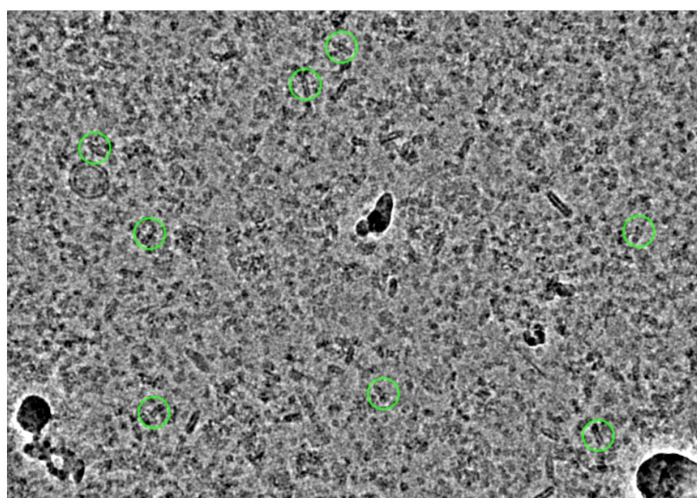


Figure 2 – a) CryoEM micrograph, b) 2D class averages for particle of interest, c) density with black arrow on micelle for Ca^{2+} -responsive membrane protein derived from cow brain.

a



b

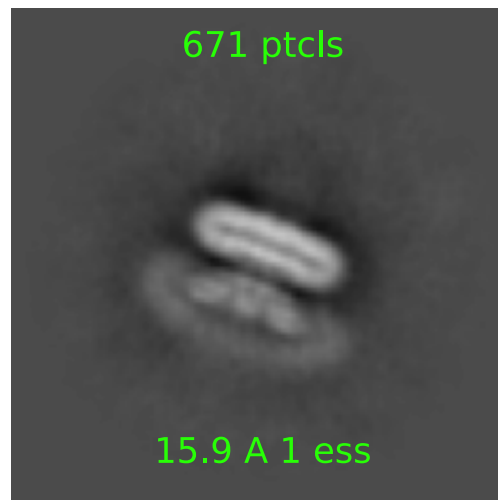


Figure 3 – a) CryoEM micrograph with circled particle picks and b) 2D class averages for Ca^{2+} -dependent membrane protein derived from rat brain.