

Figure 1. Localized reconstruction of the bacteriophage Sf6 unique vertex visualized the structure of the portal protein in situ at 2.8 resolution. Cryo-EM data were collected at NCI/Fredericks

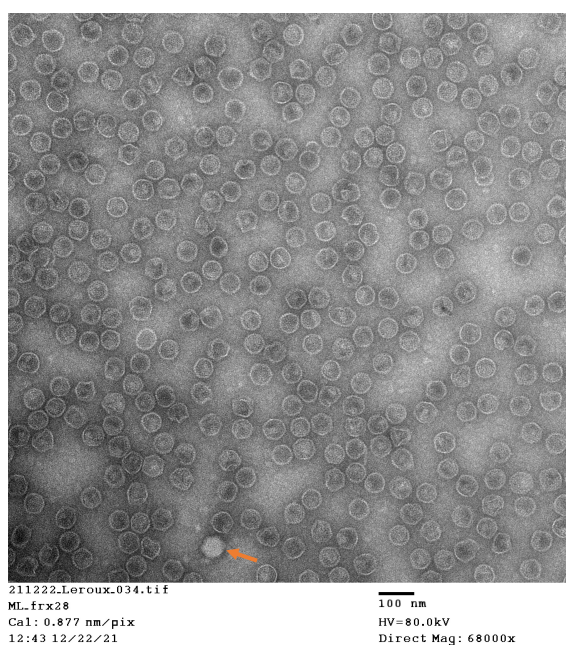


Figure 2. Negative stained P22 gp4 minus particles. The orange arrow points to the sole residual phage on the micrograph. The remaining particles are the size of the phage head but are empty.

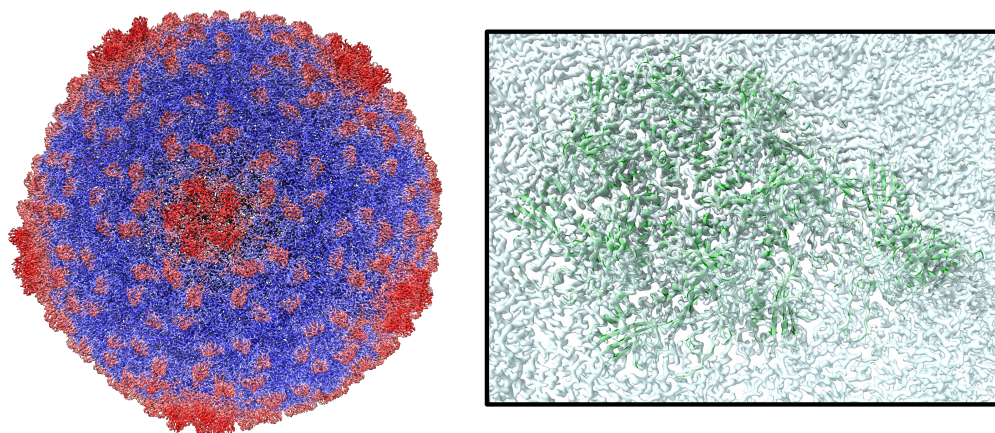


Figure 3. Left: An electron density map of the phage CUS-3 capsid at 2.8 Å resolution. Right: a zoomed-in image of the map showing the model (green) of the capsid asymmetric unit.