

Supplementary information of

Elucidation of molecular structure and mechanism of GluN3A-containing NMDA receptors

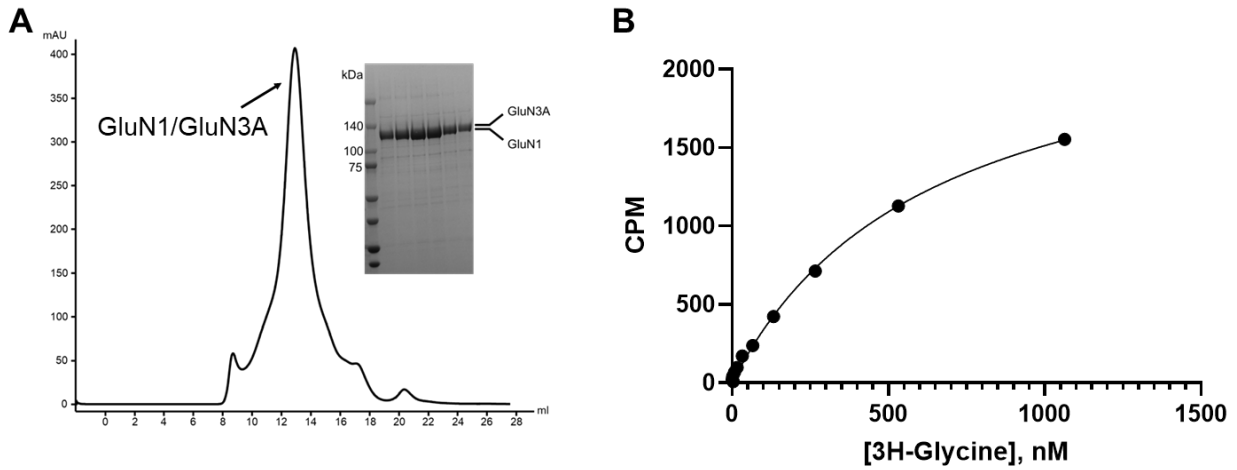


Fig. 1. (A) Size-exclusion chromatography profile of the GluN1/GluN3A receptor along with analysis of the purified receptor by SDS-PAGE (inset). (B) Measurement of ligand binding activity of the purified receptor using ^3H -Glycine.

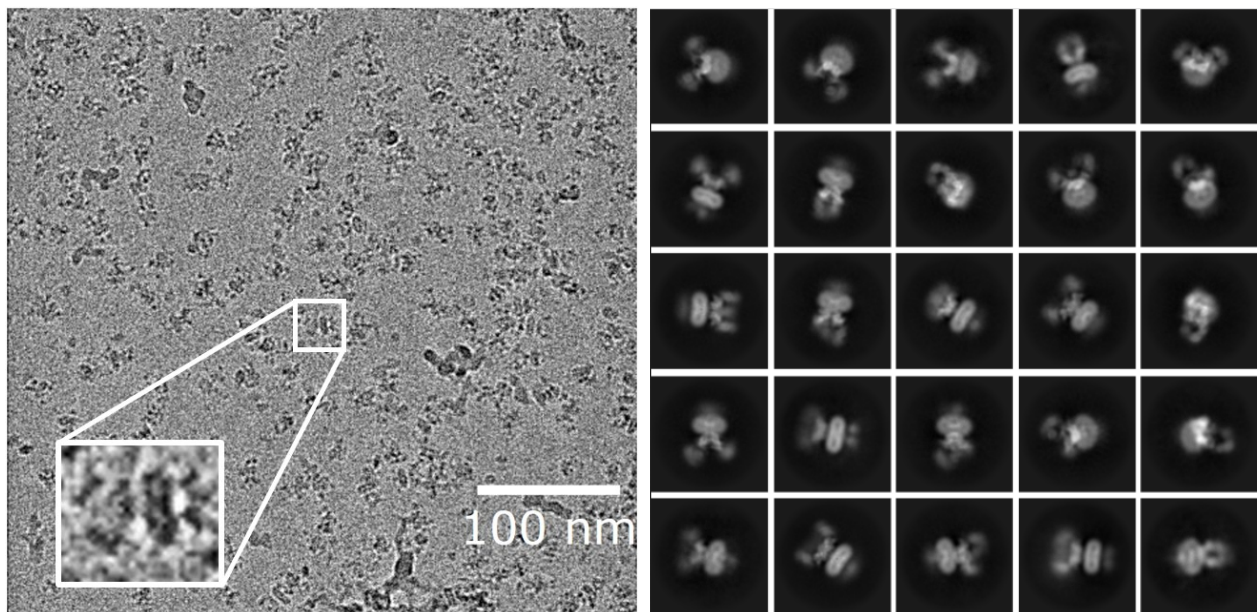


Fig. 2. A representative image and 2D-classification result of the GluN1/GluN3A receptor.

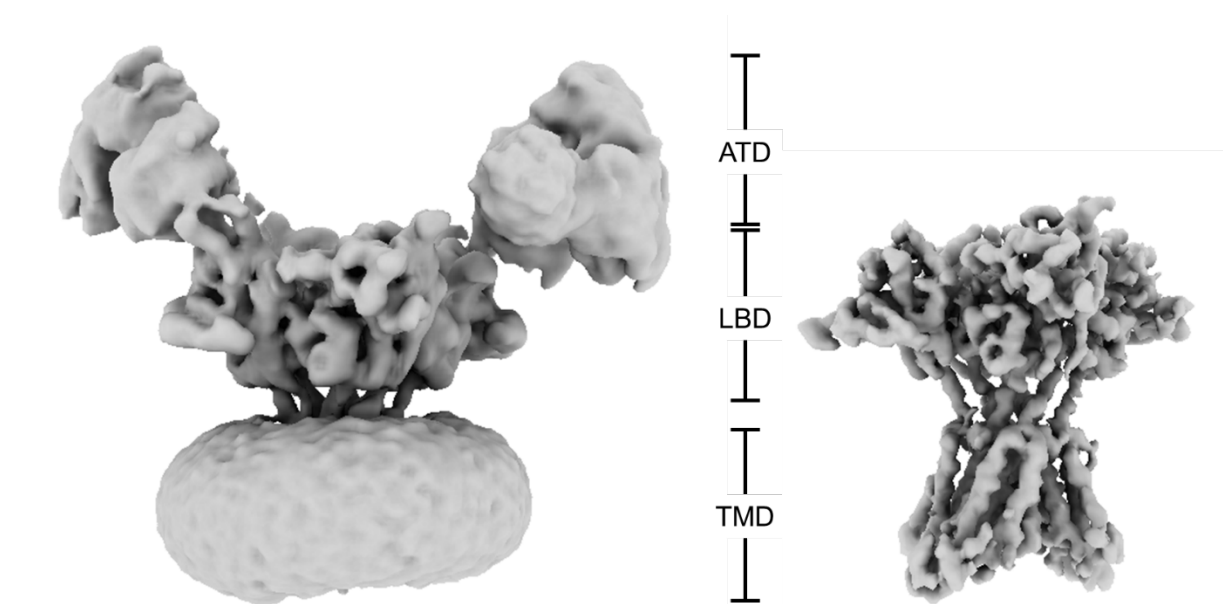


Fig. 3. Cryo-EM density of the GluN1/GluN3A receptor derived from global 3D refinement (left) and LBD-TMD focused refinement (right).