

Figure 1. A. Purity of Pol θ -pol on SDS page gel. B. Superdex 200 profile of Pol θ -pol. C-E. Biochemical activities of Pol θ -pol against normal (C), microhomology-mediated end joining (MMEJ) double-strand break substrate (D), and UV-induced CPD DNA (E).

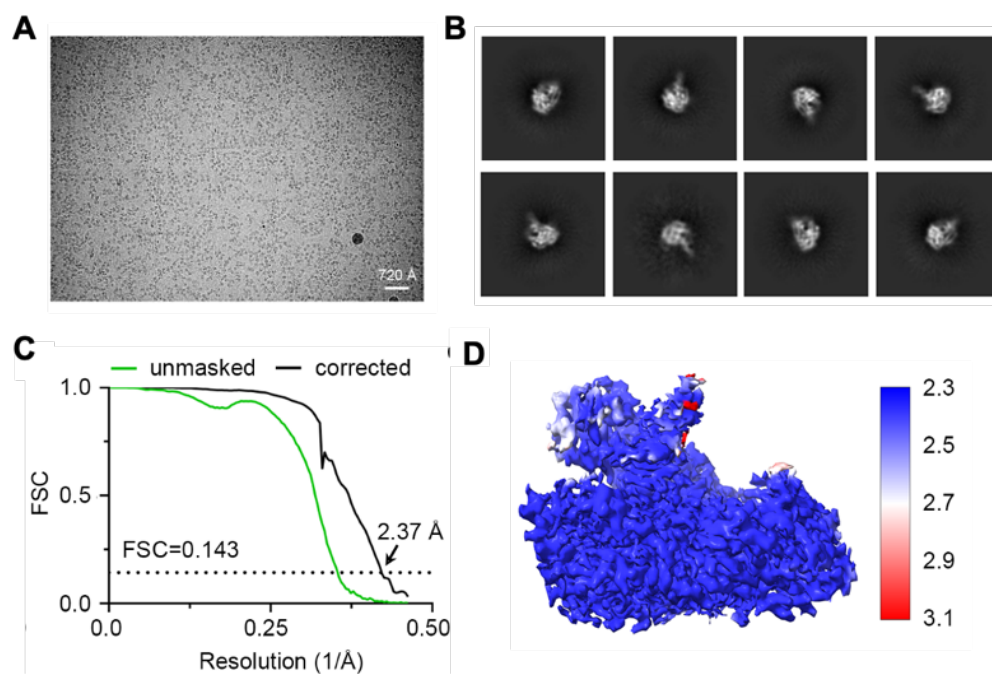


Figure 2. A. A representative micrograph at defocus of $-1.2 \mu\text{m}$. B. 2D-class averages of Pol θ -pol. C. fourier shell correlation (FSC) plot of Pol θ -pol structure. D. Local resolution.