

Figure 1. Complex formation between apo-BipA and a single site substituted BipA that mimics the GTP-bound state of the protein with the 70S ribosome assessed by filtration assays as described in Jeganathan *et al.* (2015) *RNA* **21**:1203-1216. Flow- through (FT) and bound (B) fractions were resolved on 4-12% Bis-Tris SDS-PAGE gels and visualized with Coomassie blue. On the left are the reaction mixtures contained wild-type BipA with 70S ribosomes, with and without GMPPNP. The ones on the right are with the mutant BipA protein.

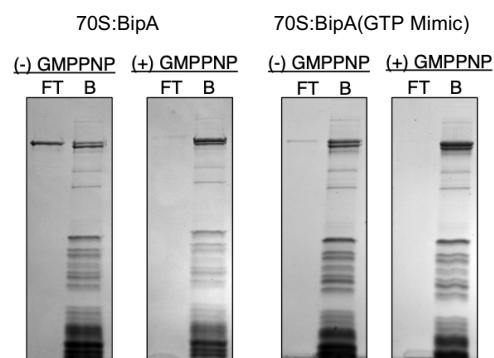


Figure 2. Representative image of ribosome reaction mixtures on cryo-EM grid with a thin carbon layer. Image acquired at NCCAT facility on Krios after screening.

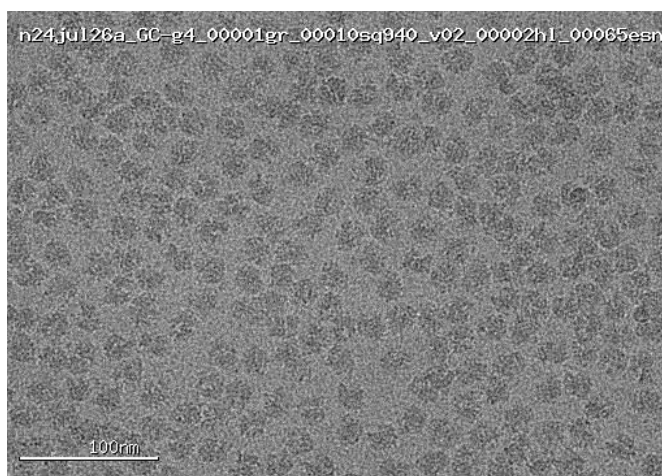


Figure 3. Electron density map, approximately 2.5 Å, representative of one of our 70S:BipA structures acquired this summer with data collected at NCCAT.

