

Aim 1: Protein Purification, Complex Reconstitution and Preliminary Imaging

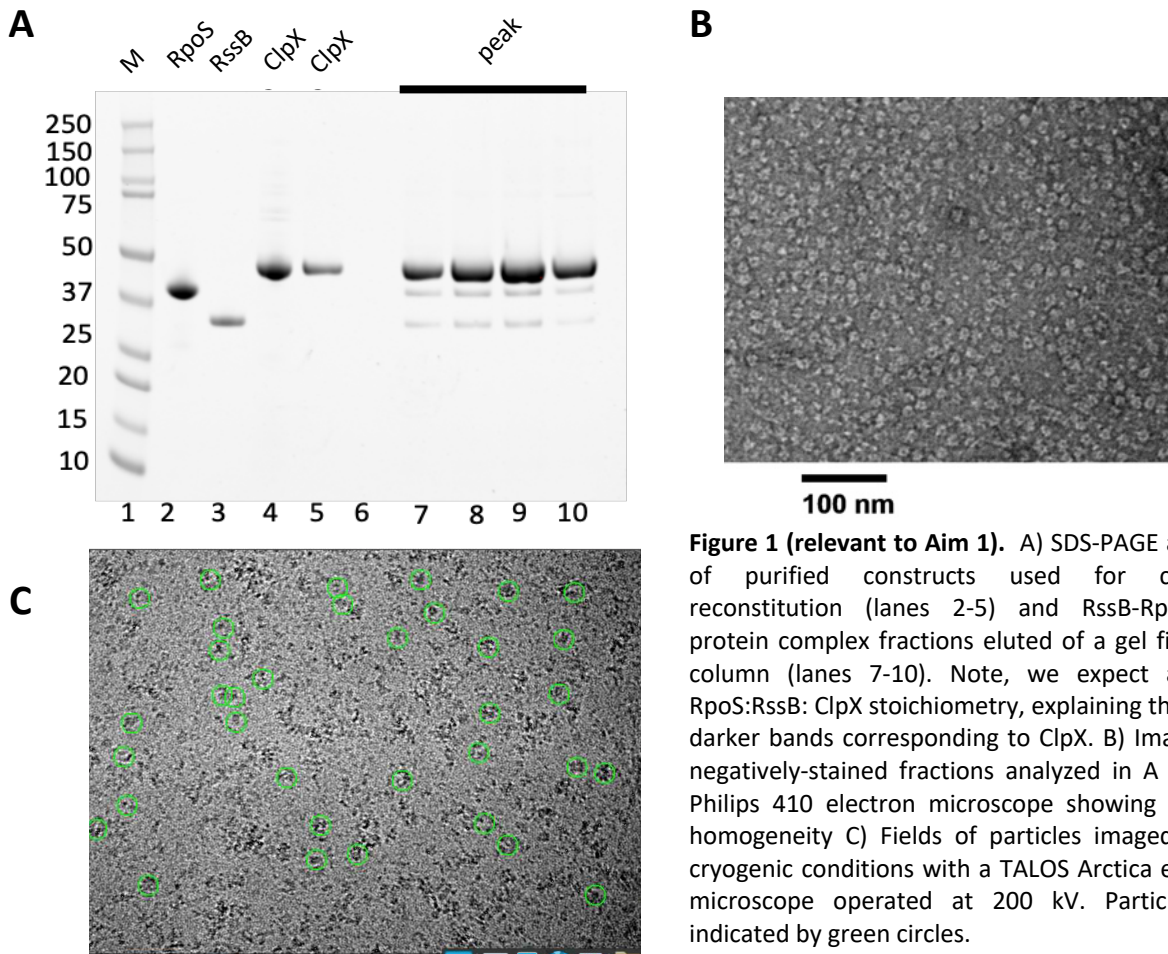


Figure 1 (relevant to Aim 1). A) SDS-PAGE analysis of purified constructs used for complex reconstitution (lanes 2-5) and RssB-RpoS-ClpX protein complex fractions eluted of a gel filtration column (lanes 7-10). Note, we expect a 1:1:6 RpoS:RssB: ClpX stoichiometry, explaining the much darker bands corresponding to ClpX. B) Imaging of negatively-stained fractions analyzed in A using a Philips 410 electron microscope showing particle homogeneity C) Fields of particles imaged under cryogenic conditions with a TALOS Arctica electron microscope operated at 200 kV. Particles are indicated by green circles.

Aim 2: Protein Purification

