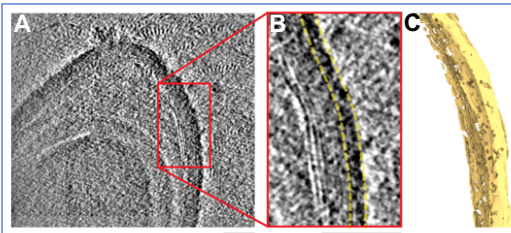


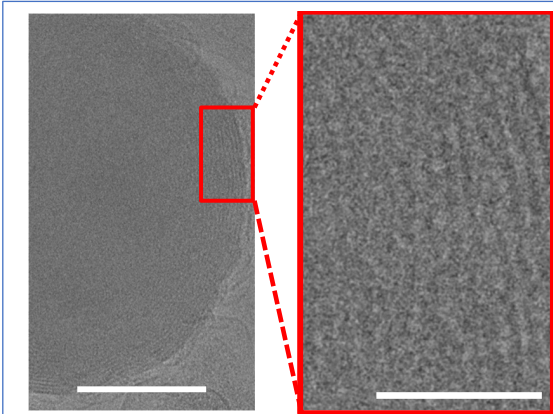
## FIGURES/PRELIMINARY RESULTS.

Our preliminary data for Aim 2 also supports feasibility.



**Figure 1.** A) Image slice from the tomogram reconstruction of *C. difficile* whole spore with a thin-exosporium layer. B) Enlarged view of the region boxed in red from panel A to show the surface layers of *C. difficile* spore. Yellow dotted lines indicate the thin exosporium layer used during the tomogram segmentation. C) Manual segmentation of the thin exosporium layer (yellow dotted lines of Panel B. The segmentation was done by using 150 tomogram slices along z-axis. Scale bars denote 100 nm.

Our preliminary Cryo-EM work confirms that CdeC self-assembles forming repetitive density patterns (lamellae-like structures) in *E. coli* (Figure 2).



**Figure 2.** Cryo micrograph of vitrified inclusion body of recombinant CdeC. Bar in Panel A: 250nm; Bar in Panel B: 50 nm