

Figure/Results:

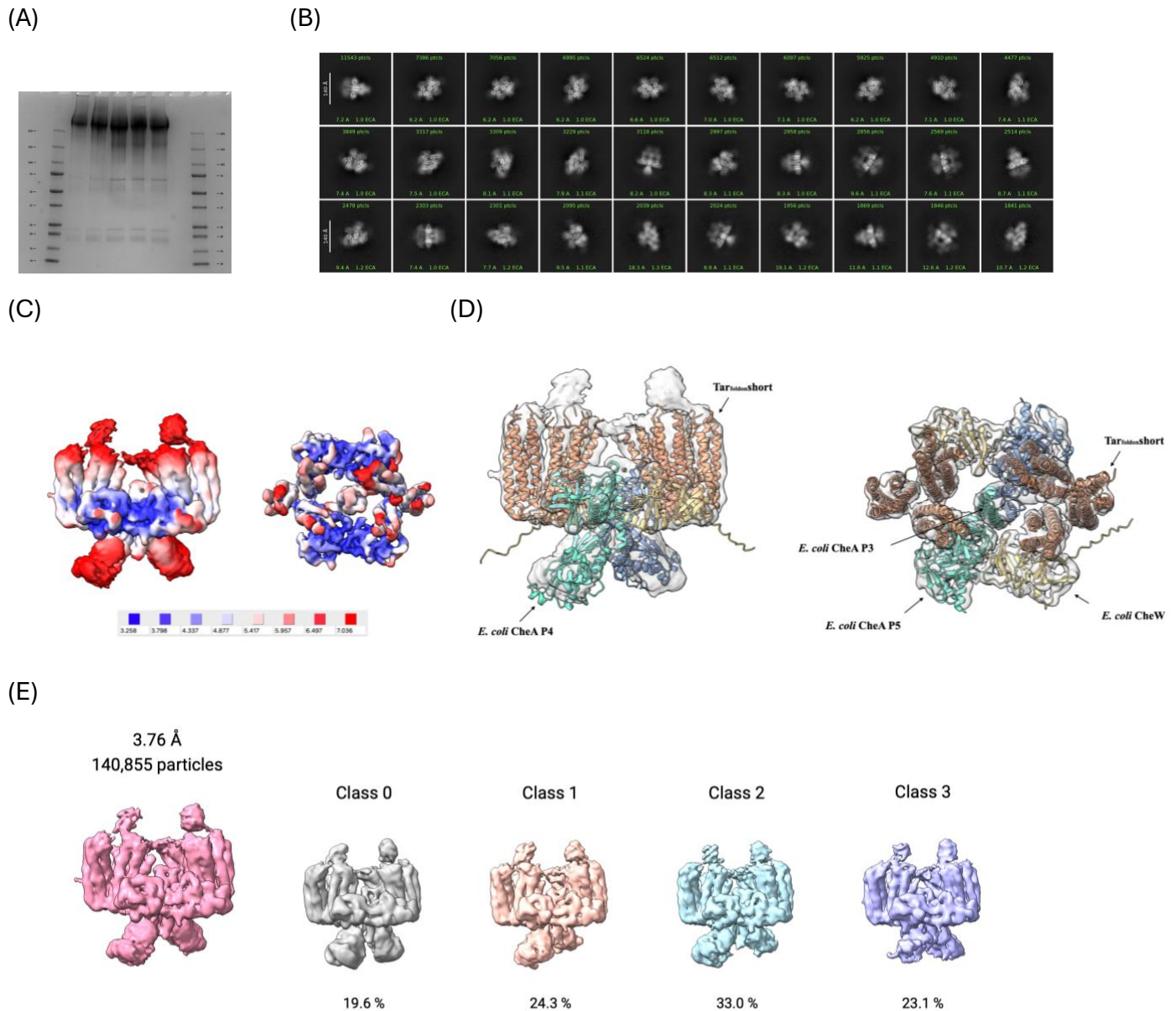
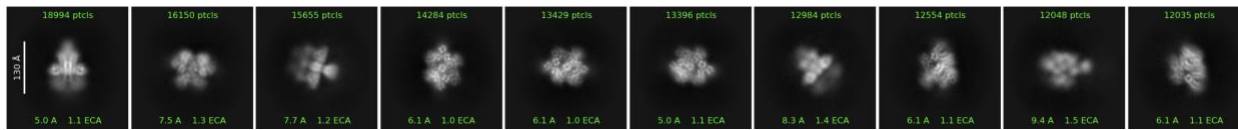


Figure 1. Tar-CheA-CheW core signaling complex in the kinase-on state incubated with ADP. (A) SDS page gel of the cross-linked core signaling complex. (B) Representative 2D classes of the *E. coli* core signaling complex with ADP from 9000 movies collected using 300 keV Krios. (C)&(D) The core signaling complex at 3.8 Å resolution superimposed with Tar_{foldOn}Short model by Muok et al. (Muok et al. *Science Signaling*, 2020) and reorientated AlphaFold predicted model of *E. coli* CheA & CheW. (E) 3D classification.

(A)



(B)

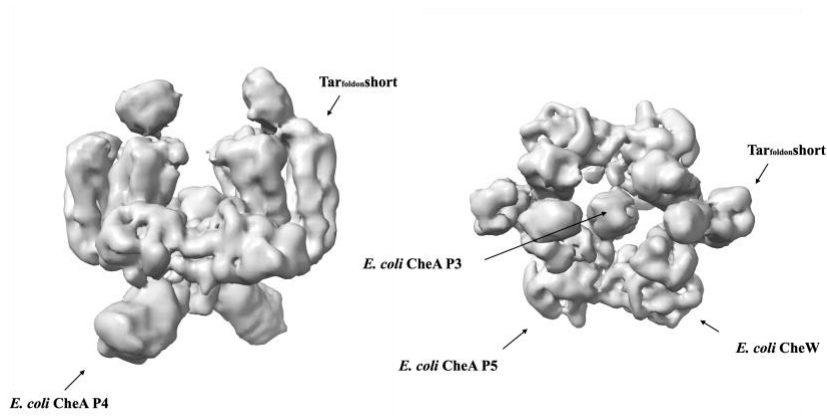


Figure 2. Tar-CheA-CheW core signaling complex in the kinase-on state incubated with AMP-PCP. (A) Representative 2D classes of the *E. coli* core signaling complex with AMP-PCP from ~5,000 movies collected using 200 keV Talos-Artica. (B) Low resolution map of core signaling complex with AMP-PCP.