

Figure 1. SDS-PAGE analysis of purified proteins

SDS-PAGE gel of Hir complex, Rtt106, and Asf1 (assembled with H3.3/H4).

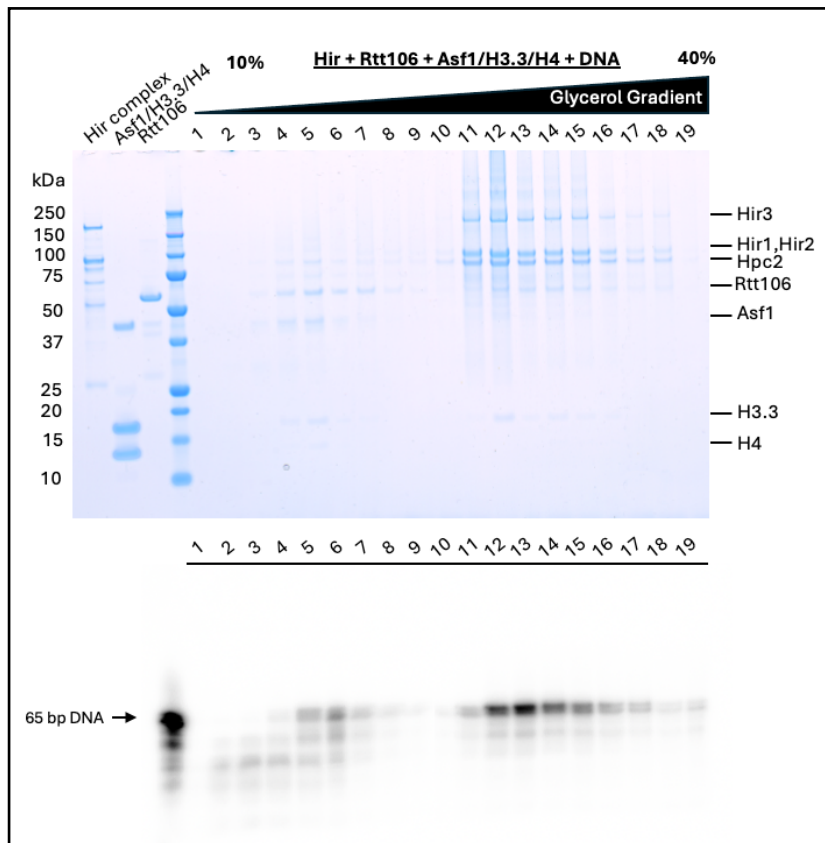


Figure 2. Glycerol gradient of Hir: Asf1/H3.3/H4: Rtt106: DNA

Isolation of the assembled higher-order complex with DNA. The top gel visualizes protein bands after fractionation and the bottom gel visualizes P32-labeled DNA after fractionation. Cryo-EM samples were fixed by GraFix.

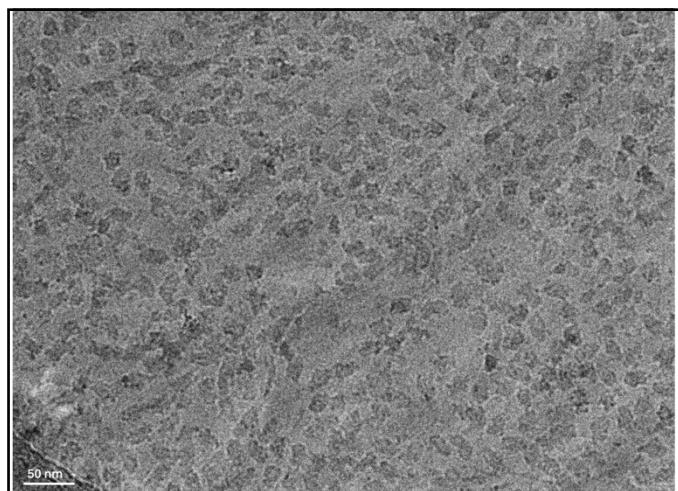


Figure 3. Cryo-EM images taken during screening session on Glacios

Representative raw micrograph of isolated Hir:Rtt106:Asf1/H3.3/H4:DNA sample.