

Fig. 1. NS-EM micrographs and classes of PARP1-DNA (a) and PARP1-DNA-HPF1 (b). Particles were extracted in 264 Å boxes and classified with a 180 Å mask.

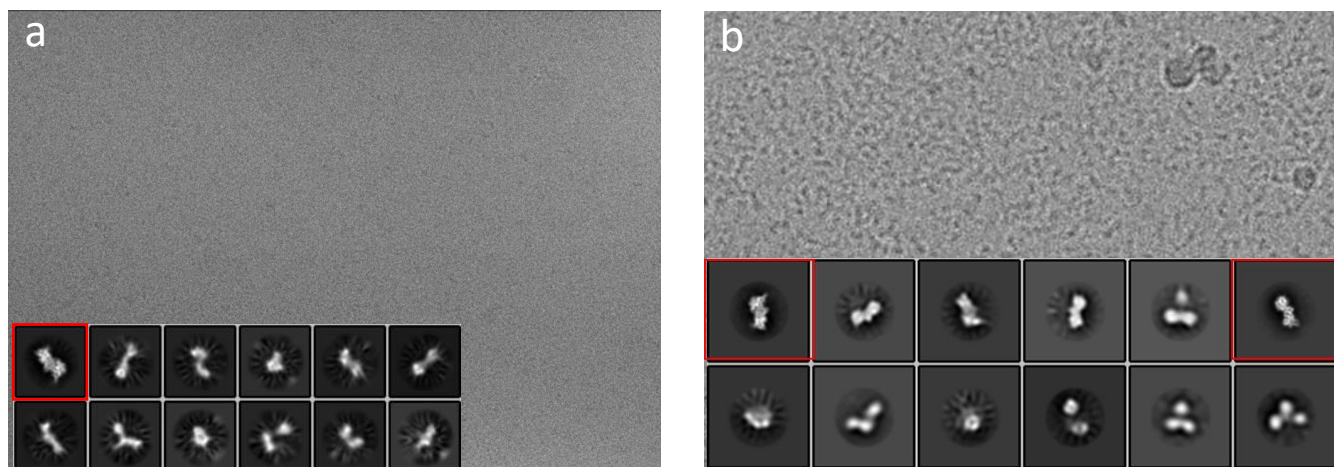


Fig. 2. Cryo-EM of PARP1-DNA-HPF1 by (a) Vitrobot (a) and (b) Chameleon with 500 ms plunge speed. Note the most prominent class with secondary structure features of the PARP1-HPF1 fragment (top-left red boxes). A faster plunge speed resulted in a second view of the fragment.

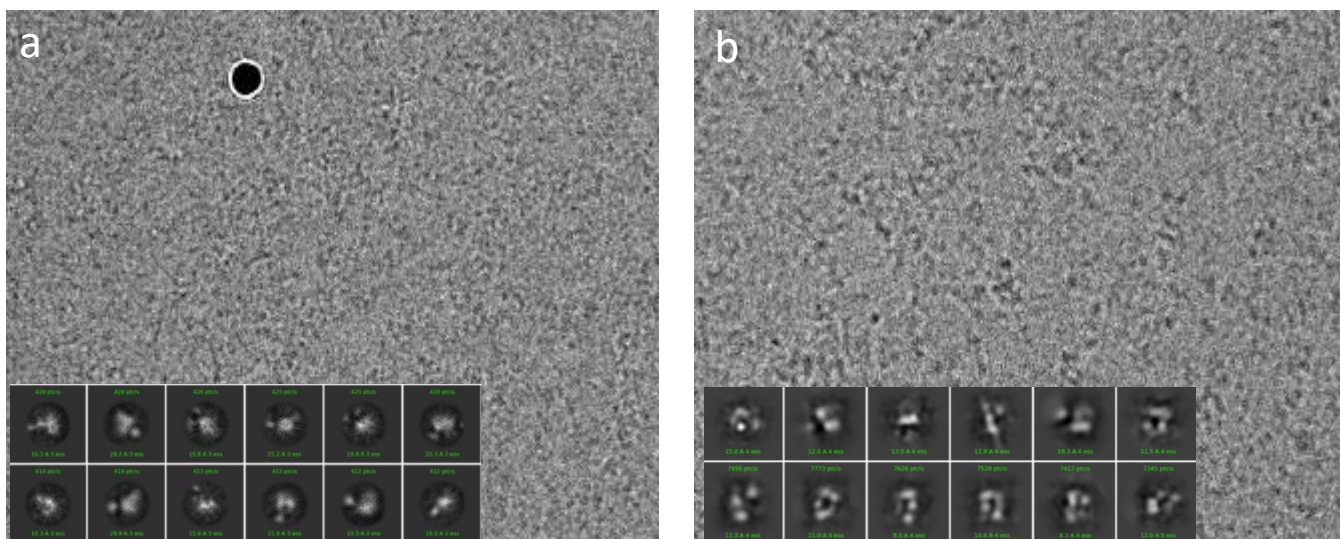


Fig. 3. Cryo-EM using Graphene solid support. (a) PARP1-DNA on Graphene vitrified with a Vitrobot. (b) The PARP1-DNA-HPF1 complex was crosslinked prior to application on to the Vitrobot. Preliminary analyses show particles of the expected size.