

Figures/Preliminary results

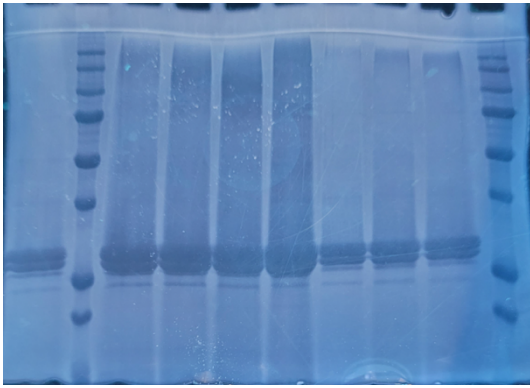


Figure 1: SDS-PAGE of His tag elution profile of TraE reconstituted into amphipol visualized with zinc imidazole incubation at 4°C; coloration after 1 month incubation at 4°C

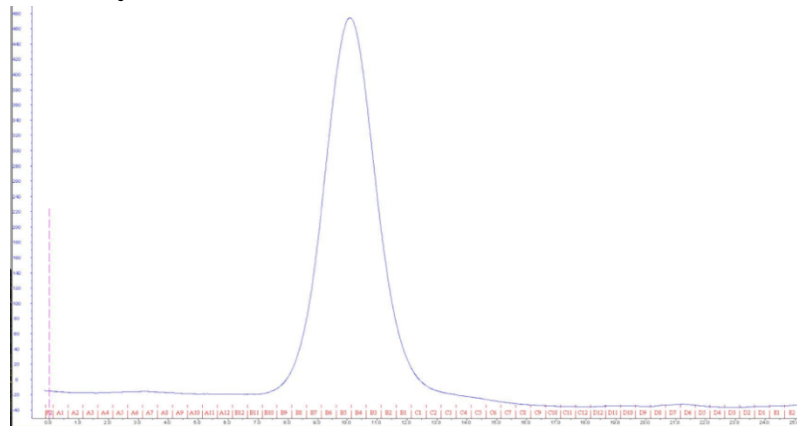


Figure 2: TraE reconstituted into amphipol; SEC profile after 1 month at 4°C

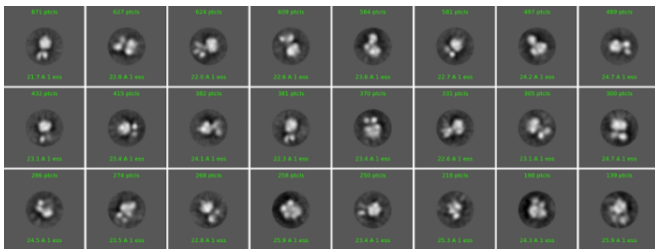


Figure 3: TraE reconstituted into amphipol, 2D classification, negative staining

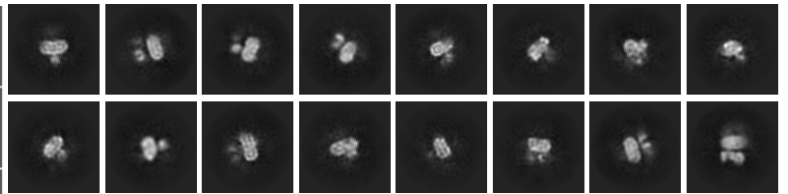


Figure 4: TraE reconstituted into amphipol, cryo-EM 2D classification

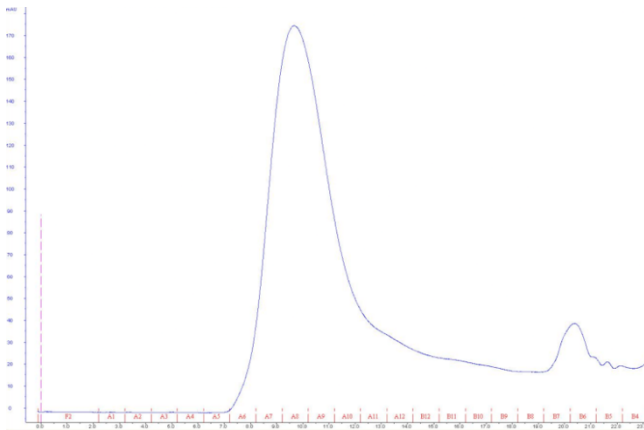


Figure 5: TraE reconstituted into nanodisc SEC profile

Note that similar preliminary data are available for the TraD protein.

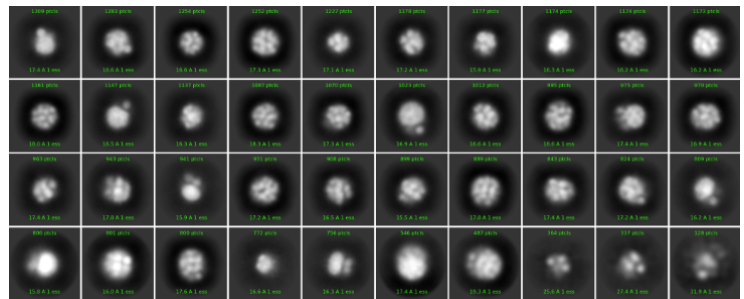


Figure 6: TraE reconstituted into nanodisc, 2D classification negative staining

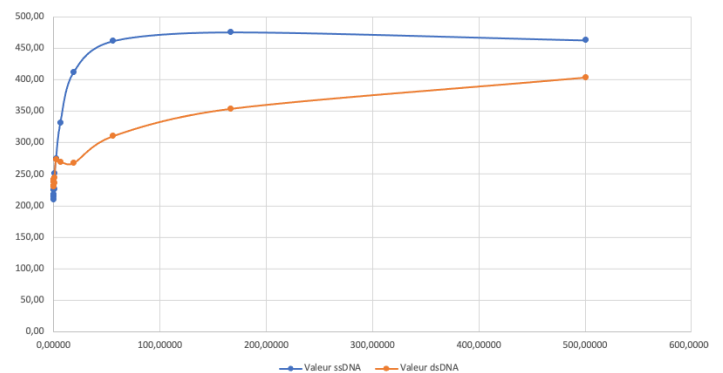


Figure 7: TraE-DNA interaction curve showing a nanomolar range affinity