

Unraveling the Structure, Dynamics, and Regulation of Mechanosensitive Channels

Amedee des Georges and Andres Cabezas. NYU.

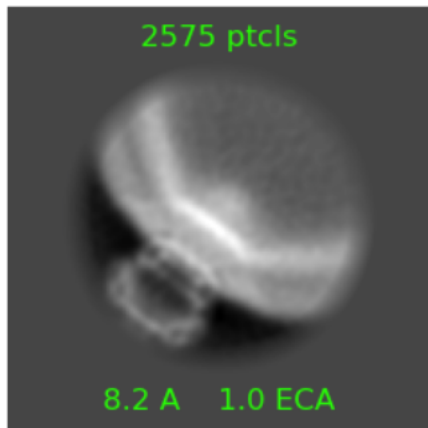


Figure 1: 2D average of MscS reconstituted in liposomes.

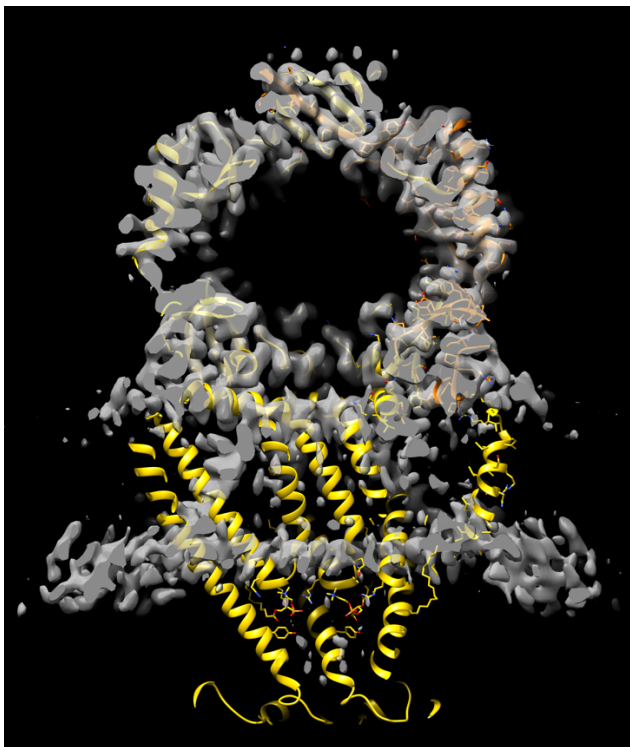


Figure 2. Slice through reconstruction of MscS embedded in liposome, with PDB model of closed state reconstituted in nanodisc fitted into it. Note that the TM regions of model and map show different conformations.