

Figure 1. High-resolution cryo-EM structure of human connexin 26 overexpressed in SF9 cells. The results were from the data collected in the previous data collection session NCCAT-RAP1-YG210101.

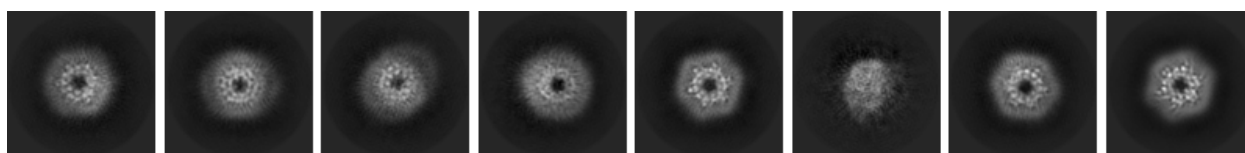


Figure 2. 2D classification of human connexin 26 overexpressed in HEK293 cells

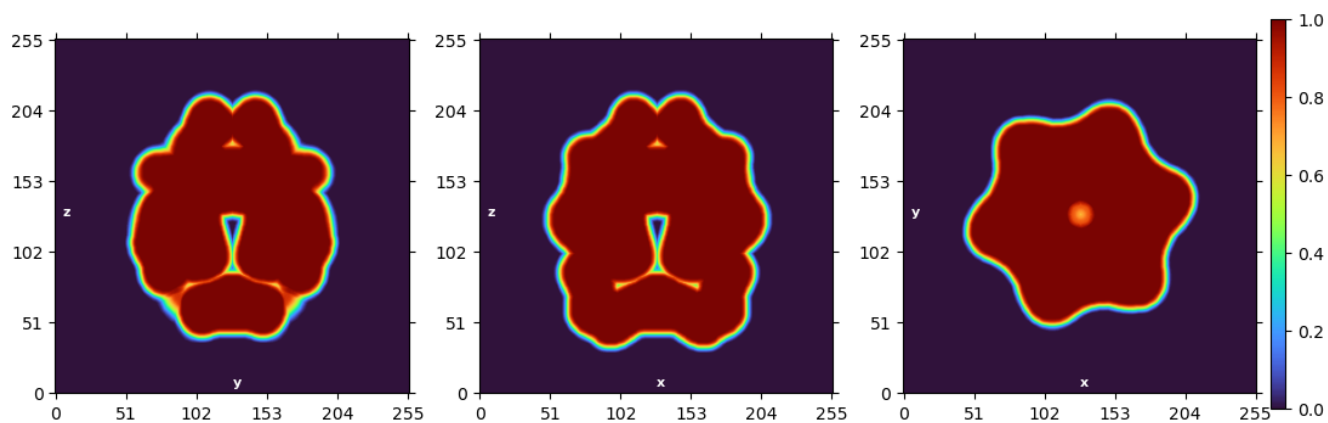


Figure 3. Sliced view of the cryo-EM density of hemi channel of human connexin 26 overexpressed in HEK293 cell.