

Figure 1: Initial data acquisition of the Microtubule, Survivin, and TPI Complex. (A) SDS-PAGE showing the purity of tubulin, survivin, and TPI. (B) Representative micrograph showing the microtubules (boxed in red) at 63k magnification. (C) Selected 2D classes resulting from the collection of approximately 1000 micrographs.

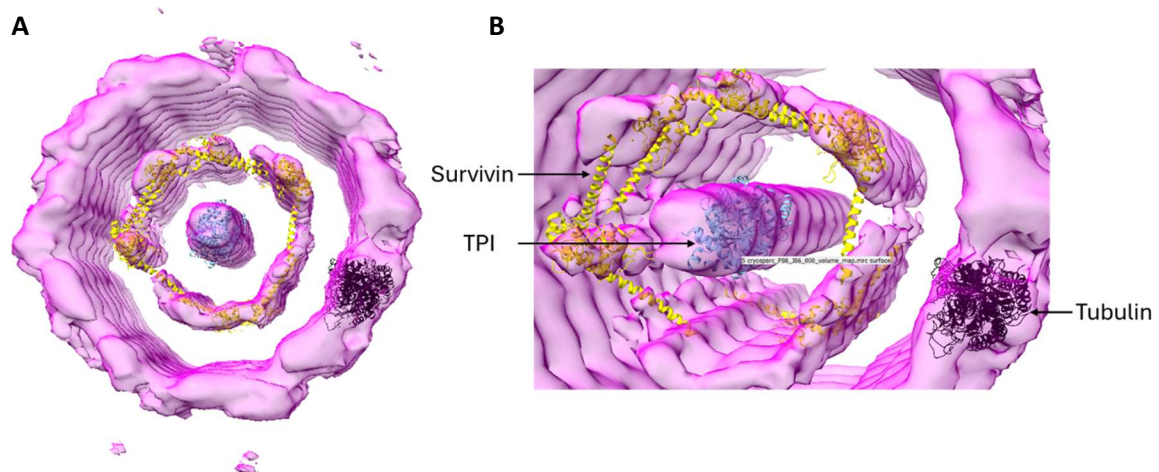


Figure 2: Preliminary 3D Reconstruction. (A) The density resulting from the collection and docking of existing structures of tubulin (black, PDB: 1TUB), survivin (yellow, PDB: 1E31), and TPI (blue, PDB: 6D43). (B) Magnified view, highlighting the fit of TPI and tubulin with a ring of survivin positioned between the two proteins.