

Figure 1

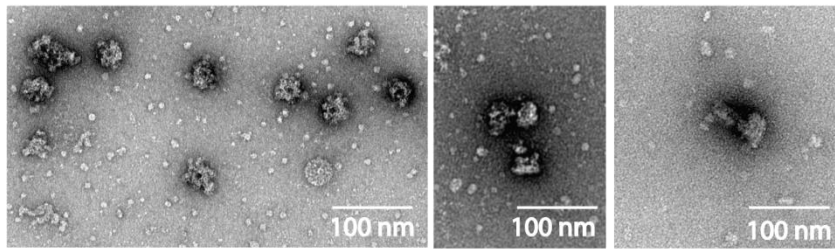


Figure 2

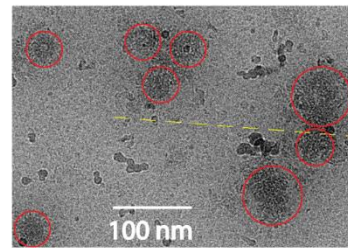


Figure 3

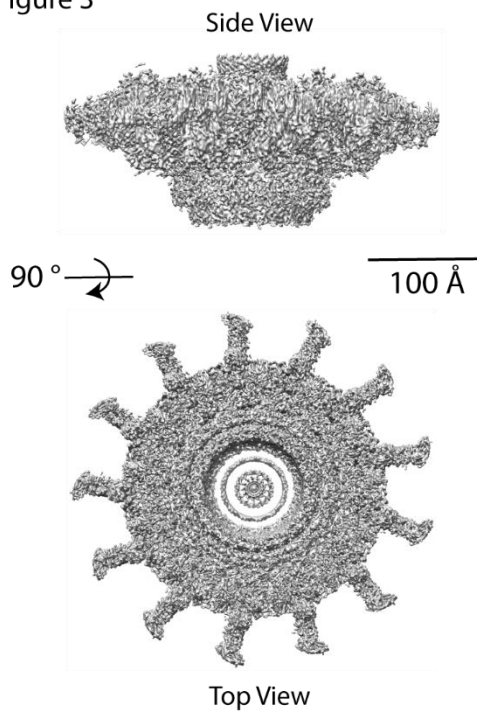
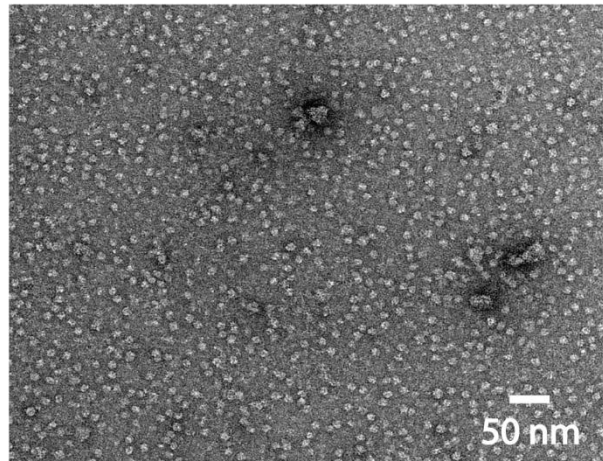


Figure 4



Dot/Icm T4SS preliminary EM characterization.

Figure 1: Negative stain micrographs of Dot/Icm T4SS complexes from new preparation protocols to maintain them intact. Left - top views; Middle - side views; Right - side view of complex with trapped substrate.

Figure 2: CryoEM micrograph showing Dot/Icm T4SS complexes.

Figure 3: 3D reconstruction of complexes isolated using standard protocols in the Durie lab on a Krios 4G (~4 Å resolution).

Figure 4: Negative stain micrograph of inner membrane (DotO+DotB) complex.