

Figure 1. Purification of LAPTH-PTHR-Gs complex and the cryo-EM map of the complex from our previous published study: Zhao et al, Structure and dynamics of the active human parathyroid hormone receptor-1. *Science*, 2019 Apr 12;364(6436):148-153, PMID: 30975883.

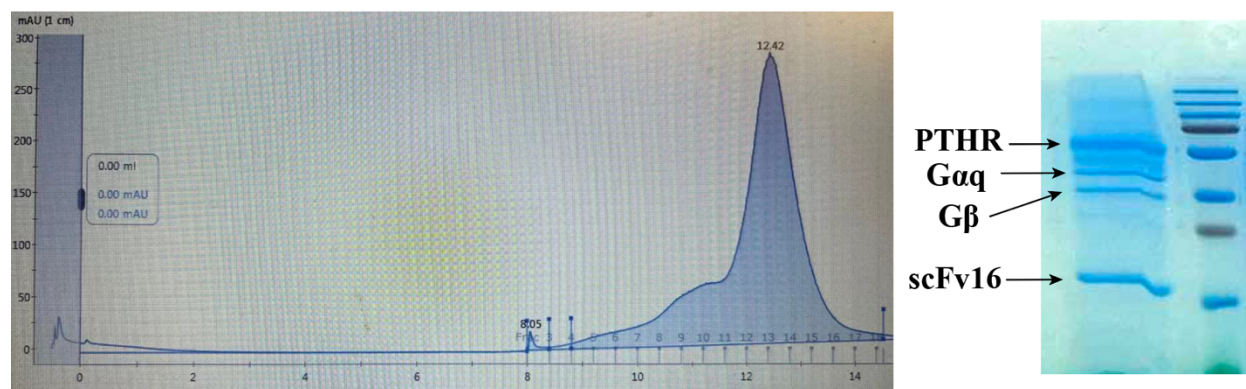


Figure 2. Purification of LAPTH-PTHR-Gq complex. Left: Size exclusion profile. Right: SDS-PAGE of the PTHR-Gq complex with a scFv fragment, scFv16.